

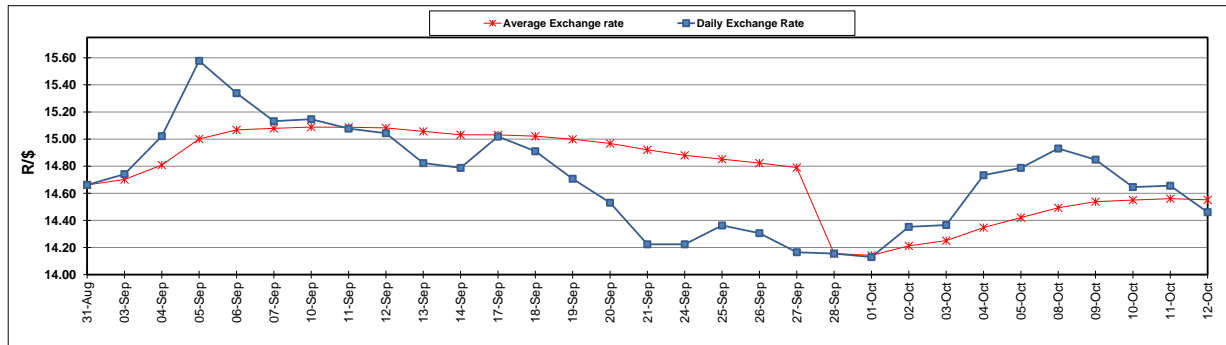
	PETROL 95 ULP	PETROL 93 ULP & LRP	DIESEL 0.05%	DIESEL 0.005%	ILL. PAR.
GAUTENG PUMP PRICE (SA c/l) AS FROM 03/10/2018	1 708.000	1 685.000	-	-	-
WHOLESALE PRICE (SA c/l) AS FROM 03/10/2018	-	-	1 564.830	1 569.230	1 057.088
SINGLE NATIONAL MAXIMUM RETAIL PRICE	-	-	-	-	1 372.000
BASIC FUEL PRICE - 12/10/2018 (SA c/l)	820.421	805.903	899.073	906.785	897.451
PRESS RELEASE CONTRIBUTION TO BFP 03/10/2018 - 12/10/2018 (SA c/l)	851.170	838.170	891.630	896.030	884.128
UNIT OVER/(UNDER) RECOVERY - 12/10/2018 (SA c/l)	30.749	32.267	(7.443)	(10.755)	(13.323)
AVERAGE BASIC FUEL PRICE 28/09/2018 - 12/10/2018	863.456	849.981	924.767	932.014	920.987
AVERAGE UNIT OVER/(UNDER) RECOVERY 28/09/2018 - 12/10/2018	(39.559)	(38.811)	(66.955)	(69.802)	(65.222)

ANALYSIS MOVEMENT OF AVERAGE OVER/(UNDER) RECOVERY

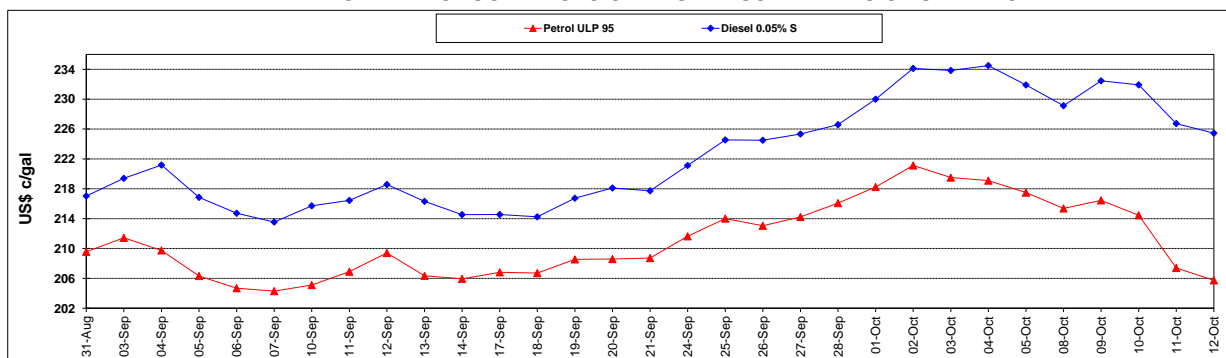
	PETROL 95	PETROL 93	DIESEL 0.05%	DIESEL 0.005%	ILL. PAR.
- MOVEMENT IN INTERNATIONAL PRODUCT PRICES	(53.717)	(52.748)	(82.119)	(85.084)	(80.325)
- MOVEMENT IN EXCHANGE RATE	14.158	13.937	15.164	15.282	15.102
AVERAGE UNIT OVER/(UNDER) RECOVERY 28/09/2018 - 12/10/2018	(39.559)	(38.811)	(66.955)	(69.802)	(65.222)

R/\$ EXCHANGE RATE - (R/\$14.4603 - 12/10/2018)

EXCHANGE RATE USED IN BASIC FUEL PRICE



INTERNATIONAL PRODUCT PRICES OF BASKET USED IN BASIC FUEL PRICE



BASIC FUEL PRICE IN SA CENTS PER LITRE

