

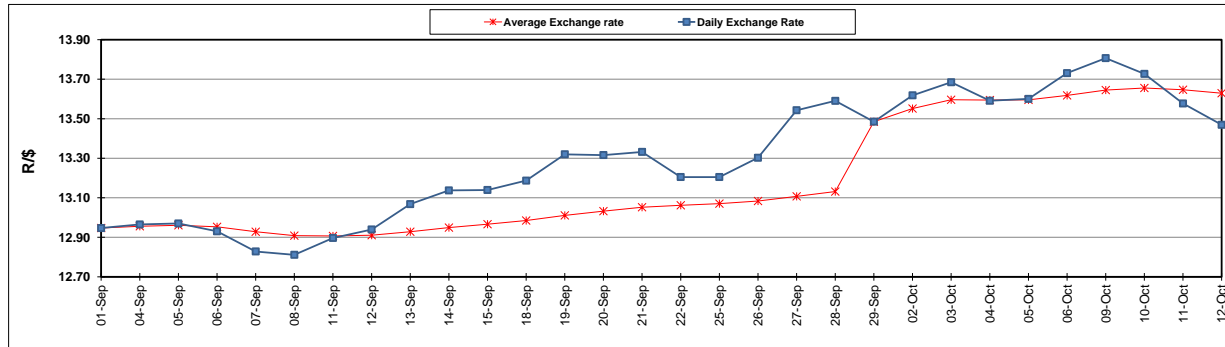
	PETROL 95 ULP	PETROL 93 ULP & LRP	DIESEL 0.05%	DIESEL 0.005%	ILL. PAR.
GAUTENG PUMP PRICE (SA c/l) AS FROM 04/10/2017	1 401.000	1 374.000	-	-	-
WHOLESALE PRICE (SA c/l) AS FROM 04/10/2017	-	-	1 212.330	1 217.730	771.088
SINGLE NATIONAL MAXIMUM RETAIL PRICE	-	-	-	-	992.000
BASIC FUEL PRICE - 12/10/2017 (SA c/l)	603.803	587.516	604.111	613.324	599.220
PRESS RELEASE CONTRIBUTION TO BFP 04/10/2017 - 12/10/2017 (SA c/l)	615.070	598.070	600.630	606.030	600.128
UNIT OVER/(UNDER) RECOVERY (SA c/l) - 12/10/2017	11.267	10.554	(3.481)	(7.294)	0.908
AVERAGE BASIC FUEL PRICE 29/09/2017 - 12/10/2017	609.118	592.777	612.356	622.290	609.092
AVERAGE UNIT OVER/(UNDER) RECOVERY 29/09/2017 - 12/10/2017	(2.748)	(2.207)	(24.326)	(28.860)	(20.664)

ANALYSIS MOVEMENT OF AVERAGE OVER/(UNDER) RECOVERY

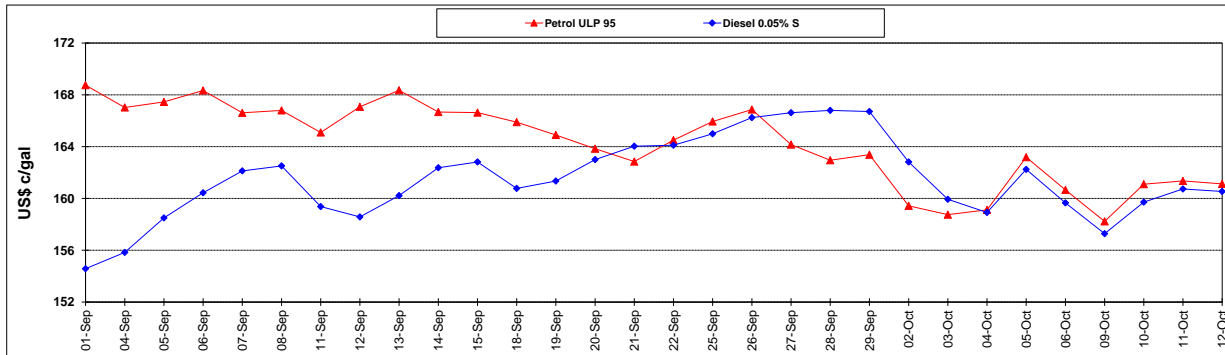
	PETROL 95	PETROL 93	DIESEL 0.05%	DIESEL 0.005%	ILL. PAR.
- MOVEMENT IN INTERNATIONAL PRODUCT PRICES	19.482	19.427	(1.978)	(6.149)	1.565
- MOVEMENT IN EXCHANGE RATE	(22.230)	(21.634)	(22.348)	(22.711)	(22.229)
AVERAGE UNIT OVER/(UNDER) RECOVERY 29/09/2017 - 12/10/2017	(2.748)	(2.207)	(24.326)	(28.860)	(20.664)

R/\$ EXCHANGE RATE - (R/\$ 13.4693 - 12/10/2017)

EXCHANGE RATE USED IN BASIC FUEL PRICE



INTERNATIONAL PRODUCT PRICES OF BASKET USED IN BASIC FUEL PRICE



BASIC FUEL PRICE IN SA CENTS PER LITRE

