

## UPDATE OF THE BASIC FUEL PRICE

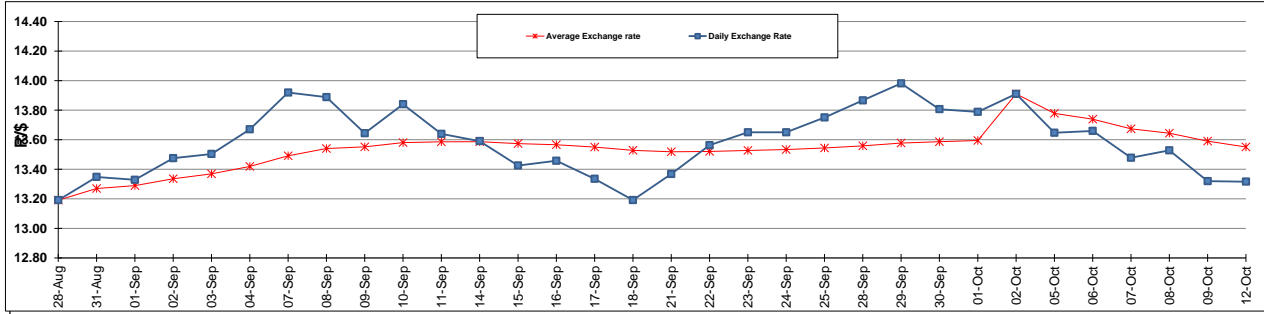
	PETROL 95 ULP	PETROL 93 ULP & LRP	DIESEL 0.05%	DIESEL 0.005%	ILL. PAR.
GAUTENG PUMP PRICE (SA c/l) AS FROM 07/10/2015	1,261.000	1,230.000	-	-	-
WHOLESALE PRICE (SA c/l) AS FROM 07/10/2015	-	-	1,093.970	1,100.370	711.828
SINGLE NATIONAL MAXIMUM RETAIL PRICE	-	-	-	-	914.000
BASIC FUEL PRICE - 12/10/2015 (SA c/l)	576.728	561.024	564.217	570.012	556.490
PRESS RELEASE CONTRIBUTION TO BFP 07/10/2015 - 12/10/2015 (SA c/l)	582.870	561.870	565.630	572.030	554.128
UNIT OVER/(UNDER) RECOVERY (SA c/l) - 12/10/2015	6.142	0.846	1.413	2.018	(2.362)
AVERAGE BASIC FUEL PRICE 02/10/2015 - 12/10/2015	585.684	569.370	571.229	576.442	561.612
AVERAGE UNIT OVER/(UNDER) RECOVERY 02/10/2015 - 12/10/2015	(4.528)	(6.643)	(28.313)	(26.269)	(28.912)

### ANALYSIS MOVEMENT OF AVERAGE OVER/(UNDER) RECOVERY

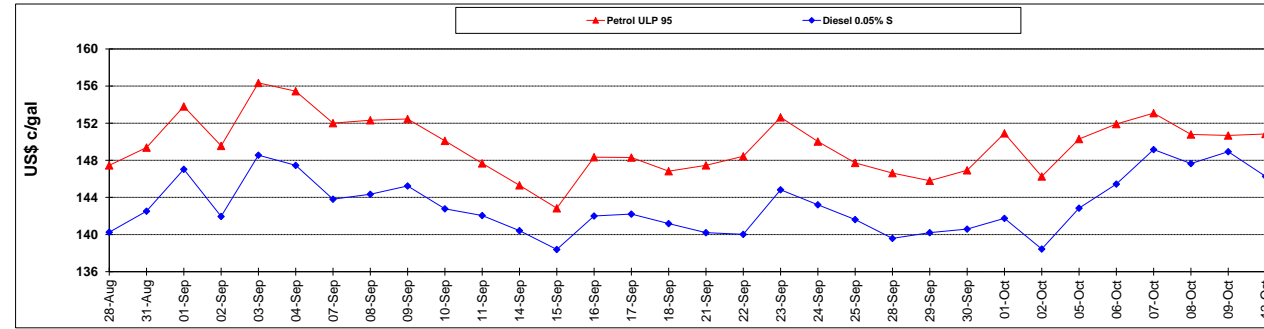
	PETROL 95	PETROL 93	DIESEL 0.05%	DIESEL 0.005%	ILL. PAR.
- MOVEMENT IN INTERNATIONAL PRODUCT PRICES	(6.412)	(8.475)	(30.151)	(28.124)	(30.720)
- MOVEMENT IN EXCHANGE RATE	1.884	1.832	1.838	1.855	1.807
AVERAGE UNIT OVER/(UNDER) RECOVERY 02/10/2015 - 12/10/2015	(4.528)	(6.643)	(28.313)	(26.269)	(28.912)

**R/\$ EXCHANGE RATE - (R/\$ 13.3164 - 12/10/2015)**

### EXCHANGE RATE USED IN BASIC FUEL PRICE



### INTERNATIONAL PRODUCT PRICES OF BASKET USED IN BASIC FUEL PRICE



### BASIC FUEL PRICE IN SA CENTS PER LITRE

