

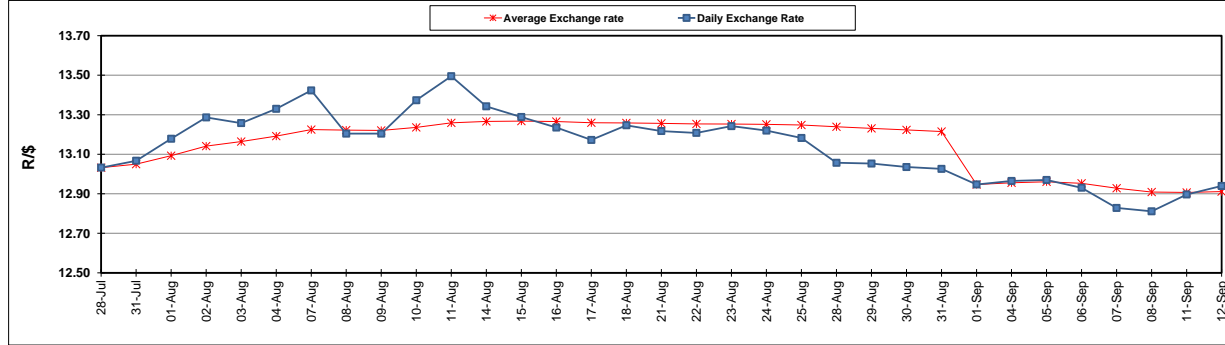
	PETROL 95 ULP	PETROL 93 ULP & LRP	DIESEL 0.05%	DIESEL 0.005%	ILL. PAR.
GAUTENG PUMP PRICE (SA c/l) AS FROM 06/09/2017	1 372.000	1 349.000	-	-	-
WHOLESALE PRICE (SA c/l) AS FROM 06/09/2017	-	-	1 170.330	1 175.730	732.088
SINGLE NATIONAL MAXIMUM RETAIL PRICE	-	-	-	-	941.000
BASIC FUEL PRICE - 12/09/2017 (SA c/l)	601.455	583.886	574.635	579.994	569.817
PRESS RELEASE CONTRIBUTION TO BFP 06/09/2017 - 12/09/2017 (SA c/l)	586.070	573.070	558.630	564.030	561.128
UNIT OVER/(UNDER) RECOVERY (SA c/l) - 12/09/2017	(15.385)	(10.816)	(16.005)	(15.964)	(8.689)
AVERAGE BASIC FUEL PRICE 01/09/2017 - 12/09/2017	600.394	583.843	574.795	580.474	572.346
AVERAGE UNIT OVER/(UNDER) RECOVERY 01/09/2017- 12/09/2017	(37.724)	(34.173)	(32.665)	(32.944)	(29.593)

### ANALYSIS MOVEMENT OF AVERAGE OVER/(UNDER) RECOVERY

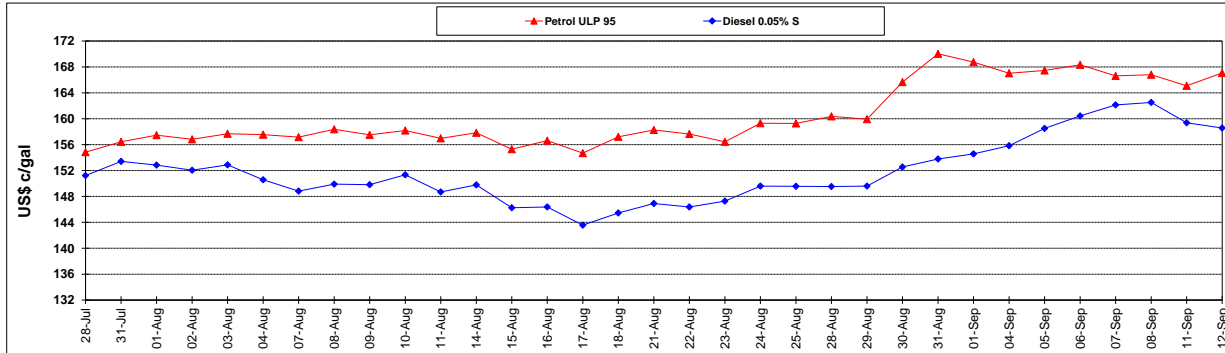
	PETROL 95	PETROL 93	DIESEL 0.05%	DIESEL 0.005%	ILL. PAR.
- MOVEMENT IN INTERNATIONAL PRODUCT PRICES	(51.870)	(47.929)	(46.208)	(46.621)	(43.078)
- MOVEMENT IN EXCHANGE RATE	14.146	13.756	13.543	13.677	13.485
AVERAGE UNIT OVER/(UNDER) RECOVERY 01/09/2017 - 12/09/2017	(37.724)	(34.173)	(32.665)	(32.944)	(29.593)

**R/\$ EXCHANGE RATE - (R/\$12.9395 - 12/09/2017)**

### EXCHANGE RATE USED IN BASIC FUEL PRICE



### INTERNATIONAL PRODUCT PRICES OF BASKET USED IN BASIC FUEL PRICE



### BASIC FUEL PRICE IN SA CENTS PER LITRE

