

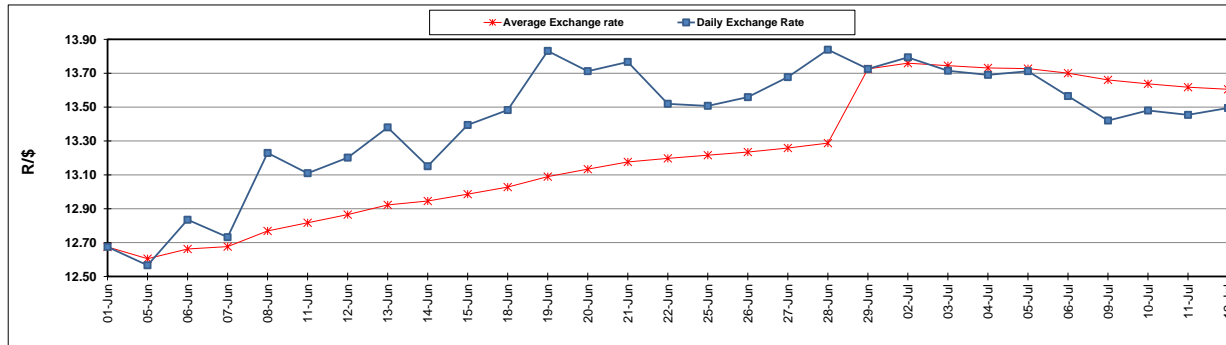
	PETROL 95 ULP	PETROL 93 ULP & LRP	DIESEL 0.05%	DIESEL 0.005%	ILL. PAR.
GAUTENG PUMP PRICE (SA c/l) AS FROM 04/07/2018	1 602.000	1 581.000	-	-	-
WHOLESALE PRICE (SA c/l) AS FROM 04/07/2018	-	-	1 444.830	1 449.230	949.088
SINGLE NATIONAL MAXIMUM RETAIL PRICE	-	-	-	-	1 228.000
BASIC FUEL PRICE - 12/07/2018 (SA c/l)	735.018	726.431	750.025	755.217	765.044
PRESS RELEASE CONTRIBUTION TO BFP 04/07/2018 - 12/07/2018 (SA c/l)	750.070	739.070	771.630	776.030	776.128
UNIT OVER/(UNDER) RECOVERY - 12/07/2018 (SA c/l)	15.052	12.639	21.605	20.813	11.084
AVERAGE BASIC FUEL PRICE 29/06/2018 - 12/07/2018	764.068	753.787	780.810	785.871	795.506
AVERAGE UNIT OVER/(UNDER) RECOVERY 29/06/2018 - 12/07/2018	(20.898)	(22.817)	(16.980)	(17.041)	(25.978)

### ANALYSIS MOVEMENT OF AVERAGE OVER/(UNDER) RECOVERY

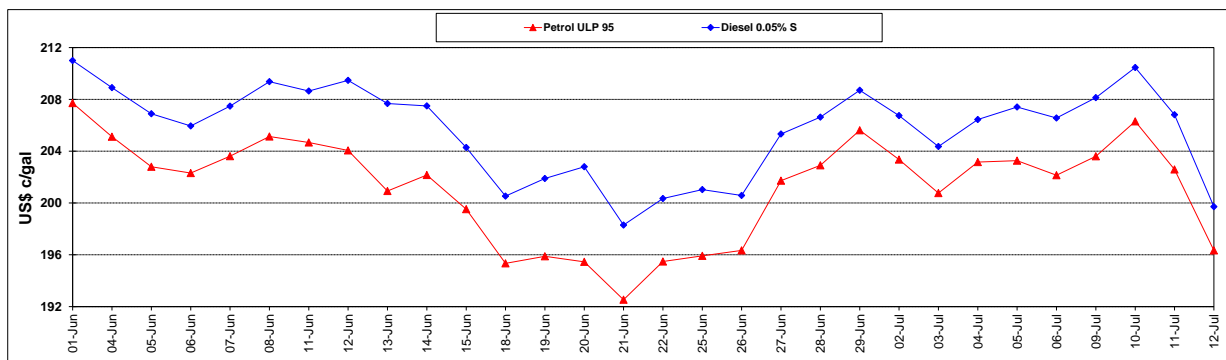
	PETROL 95	PETROL 93	DIESEL 0.05%	DIESEL 0.005%	ILL. PAR.
- MOVEMENT IN INTERNATIONAL PRODUCT PRICES	(3.044)	(5.204)	1.265	1.322	(7.390)
- MOVEMENT IN EXCHANGE RATE	(17.854)	(17.613)	(18.245)	(18.363)	(18.588)
AVERAGE UNIT OVER/(UNDER) RECOVERY 29/06/2018 - 12/07/2018	(20.898)	(22.817)	(16.980)	(17.041)	(25.978)

### R/\$ EXCHANGE RATE - (R/\$13.4945 - 12/07/2018)

#### EXCHANGE RATE USED IN BASIC FUEL PRICE



#### INTERNATIONAL PRODUCT PRICES OF BASKET USED IN BASIC FUEL PRICE



#### BASIC FUEL PRICE IN SA CENTS PER LITRE

