

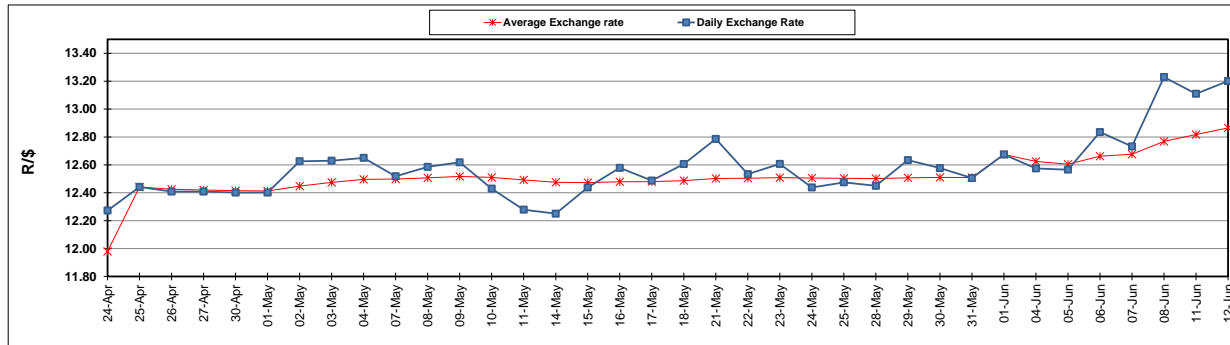
	PETROL 95 ULP	PETROL 93 ULP & LRP	DIESEL 0.05%	DIESEL 0.005%	ILL. PAR.
GAUTENG PUMP PRICE (SA c/l) AS FROM 06/06/2018	1 579.000	1 554.000	-	-	-
WHOLESALE PRICE (SA c/l) AS FROM 06/06/2018	-	-	1 418.830	1 425.230	927.088
SINGLE NATIONAL MAXIMUM RETAIL PRICE	-	-	-	-	1 198.000
BASIC FUEL PRICE - 12/06/2018 (SA c/l)	746.813	735.066	768.697	772.364	770.480
PRESS RELEASE CONTRIBUTION TO BFP 06/06/2018 - 12/06/2018 (SA c/l)	727.070	712.070	745.630	752.030	754.128
UNIT OVER/(UNDER) RECOVERY - 12/06/2018 (SA c/l)	(19.743)	(22.996)	(23.067)	(20.334)	(16.352)
AVERAGE BASIC FUEL PRICE 01/06/2018 - 12/06/2018	729.285	716.926	745.921	750.110	747.979
AVERAGE UNIT OVER/(UNDER) RECOVERY 01/06/2018 - 12/06/2018	(32.965)	(35.606)	(32.166)	(30.705)	(24.601)

ANALYSIS MOVEMENT OF AVERAGE OVER/(UNDER) RECOVERY

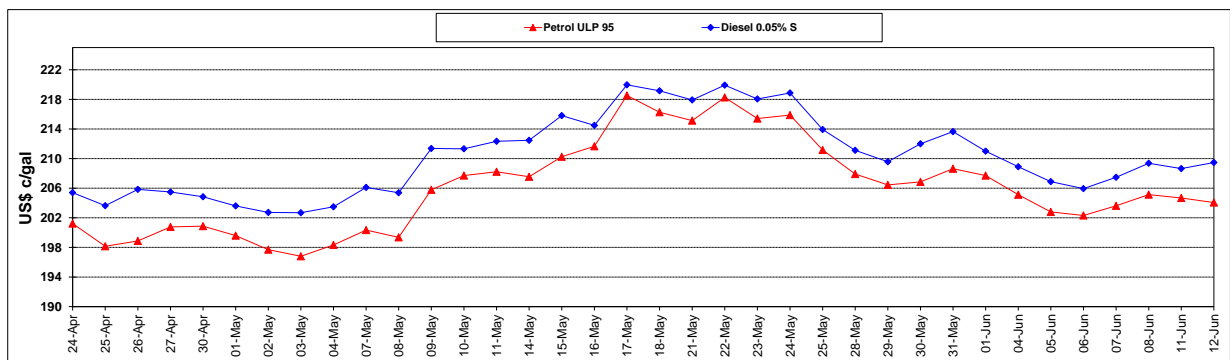
	PETROL 95	PETROL 93	DIESEL 0.05%	DIESEL 0.005%	ILL. PAR.
- MOVEMENT IN INTERNATIONAL PRODUCT PRICES	(12.819)	(15.801)	(11.560)	(9.983)	(3.938)
- MOVEMENT IN EXCHANGE RATE	(20.146)	(19.805)	(20.606)	(20.722)	(20.663)
AVERAGE UNIT OVER/(UNDER) RECOVERY 01/06/2018 - 12/06/2018	(32.965)	(35.606)	(32.166)	(30.705)	(24.601)

R/\$ EXCHANGE RATE - (R/\$13.2013 - 12/06/2018)

EXCHANGE RATE USED IN BASIC FUEL PRICE



INTERNATIONAL PRODUCT PRICES OF BASKET USED IN BASIC FUEL PRICE



BASIC FUEL PRICE IN SA CENTS PER LITRE

