

UPDATE OF THE BASIC FUEL PRICE

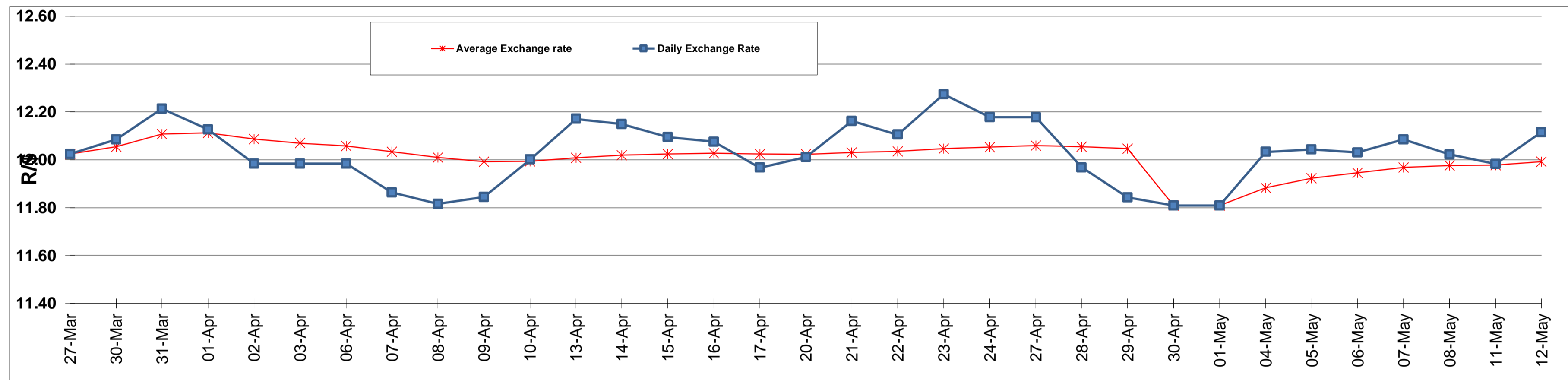
	PETROL 95 ULP	PETROL 93 ULP & LRP	DIESEL 0.05%	DIESEL 0.005%	ILL. PAR.
GAUTENG PUMP PRICE (SA c/l) AS FROM 07/05/2015	1,289.000	1,261.000	-	-	-
WHOLESALE PRICE (SA c/l) AS FROM 07/05/2015	-	-	1,122.790	1,129.190	743.828
SINGLE NATIONAL MAXIMUM RETAIL PRICE	-	-	-	-	957.000
BASIC FUEL PRICE - 12/05/2015 (SA c/l)	670.148	657.085	656.192	658.918	637.107
PRESS RELEASE CONTRIBUTION TO BFP 06/05/2015 - 12/05/2015 (SA c/l)	615.650	597.650	589.630	596.030	581.128
UNIT OVER/(UNDER) RECOVERY (SA c/l) - 12/05/2015	(54.498)	(59.435)	(66.562)	(62.888)	(55.979)
AVERAGE BASIC FUEL PRICE 30/04/2015 - 12/05/2015	661.980	648.115	645.052	647.955	631.622
AVERAGE UNIT OVER/(UNDER) RECOVERY 30/04/2015 - 12/05/2015	(46.330)	(50.465)	(53.200)	(49.703)	(48.272)

ANALYSIS MOVEMENT OF AVERAGE OVER/(UNDER) RECOVERY

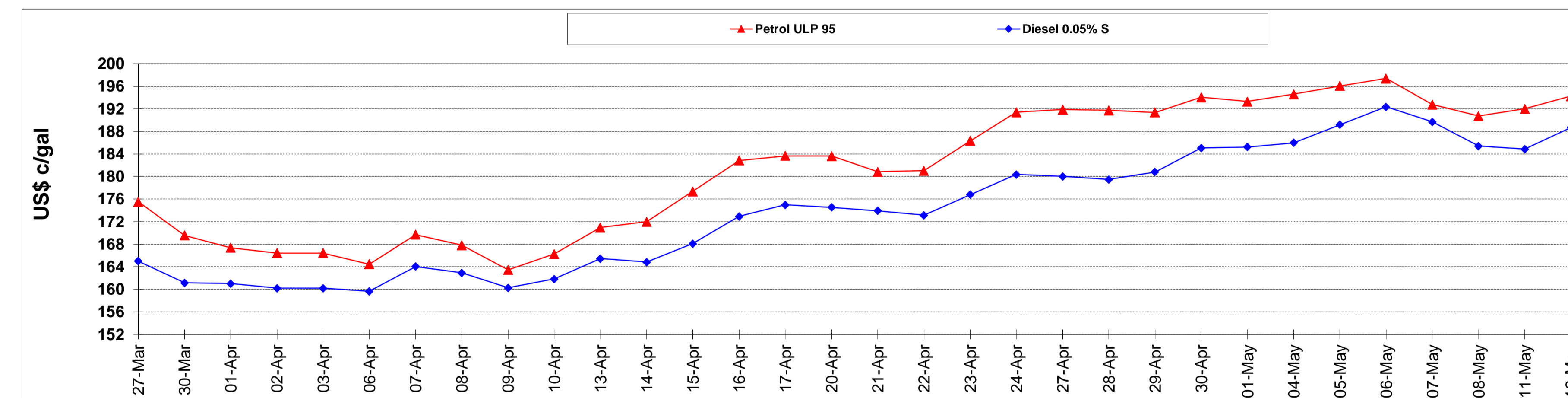
	PETROL 95	PETROL 93	DIESEL 0.05%	DIESEL 0.005%	ILL. PAR.
- MOVEMENT IN INTERNATIONAL PRODUCT PRICES	(49.294)	(53.367)	(56.088)	(52.604)	(51.100)
- MOVEMENT IN EXCHANGE RATE	2.964	2.902	2.888	2.901	2.828
AVERAGE UNIT OVER/(UNDER) RECOVERY 30/04/2015 - 12/05/2015	(46.330)	(50.465)	(53.200)	(49.703)	(48.272)

R/\$ EXCHANGE RATE - (R/\$ 12.1153 - 12/05/2015)

EXCHANGE RATE USED IN BASIC FUEL PRICE



INTERNATIONAL PRODUCT PRICES OF BASKET USED IN BASIC FUEL PRICE



BASIC FUEL PRICE IN SA CENTS PER LITRE

