

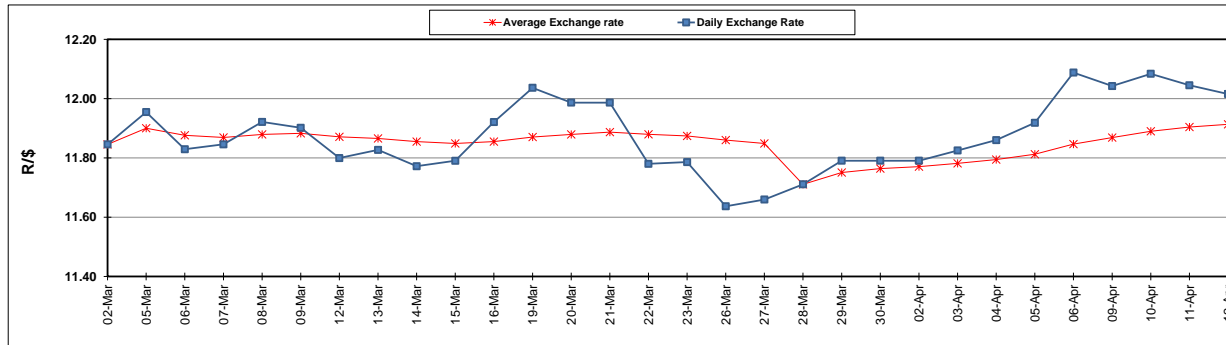
	PETROL 95 ULP	PETROL 93 ULP & LRP	DIESEL 0.05%	DIESEL 0.005%	ILL. PAR.
GAUTENG PUMP PRICE (SA c/l) AS FROM 07/03/2018	1 448.000	1 423.000	-	-	-
WHOLESALE PRICE (SA c/l) AS FROM 07/03/2018	-	-	1 274.830	1 280.230	793.088
SINGLE NATIONAL MAXIMUM RETAIL PRICE	-	-	-	-	1 026.000
BASIC FUEL PRICE - 12/04/2018 (SA c/l)	654.238	636.872	672.849	677.970	688.020
PRESS RELEASE CONTRIBUTION TO BFP 04/04/2018 - 12/04/2018 (SA c/l)	596.070	581.070	601.630	607.030	620.128
UNIT OVER/(UNDER) RECOVERY - 12/04/2018 (SA c/l)	(58.168)	(55.802)	(71.219)	(70.940)	(67.892)
AVERAGE BASIC FUEL PRICE 28/03/2018 - 12/04/2018	631.564	616.431	645.803	651.006	657.462
AVERAGE UNIT OVER/(UNDER) RECOVERY 28/03/2018 - 12/04/2018	(39.619)	(38.236)	(45.423)	(45.226)	(35.251)

ANALYSIS MOVEMENT OF AVERAGE OVER/(UNDER) RECOVERY

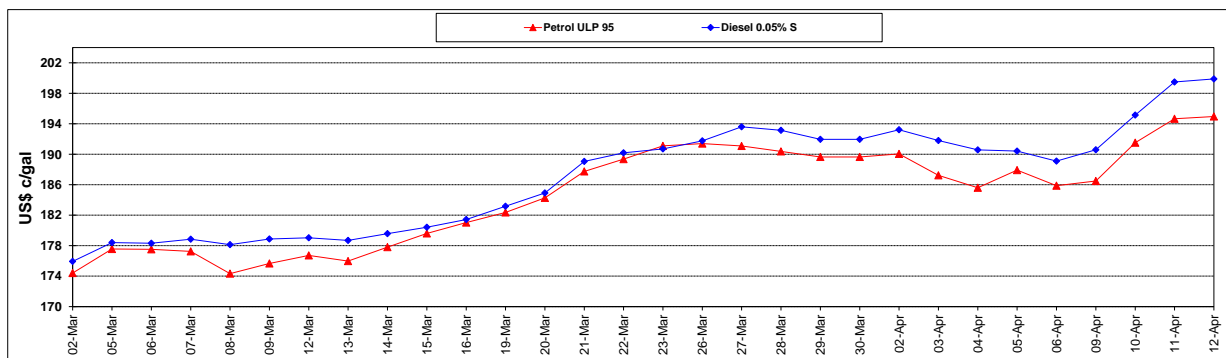
	PETROL 95	PETROL 93	DIESEL 0.05%	DIESEL 0.005%	ILL. PAR.
- MOVEMENT IN INTERNATIONAL PRODUCT PRICES	(36.200)	(34.899)	(41.927)	(41.701)	(31.691)
- MOVEMENT IN EXCHANGE RATE	(3.419)	(3.337)	(3.496)	(3.525)	(3.560)
AVERAGE UNIT OVER/(UNDER) RECOVERY 28/03/2018 - 12/04/2018	(39.619)	(38.236)	(45.423)	(45.226)	(35.251)

R/\$ EXCHANGE RATE - (R/\$12.0155 - 12/04/2018)

EXCHANGE RATE USED IN BASIC FUEL PRICE



INTERNATIONAL PRODUCT PRICES OF BASKET USED IN BASIC FUEL PRICE



BASIC FUEL PRICE IN SA CENTS PER LITRE

