

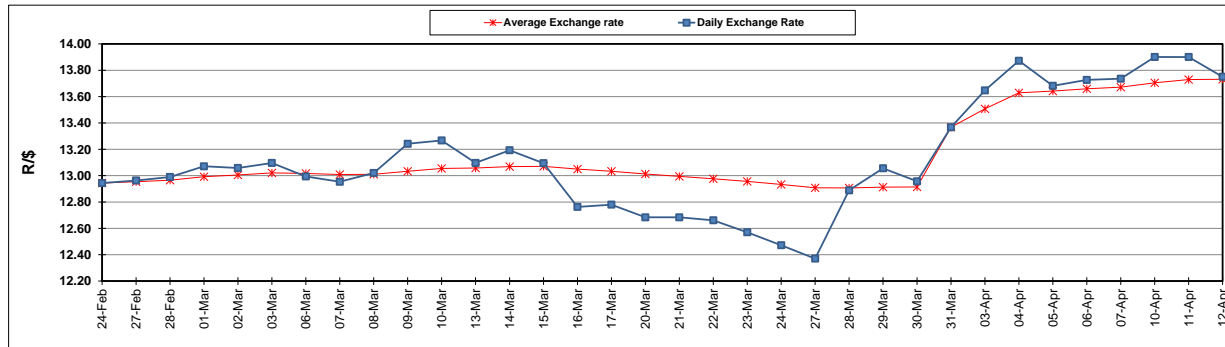
	PETROL 95 ULP	PETROL 93 ULP & LRP	DIESEL 0.05%	DIESEL 0.005%	ILL. PAR.
GAUTENG PUMP PRICE (SA c/l) AS FROM 05/04/2017	1 330.000	1 308.000	-	-	-
WHOLESALE PRICE (SA c/l) AS FROM 05/04/2017	-	-	1 150.330	1 152.730	702.088
SINGLE NATIONAL MAXIMUM RETAIL PRICE	-	-	-	-	901.000
BASIC FUEL PRICE - 12/04/2017 (SA c/l)	634.461	620.082	607.252	611.156	602.862
PRESS RELEASE CONTRIBUTION TO BFP 05/04/2017 - 12/04/2017 (SA c/l)	548.670	536.670	538.630	541.030	531.128
UNIT OVER/(UNDER) RECOVERY (SA c/l) - 12/04/2017	(85.791)	(83.412)	(68.622)	(70.126)	(71.734)
AVERAGE BASIC FUEL PRICE 31/03/2017 - 12/04/2017	618.913	602.057	586.281	590.297	584.134
AVERAGE UNIT OVER/(UNDER) RECOVERY 31/03/2017- 12/04/2017	(48.843)	(44.654)	(30.984)	(32.601)	(35.673)

ANALYSIS MOVEMENT OF AVERAGE OVER/(UNDER) RECOVERY

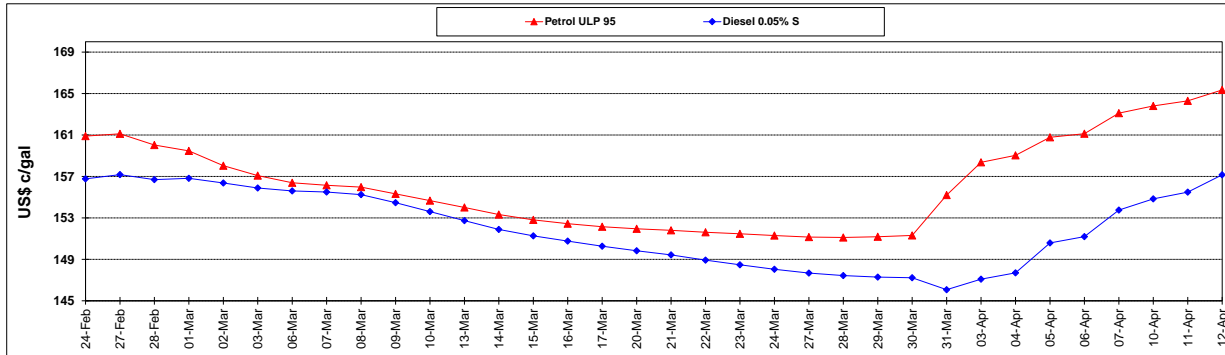
	PETROL 95	PETROL 93	DIESEL 0.05%	DIESEL 0.005%	ILL. PAR.
- MOVEMENT IN INTERNATIONAL PRODUCT PRICES	(12.028)	(8.842)	3.890	2.513	(0.927)
- MOVEMENT IN EXCHANGE RATE	(36.815)	(35.812)	(34.874)	(35.113)	(34.746)
AVERAGE UNIT OVER/(UNDER) RECOVERY 31/03/2017 - 12/04/2017	(48.843)	(44.654)	(30.984)	(32.601)	(35.673)

R/\$ EXCHANGE RATE - (R/\$ 13.7503 - 12/04/2017)

EXCHANGE RATE USED IN BASIC FUEL PRICE



INTERNATIONAL PRODUCT PRICES OF BASKET USED IN BASIC FUEL PRICE



BASIC FUEL PRICE IN SA CENTS PER LITRE

