

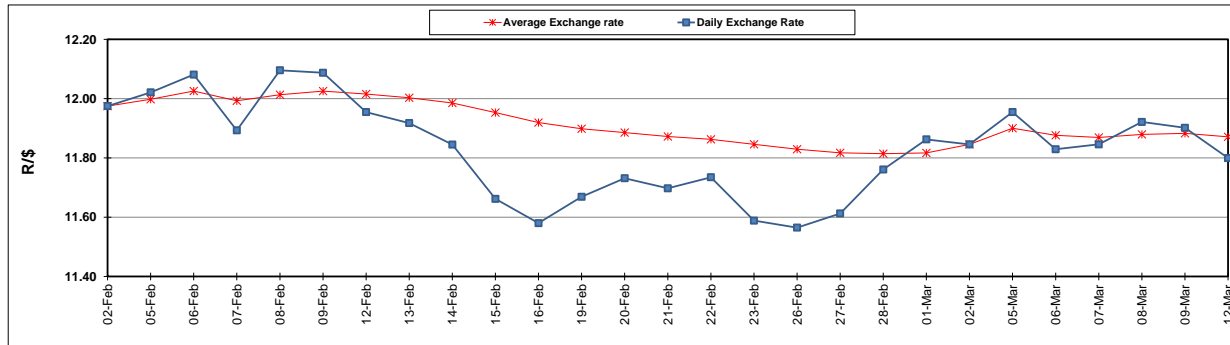
	PETROL 95 ULP	PETROL 93 ULP & LRP	DIESEL 0.05%	DIESEL 0.005%	ILL. PAR.
GAUTENG PUMP PRICE (SA c/l) AS FROM 07/03/2018	1 376.000	1 354.000	-	-	-
WHOLESALE PRICE (SA c/l) AS FROM 07/03/2018	-	-	1 209.630	1 215.030	795.388
SINGLE NATIONAL MAXIMUM RETAIL PRICE	-	-	-	-	1 026.000
BASIC FUEL PRICE - 12/03/2018 (SA c/l)	585.793	571.763	595.792	600.238	609.410
PRESS RELEASE CONTRIBUTION TO BFP 07/03/2018 - 12/03/2018 (SA c/l)	586.170	574.170	598.630	604.030	625.128
UNIT OVER/(UNDER) RECOVERY - 12/03/2018 (SA c/l)	0.377	2.407	2.838	3.792	15.718
AVERAGE BASIC FUEL PRICE 02/03/2018 - 12/03/2018	587.679	574.218	596.798	601.083	623.361
AVERAGE UNIT OVER/(UNDER) RECOVERY 02/03/2018 - 12/03/2018	13.919	15.381	21.975	21.804	11.624

ANALYSIS MOVEMENT OF AVERAGE OVER/(UNDER) RECOVERY

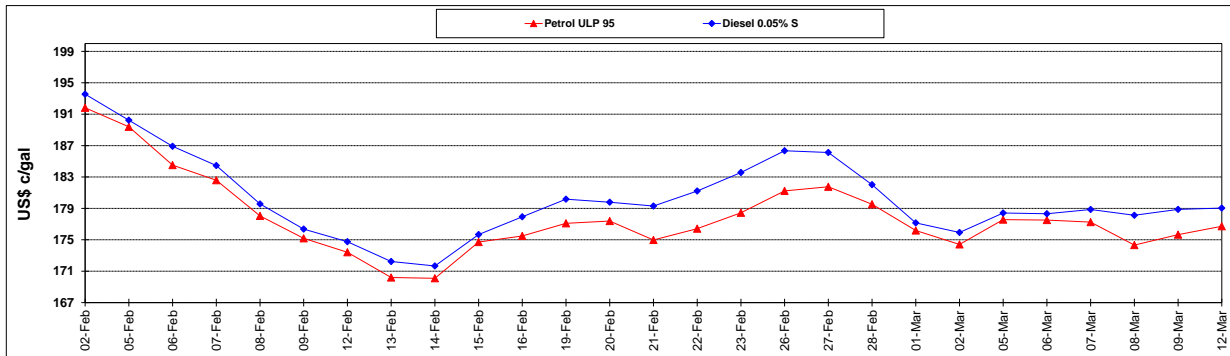
	PETROL 95	PETROL 93	DIESEL 0.05%	DIESEL 0.005%	ILL. PAR.
- MOVEMENT IN INTERNATIONAL PRODUCT PRICES	16.613	18.012	24.710	24.558	14.481
- MOVEMENT IN EXCHANGE RATE	(2.693)	(2.631)	(2.735)	(2.754)	(2.857)
AVERAGE UNIT OVER/(UNDER) RECOVERY 02/03/2018 - 12/03/2018	13.919	15.381	21.975	21.804	11.624

R/\$ EXCHANGE RATE - (R/\$11.7995 - 12/03/2018)

EXCHANGE RATE USED IN BASIC FUEL PRICE



INTERNATIONAL PRODUCT PRICES OF BASKET USED IN BASIC FUEL PRICE



BASIC FUEL PRICE IN SA CENTS PER LITRE

