

UPDATE OF THE BASIC FUEL PRICE

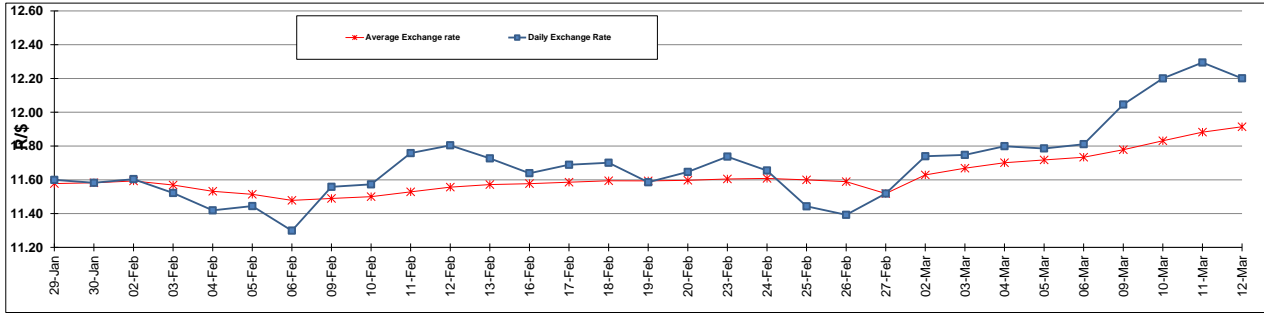
	PETROL 95 ULP	PETROL 93 ULP & LRP	DIESEL 0.05%	DIESEL 0.005%	ILL. PAR.
GAUTENG PUMP PRICE (SA c/l) AS FROM 04/03/2015	1,127.000	1,105.000	-	-	-
WHOLESALE PRICE (SA c/l) AS FROM 04/03/2015	-	-	1,000.090	1,004.490	718.928
SINGLE NATIONAL MAXIMUM RETAIL PRICE	-	-	-	-	931.000
BASIC FUEL PRICE - 12/03/2015 (SA c/l)	609.684	591.124	596.878	601.915	585.408
PRESS RELEASE CONTRIBUTION TO BFP 04/03/2015 - 12/03/2015 (SA c/l)	536.250	524.250	554.630	559.030	564.128
UNIT OVER/(UNDER) RECOVERY (SA c/l) - 12/03/2015	(73.434)	(66.874)	(42.248)	(42.885)	(21.280)
AVERAGE BASIC FUEL PRICE 27/02/2015 - 12/03/2015	608.238	591.188	598.944	603.933	588.108
AVERAGE UNIT OVER/(UNDER) RECOVERY 27/02/2015 - 12/03/2015	(100.788)	(95.738)	(66.514)	(67.103)	(45.880)

ANALYSIS MOVEMENT OF AVERAGE OVER/(UNDER) RECOVERY

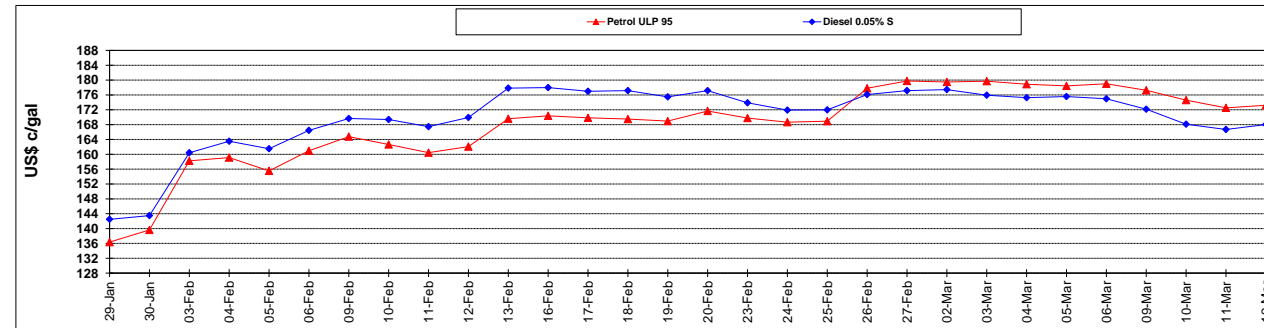
	PETROL 95	PETROL 93	DIESEL 0.05%	DIESEL 0.005%	ILL. PAR.
- MOVEMENT IN INTERNATIONAL PRODUCT PRICES	(84.181)	(79.597)	(50.161)	(50.614)	(29.823)
- MOVEMENT IN EXCHANGE RATE	(16.607)	(16.141)	(16.353)	(16.489)	(16.057)
AVERAGE UNIT OVER/(UNDER) RECOVERY 27/02/2015 - 12/03/2015	(100.788)	(95.738)	(66.514)	(67.103)	(45.880)

R/\$ EXCHANGE RATE - (R/\$ 12.2008 - 12/03/2015)

EXCHANGE RATE USED IN BASIC FUEL PRICE



INTERNATIONAL PRODUCT PRICES OF BASKET USED IN BASIC FUEL PRICE



BASIC FUEL PRICE IN SA CENTS PER LITRE

