

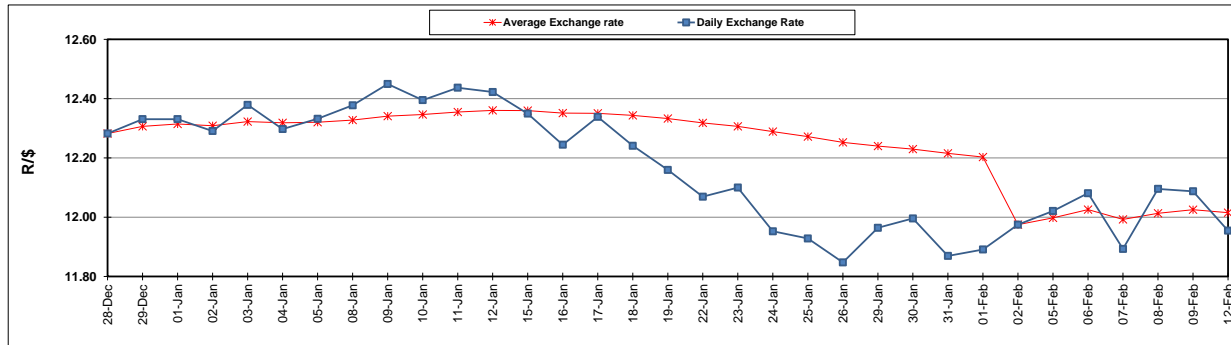
	PETROL 95 ULP	PETROL 93 ULP & LRP	DIESEL 0.05%	DIESEL 0.005%	ILL. PAR.
GAUTENG PUMP PRICE (SA c/l) AS FROM 07/02/2018	1 412.000	1 419.000	-	-	-
WHOLESALE PRICE (SA c/l) AS FROM 07/02/2018	-	-	1 256.630	1 259.030	818.388
SINGLE NATIONAL MAXIMUM RETAIL PRICE	-	-	-	-	1 056.000
BASIC FUEL PRICE - 12/02/2018 (SA c/l)	582.314	567.446	589.354	593.388	610.426
PRESS RELEASE CONTRIBUTION TO BFP 07/02/2018 - 12/02/2018 (SA c/l)	622.170	610.170	645.630	648.030	648.128
UNIT OVER/(UNDER) RECOVERY - 12/02/2018 (SA c/l)	39.856	42.724	56.276	54.642	37.702
AVERAGE BASIC FUEL PRICE 02/02/2018 - 12/02/2018	613.071	598.416	620.820	625.296	639.269
AVERAGE UNIT OVER/(UNDER) RECOVERY 02/02/2018 - 12/02/2018	21.956	24.611	32.096	30.020	17.002

### ANALYSIS MOVEMENT OF AVERAGE OVER/(UNDER) RECOVERY

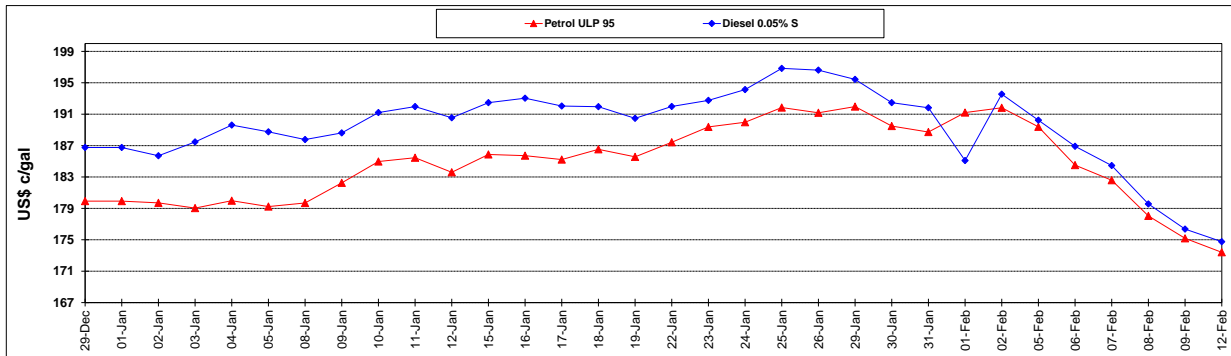
	PETROL 95	PETROL 93	DIESEL 0.05%	DIESEL 0.005%	ILL. PAR.
- MOVEMENT IN INTERNATIONAL PRODUCT PRICES	12.384	15.268	22.403	20.257	7.021
- MOVEMENT IN EXCHANGE RATE	9.572	9.343	9.693	9.763	9.981
AVERAGE UNIT OVER/(UNDER) RECOVERY 02/02/2018 - 12/02/2018	21.956	24.611	32.096	30.020	17.002

### R/\$ EXCHANGE RATE - (R/\$ 11.9545 - 12/02/2018)

#### EXCHANGE RATE USED IN BASIC FUEL PRICE



#### INTERNATIONAL PRODUCT PRICES OF BASKET USED IN BASIC FUEL PRICE



#### BASIC FUEL PRICE IN SA CENTS PER LITRE

