

## UPDATE OF THE BASIC FUEL PRICE

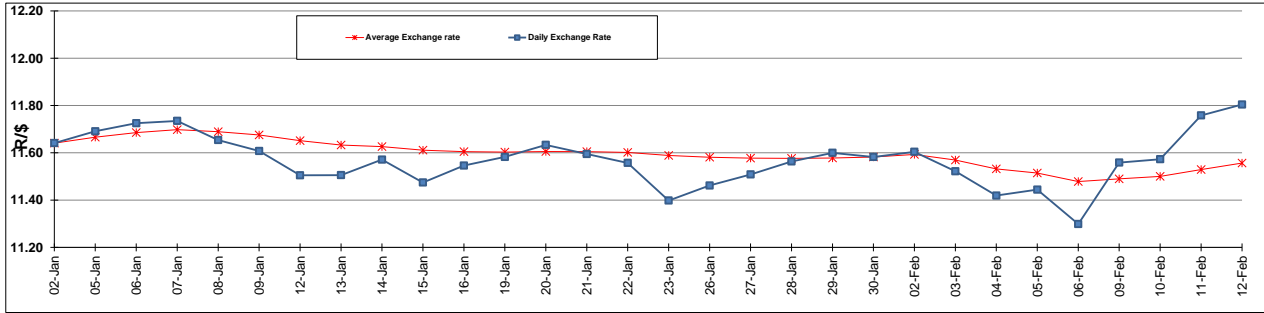
	PETROL 95 ULP	PETROL 93 ULP & LRP	DIESEL 0.05%	DIESEL 0.005%	ILL. PAR.
GAUTENG PUMP PRICE (SA c/l) AS FROM 04/02/2015	1,031.000	1,009.000	-	-	-
WHOLESALE PRICE (SA c/l) AS FROM 04/02/2015	-	-	926.090	930.490	645.928
SINGLE NATIONAL MAXIMUM RETAIL PRICE	-	-	-	-	833.000
BASIC FUEL PRICE - 12/02/2015 (SA c/l)	555.267	539.396	583.757	586.676	591.020
PRESS RELEASE CONTRIBUTION TO BFP 04/02/2015 - 12/02/2015 (SA c/l)	440.250	428.250	480.630	485.030	491.128
UNIT OVER/(UNDER) RECOVERY (SA c/l) - 12/02/2015	(115.017)	(111.146)	(103.127)	(101.646)	(99.892)
AVERAGE BASIC FUEL PRICE 30/01/2015 - 12/02/2015	529.042	512.894	548.308	551.926	562.586
AVERAGE UNIT OVER/(UNDER) RECOVERY 30/01/2015 - 12/02/2015	(60.892)	(56.744)	(37.078)	(36.296)	(40.858)

### ANALYSIS MOVEMENT OF AVERAGE OVER/(UNDER) RECOVERY

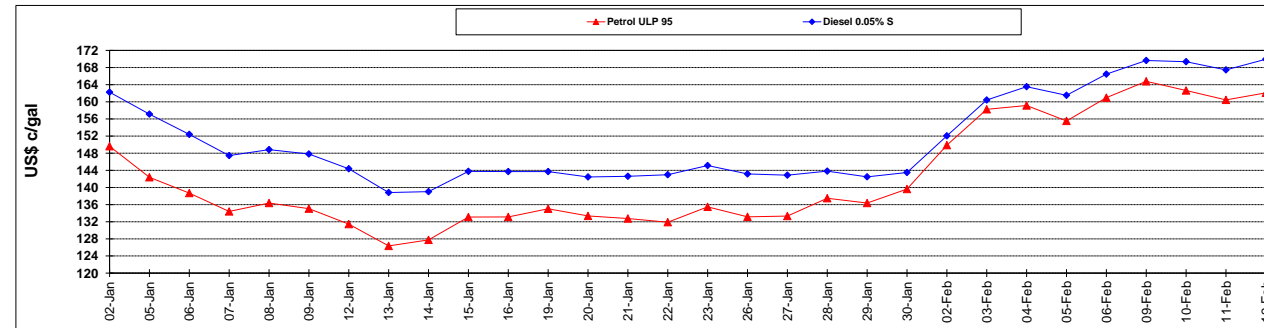
	PETROL 95	PETROL 93	DIESEL 0.05%	DIESEL 0.005%	ILL. PAR.
- MOVEMENT IN INTERNATIONAL PRODUCT PRICES	(61.867)	(57.689)	(38.089)	(37.313)	(41.895)
- MOVEMENT IN EXCHANGE RATE	0.975	0.945	1.011	1.017	1.037
AVERAGE UNIT OVER/(UNDER) RECOVERY 30/01/2015 - 12/02/2015	(60.892)	(56.744)	(37.078)	(36.296)	(40.858)

### R/\$ EXCHANGE RATE - (R/\$ 11.8043 - 12/02/2015)

### EXCHANGE RATE USED IN BASIC FUEL PRICE



### INTERNATIONAL PRODUCT PRICES OF BASKET USED IN BASIC FUEL PRICE



### BASIC FUEL PRICE IN SA CENTS PER LITRE

