

UPDATE OF THE BASIC FUEL PRICE

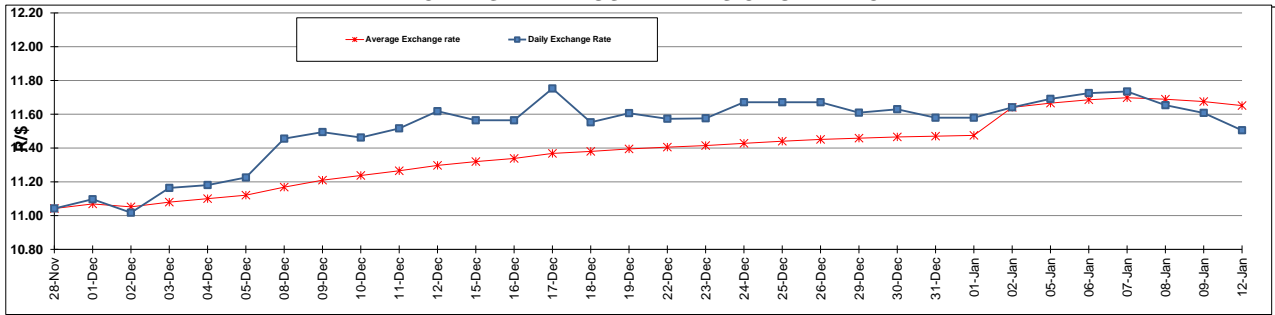
	PETROL 95 ULP	PETROL 93 ULP & LRP	DIESEL 0.05%	DIESEL 0.005%	ILL. PAR.
GAUTENG PUMP PRICE (SA c/l) AS FROM 07/01/2015	1,124.000	1,102.000	-	-	-
WHOLESALE PRICE (SA c/l) AS FROM 07/01/2015	-	-	1,028.090	1,032.490	747.928
SINGLE NATIONAL MAXIMUM RETAIL PRICE	-	-	-	-	969.000
BASIC FUEL PRICE - 12/01/2015 (SA c/l)	446.933	435.203	489.930	493.949	496.583
PRESS RELEASE CONTRIBUTION TO BFP 07/01/2015 - 12/01/2015 (SA c/l)	533.250	521.250	582.630	587.030	593.128
UNIT OVER/(UNDER) RECOVERY (SA c/l) - 12/01/2015	86.317	86.047	92.700	93.081	96.545
AVERAGE BASIC FUEL PRICE 02/01/2015 - 12/01/2015	473.702	461.659	518.115	522.190	523.970
AVERAGE UNIT OVER/(UNDER) RECOVERY 02/01/2015 - 12/01/2015	112.262	114.019	109.086	109.840	115.444

ANALYSIS MOVEMENT OF AVERAGE OVER/(UNDER) RECOVERY

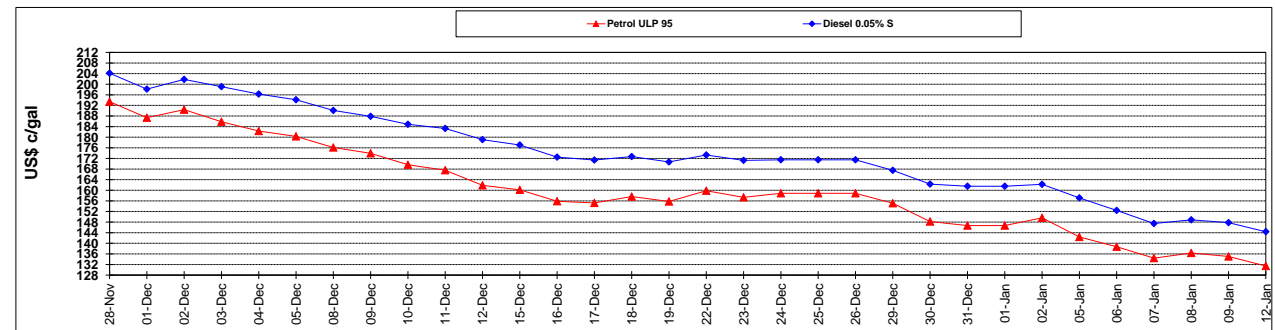
	PETROL 95	PETROL 93	DIESEL 0.05%	DIESEL 0.005%	ILL. PAR.
- MOVEMENT IN INTERNATIONAL PRODUCT PRICES	119.426	121.002	116.921	117.737	123.368
- MOVEMENT IN EXCHANGE RATE	(7.164)	(6.982)	(7.835)	(7.897)	(7.924)
AVERAGE UNIT OVER/(UNDER) RECOVERY 02/01/2015 - 12/01/2015	112.262	114.019	109.086	109.840	115.444

R/\$ EXCHANGE RATE - (R/\$ 11.5048 - 12/01/2015)

EXCHANGE RATE USED IN BASIC FUEL PRICE



INTERNATIONAL PRODUCT PRICES OF BASKET USED IN BASIC FUEL PRICE



BASIC FUEL PRICE IN SA CENTS PER LITRE

