

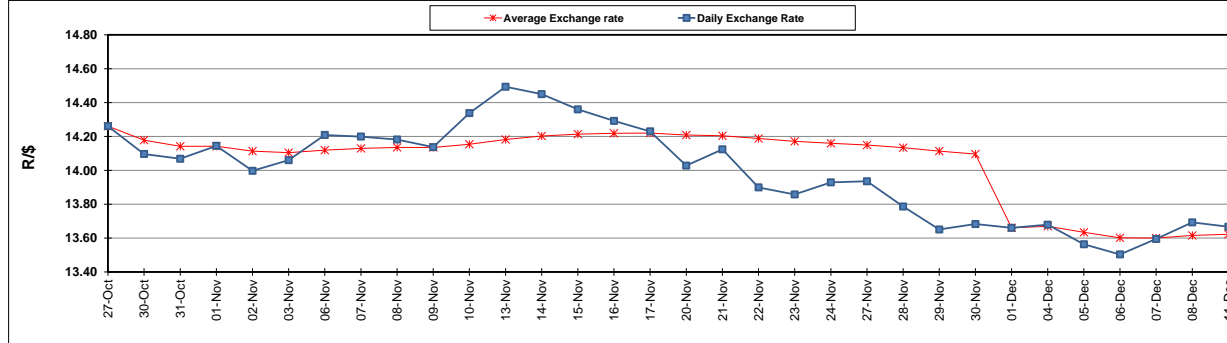
	PETROL 95 ULP	PETROL 93 ULP & LRP	DIESEL 0.05%	DIESEL 0.005%	ILL. PAR.
GAUTENG PUMP PRICE (SA c/l) AS FROM 07/12/2017	1 476.000	1 449.000	-	-	-
WHOLESALE PRICE (SA c/l) AS FROM 07/12/2017	-	-	1 295.630	1 302.030	865.388
SINGLE NATIONAL MAXIMUM RETAIL PRICE	-	-	-	-	1 119.000
BASIC FUEL PRICE - 11/12/2017 (SA c/l)	662.699	650.025	677.101	681.035	679.837
PRESS RELEASE CONTRIBUTION TO BFP 05/12/2017 - 11/12/2017 (SA c/l)	686.170	669.170	684.630	691.030	695.128
UNIT OVER/(UNDER) RECOVERY - 11/12/2017 (SA c/l)	23.471	19.145	7.529	9.995	15.291
AVERAGE BASIC FUEL PRICE 01/12/2017 - 11/12/2017	655.535	642.132	662.203	665.917	665.890
AVERAGE UNIT OVER/(UNDER) RECOVERY 01/12/2017 - 11/12/2017	1.878	(1.719)	(3.716)	0.255	(2.476)

ANALYSIS MOVEMENT OF AVERAGE OVER/(UNDER) RECOVERY

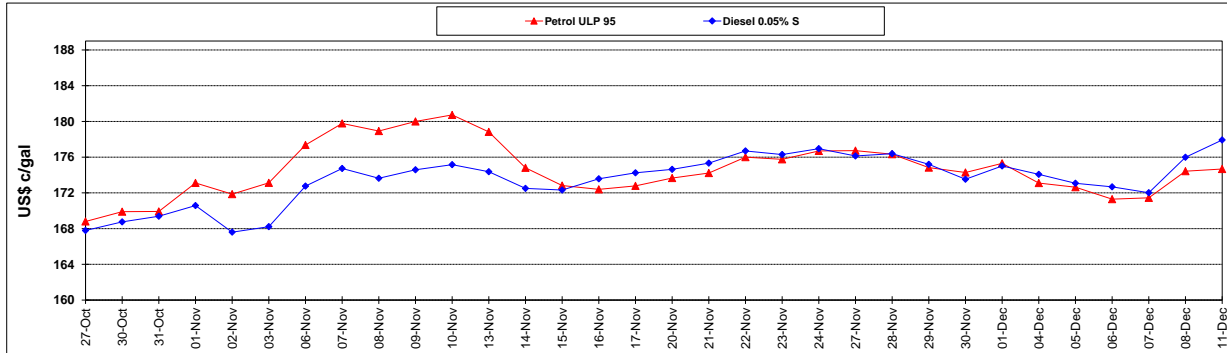
	PETROL 95	PETROL 93	DIESEL 0.05%	DIESEL 0.005%	ILL. PAR.
- MOVEMENT IN INTERNATIONAL PRODUCT PRICES	(20.907)	(24.038)	(26.733)	(22.890)	(25.621)
- MOVEMENT IN EXCHANGE RATE	22.785	22.319	23.017	23.146	23.145
AVERAGE UNIT OVER/(UNDER) RECOVERY 01/12/2017 - 11/12/2017	1.878	(1.719)	(3.716)	0.255	(2.476)

R/\$ EXCHANGE RATE - (R/\$ 13.6668 - 11/12/2017)

EXCHANGE RATE USED IN BASIC FUEL PRICE



INTERNATIONAL PRODUCT PRICES OF BASKET USED IN BASIC FUEL PRICE



BASIC FUEL PRICE IN SA CENTS PER LITRE

