

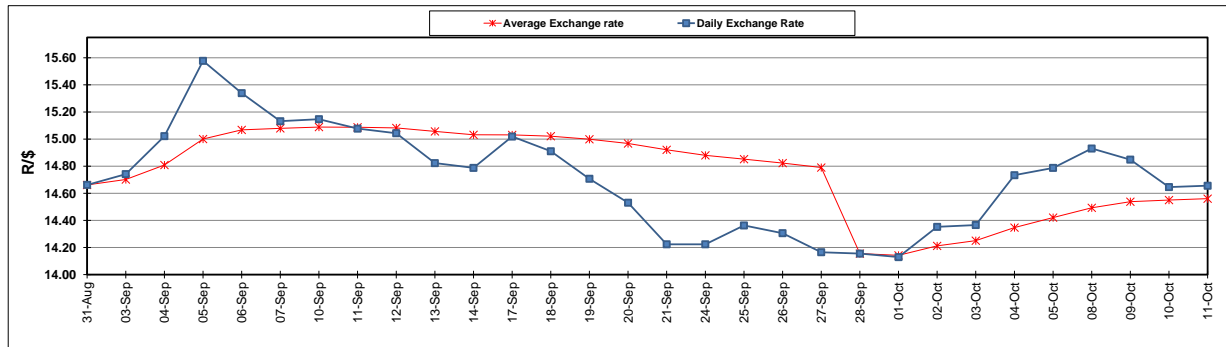
	PETROL 95 ULP	PETROL 93 ULP & LRP	DIESEL 0.05%	DIESEL 0.005%	ILL. PAR.
GAUTENG PUMP PRICE (SA c/l) AS FROM 03/10/2018	1 708.000	1 685.000	-	-	-
WHOLESALE PRICE (SA c/l) AS FROM 03/10/2018	-	-	1 564.830	1 569.230	1 057.088
SINGLE NATIONAL MAXIMUM RETAIL PRICE	-	-	-	-	1 372.000
BASIC FUEL PRICE - 11/10/2018 (SA c/l)	837.877	824.466	916.157	924.032	915.385
PRESS RELEASE CONTRIBUTION TO BFP 03/10/2018 - 11/10/2018 (SA c/l)	851.170	838.170	891.630	896.030	884.128
UNIT OVER/(UNDER) RECOVERY - 11/10/2018 (SA c/l)	13.293	13.704	(24.527)	(28.002)	(31.257)
AVERAGE BASIC FUEL PRICE 28/09/2018 - 11/10/2018	867.760	854.389	927.336	934.537	923.340
AVERAGE UNIT OVER/(UNDER) RECOVERY 28/09/2018 - 11/10/2018	(46.590)	(45.919)	(72.906)	(75.707)	(70.412)

ANALYSIS MOVEMENT OF AVERAGE OVER/(UNDER) RECOVERY

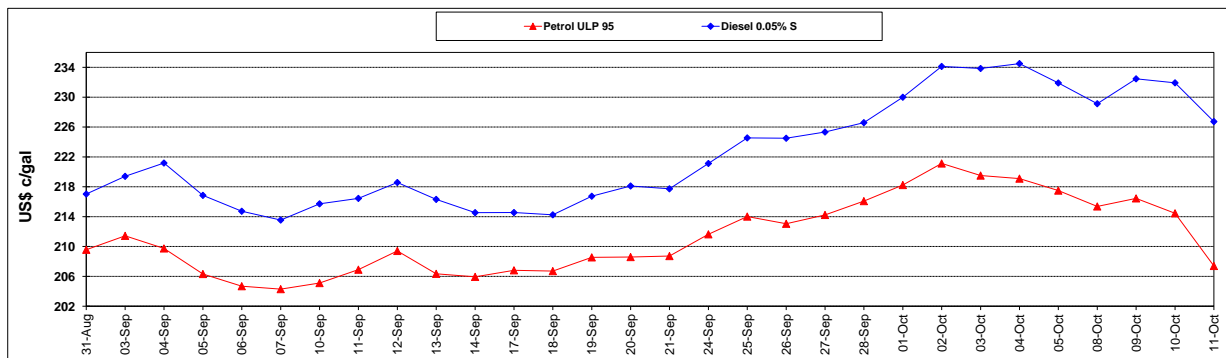
	PETROL 95	PETROL 93	DIESEL 0.05%	DIESEL 0.005%	ILL. PAR.
- MOVEMENT IN INTERNATIONAL PRODUCT PRICES	(60.268)	(59.386)	(87.523)	(90.437)	(84.966)
- MOVEMENT IN EXCHANGE RATE	13.678	13.467	14.617	14.730	14.554
AVERAGE UNIT OVER/(UNDER) RECOVERY 28/09/2018 - 11/10/2018	(46.590)	(45.919)	(72.906)	(75.707)	(70.412)

R/\$ EXCHANGE RATE - (R/\$14.6560 - 11/10/2018)

EXCHANGE RATE USED IN BASIC FUEL PRICE



INTERNATIONAL PRODUCT PRICES OF BASKET USED IN BASIC FUEL PRICE



BASIC FUEL PRICE IN SA CENTS PER LITRE

