

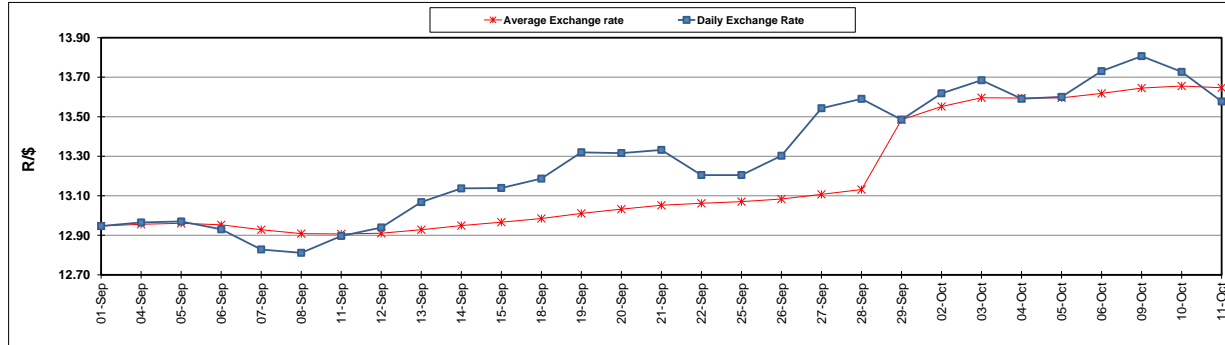
	PETROL 95 ULP	PETROL 93 ULP & LRP	DIESEL 0.05%	DIESEL 0.005%	ILL. PAR.
GAUTENG PUMP PRICE (SA c/l) AS FROM 04/10/2017	1 401.000	1 374.000	-	-	-
WHOLESALE PRICE (SA c/l) AS FROM 04/10/2017	-	-	1 212.330	1 217.730	771.088
SINGLE NATIONAL MAXIMUM RETAIL PRICE	-	-	-	-	992.000
BASIC FUEL PRICE - 11/10/2017 (SA c/l)	609.388	592.969	609.591	619.452	604.810
PRESS RELEASE CONTRIBUTION TO BFP 04/10/2017 - 11/10/2017 (SA c/l)	615.070	598.070	600.630	606.030	600.128
UNIT OVER/(UNDER) RECOVERY (SA c/l) - 11/10/2017	5.682	5.101	(8.961)	(13.422)	(4.682)
AVERAGE BASIC FUEL PRICE 29/09/2017 - 11/10/2017	609.709	593.362	613.272	623.286	610.189
AVERAGE UNIT OVER/(UNDER) RECOVERY 29/09/2017 - 11/10/2017	(4.305)	(3.625)	(26.642)	(31.256)	(23.061)

ANALYSIS MOVEMENT OF AVERAGE OVER/(UNDER) RECOVERY

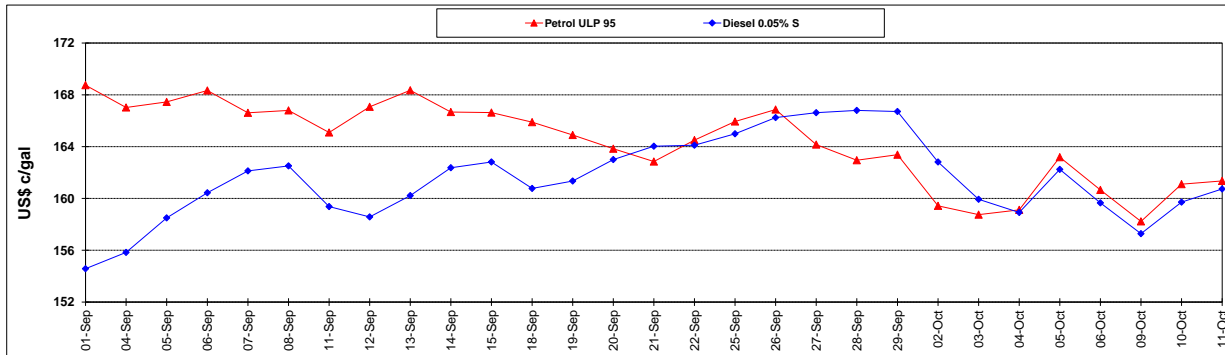
	PETROL 95	PETROL 93	DIESEL 0.05%	DIESEL 0.005%	ILL. PAR.
- MOVEMENT IN INTERNATIONAL PRODUCT PRICES	18.708	18.772	(3.494)	(7.730)	(0.029)
- MOVEMENT IN EXCHANGE RATE	(23.014)	(22.397)	(23.148)	(23.526)	(23.032)
AVERAGE UNIT OVER/(UNDER) RECOVERY 29/09/2017 - 11/10/2017	(4.305)	(3.625)	(26.642)	(31.256)	(23.061)

R/\$ EXCHANGE RATE - (R/\$ 13.5773- 11/10/2017)

EXCHANGE RATE USED IN BASIC FUEL PRICE



INTERNATIONAL PRODUCT PRICES OF BASKET USED IN BASIC FUEL PRICE



BASIC FUEL PRICE IN SA CENTS PER LITRE

