

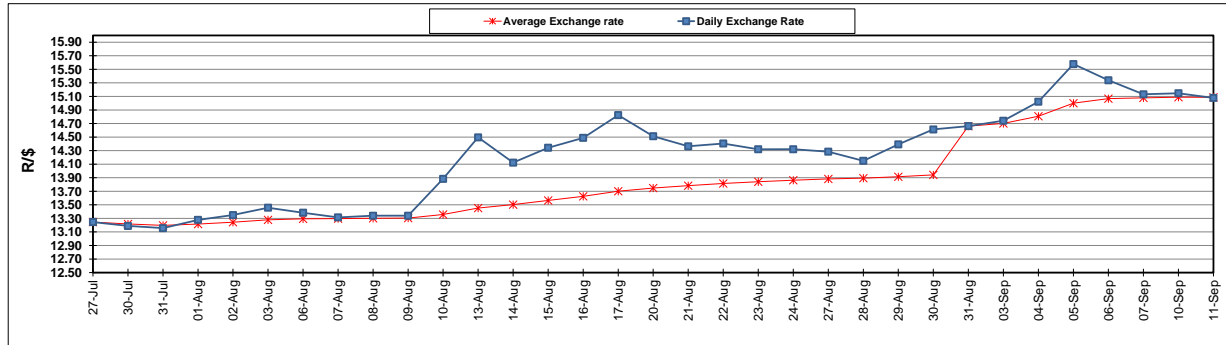
	PETROL 95 ULP	PETROL 93 ULP & LRP	DIESEL 0.05%	DIESEL 0.005%	ILL. PAR.
GAUTENG PUMP PRICE (SA c/l) AS FROM 05/09/2018	1 608.000	1 586.000	-	-	-
WHOLESALE PRICE (SA c/l) AS FROM 05/09/2018	-	-	1 440.830	1 445.230	953.088
SINGLE NATIONAL MAXIMUM RETAIL PRICE	-	-	-	-	1 233.000
BASIC FUEL PRICE - 11/09/2018 (SA c/l)	860.680	849.746	901.971	907.301	896.220
PRESS RELEASE CONTRIBUTION TO BFP 05/09/2018 - 11/09/2018 (SA c/l)	751.170	739.170	767.630	772.030	780.128
UNIT OVER/(UNDER) RECOVERY - 11/09/2018 (SA c/l)	(109.510)	(110.576)	(134.341)	(135.271)	(116.092)
AVERAGE BASIC FUEL PRICE 31/08/2018 - 11/09/2018	862.590	850.133	904.270	909.153	896.199
AVERAGE UNIT OVER/(UNDER) RECOVERY 31/08/2018 - 11/09/2018	(111.458)	(111.000)	(136.640)	(137.123)	(116.071)

ANALYSIS MOVEMENT OF AVERAGE OVER/(UNDER) RECOVERY

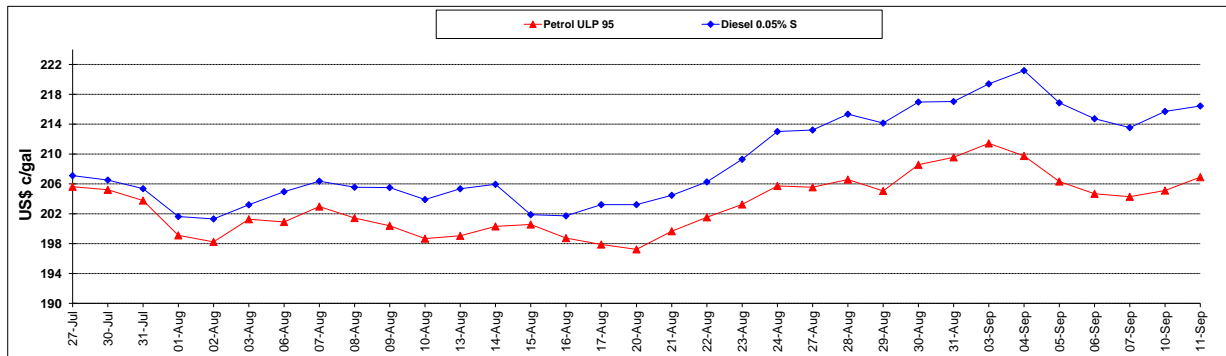
	PETROL 95	PETROL 93	DIESEL 0.05%	DIESEL 0.005%	ILL. PAR.
- MOVEMENT IN INTERNATIONAL PRODUCT PRICES	(46.039)	(46.527)	(68.061)	(68.174)	(48.104)
- MOVEMENT IN EXCHANGE RATE	(65.418)	(64.473)	(68.579)	(68.949)	(67.967)
AVERAGE UNIT OVER/(UNDER) RECOVERY 31/08/2018 - 11/09/2018	(111.458)	(111.000)	(136.640)	(137.123)	(116.071)

R/\$ EXCHANGE RATE - (R/\$15.0775 - 11/09/2018)

EXCHANGE RATE USED IN BASIC FUEL PRICE



INTERNATIONAL PRODUCT PRICES OF BASKET USED IN BASIC FUEL PRICE



BASIC FUEL PRICE IN SA CENTS PER LITRE

