

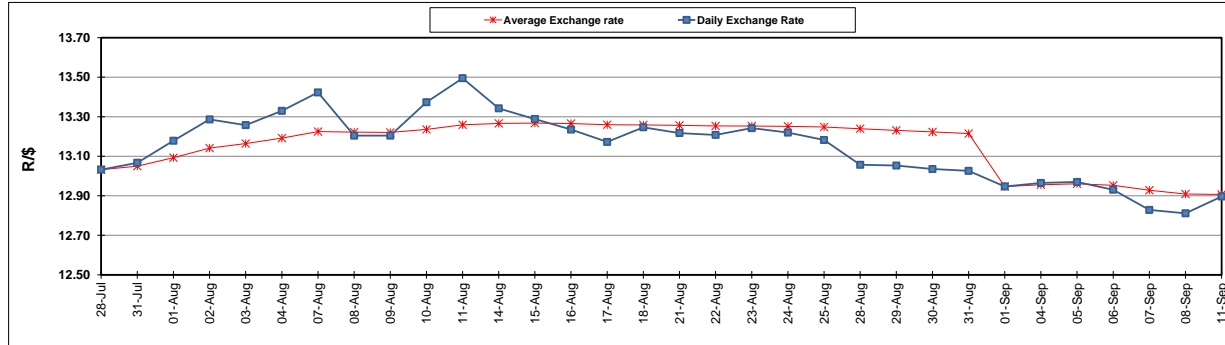
	PETROL 95 ULP	PETROL 93 ULP & LRP	DIESEL 0.05%	DIESEL 0.005%	ILL. PAR.
GAUTENG PUMP PRICE (SA c/l) AS FROM 06/09/2017	1 372.000	1 349.000	-	-	-
WHOLESALE PRICE (SA c/l) AS FROM 06/09/2017	-	-	1 170.330	1 175.730	732.088
SINGLE NATIONAL MAXIMUM RETAIL PRICE	-	-	-	-	941.000
BASIC FUEL PRICE - 11/09/2017 (SA c/l)	592.695	575.184	575.487	581.078	570.634
PRESS RELEASE CONTRIBUTION TO BFP 06/09/2017 - 11/09/2017 (SA c/l)	586.070	573.070	558.630	564.030	561.128
UNIT OVER/(UNDER) RECOVERY (SA c/l) - 11/09/2017	(6.625)	(2.114)	(16.857)	(17.048)	(9.506)
AVERAGE BASIC FUEL PRICE 01/09/2017 - 11/09/2017	600.242	583.837	574.818	580.543	572.707
AVERAGE UNIT OVER/(UNDER) RECOVERY 01/09/2017 - 11/09/2017	(40.915)	(37.510)	(35.045)	(35.370)	(32.579)

ANALYSIS MOVEMENT OF AVERAGE OVER/(UNDER) RECOVERY

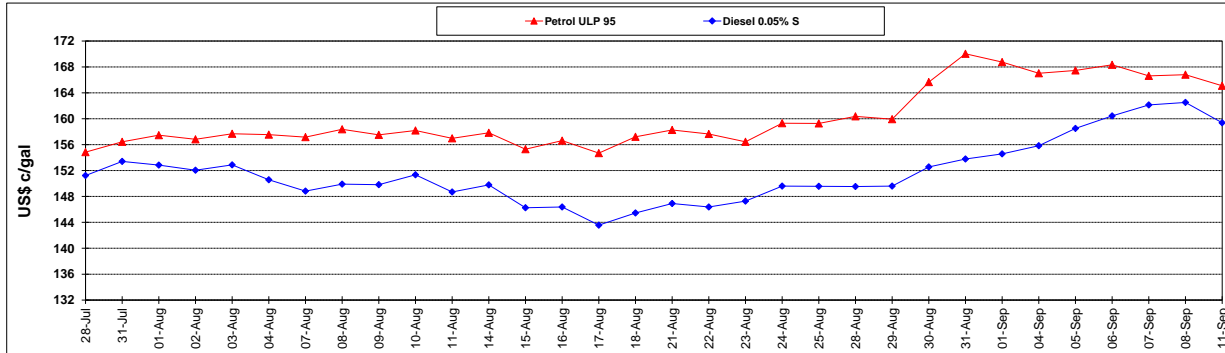
	PETROL 95	PETROL 93	DIESEL 0.05%	DIESEL 0.005%	ILL. PAR.
- MOVEMENT IN INTERNATIONAL PRODUCT PRICES	(55.253)	(51.456)	(48.775)	(49.237)	(46.259)
- MOVEMENT IN EXCHANGE RATE	14.338	13.946	13.730	13.867	13.680
AVERAGE UNIT OVER/(UNDER) RECOVERY 01/09/2017 - 11/09/2017	(40.915)	(37.510)	(35.045)	(35.370)	(32.579)

R/\$ EXCHANGE RATE - (R/\$ 12.8965 - 11/09/2017)

EXCHANGE RATE USED IN BASIC FUEL PRICE



INTERNATIONAL PRODUCT PRICES OF BASKET USED IN BASIC FUEL PRICE



BASIC FUEL PRICE IN SA CENTS PER LITRE

