

UPDATE OF THE BASIC FUEL PRICE

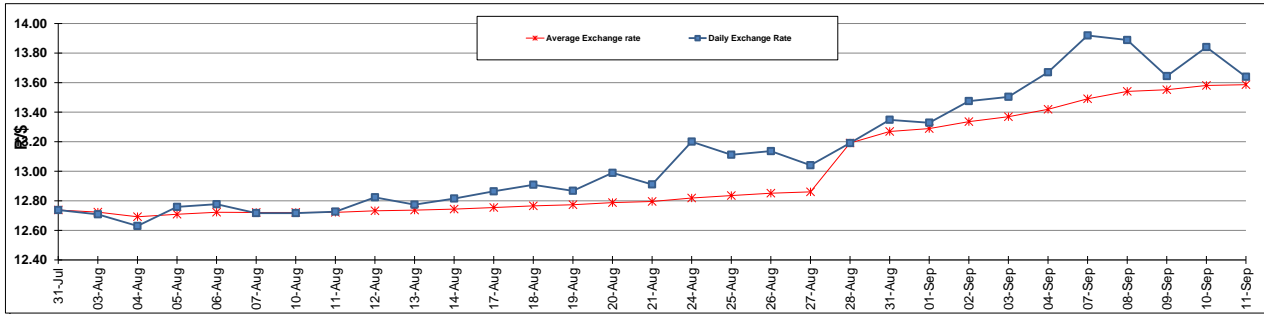
	PETROL 95 ULP	PETROL 93 ULP & LRP	DIESEL 0.05%	DIESEL 0.005%	ILL. PAR.
GAUTENG PUMP PRICE (SA c/l) AS FROM 02/09/2015	1,257.000	1,232.000	-	-	-
WHOLESALE PRICE (SA c/l) AS FROM 02/09/2015	-	-	1,040.970	1,049.370	661.828
SINGLE NATIONAL MAXIMUM RETAIL PRICE	-	-	-	-	847.000
BASIC FUEL PRICE - 11/09/2015 (SA c/l)	588.821	568.067	572.922	579.050	561.593
PRESS RELEASE CONTRIBUTION TO BFP 02/09/2015 - 11/09/2015 (SA c/l)	578.870	563.870	512.630	521.030	504.128
UNIT OVER/(UNDER) RECOVERY (SA c/l) - 11/09/2015	(9.951)	(4.197)	(60.292)	(58.020)	(57.465)
AVERAGE BASIC FUEL PRICE 28/08/2015 - 11/09/2015	600.126	577.005	578.155	585.078	566.622
AVERAGE UNIT OVER/(UNDER) RECOVERY 28/08/2015 - 11/09/2015	(1.183)	6.938	(50.797)	(50.139)	(47.494)

ANALYSIS MOVEMENT OF AVERAGE OVER/(UNDER) RECOVERY

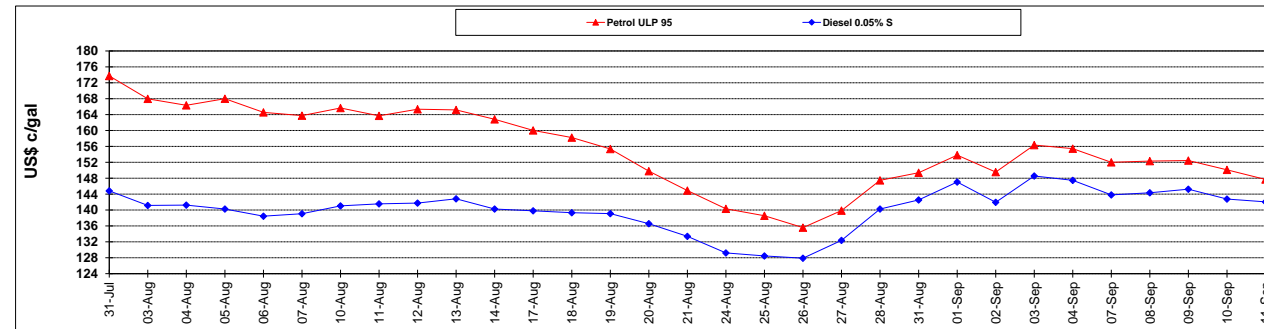
	PETROL 95	PETROL 93	DIESEL 0.05%	DIESEL 0.005%	ILL. PAR.
- MOVEMENT IN INTERNATIONAL PRODUCT PRICES	30.851	37.737	(19.937)	(18.909)	(17.249)
- MOVEMENT IN EXCHANGE RATE	(32.034)	(30.799)	(30.861)	(31.230)	(30.245)
AVERAGE UNIT OVER/(UNDER) RECOVERY 28/08/2015 - 11/09/2015	(1.183)	6.938	(50.797)	(50.139)	(47.494)

R/\$ EXCHANGE RATE - (R/\$ 13.6394 - 11/09/2015)

EXCHANGE RATE USED IN BASIC FUEL PRICE



INTERNATIONAL PRODUCT PRICES OF BASKET USED IN BASIC FUEL PRICE



BASIC FUEL PRICE IN SA CENTS PER LITRE

