

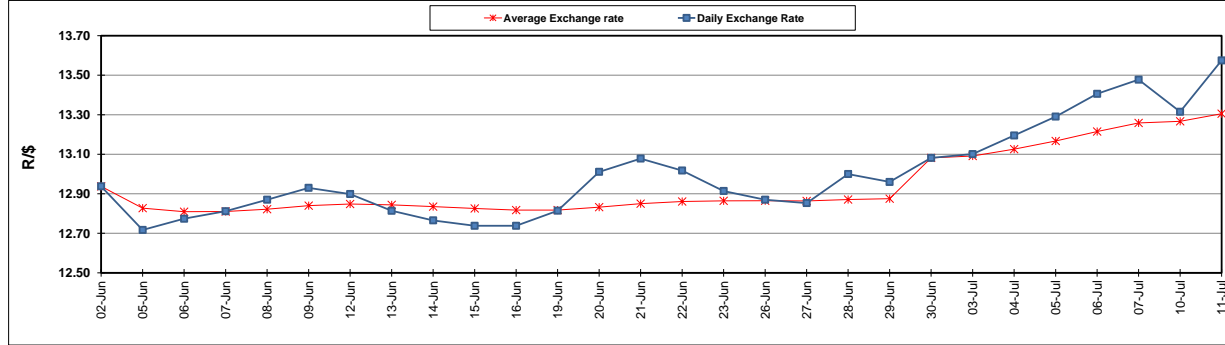
	PETROL 95 ULP	PETROL 93 ULP & LRP	DIESEL 0.05%	DIESEL 0.005%	ILL. PAR.
GAUTENG PUMP PRICE (SA c/l) AS FROM 05/07/2017	1 286.000	1 263.000	-	-	-
WHOLESALE PRICE (SA c/l) AS FROM 05/07/2017	-	-	1 097.330	1 101.730	657.088
SINGLE NATIONAL MAXIMUM RETAIL PRICE	-	-	-	-	841.000
BASIC FUEL PRICE - 11/07/2017 (SA c/l)	532.788	519.222	522.996	528.590	520.410
PRESS RELEASE CONTRIBUTION TO BFP 05/07/2017 - 11/07/2017 (SA c/l)	504.670	491.670	485.630	490.030	486.128
UNIT OVER/(UNDER) RECOVERY (SA c/l) - 11/07/2017	(28.118)	(27.552)	(37.366)	(38.560)	(34.282)
AVERAGE BASIC FUEL PRICE 30/06/2017 - 11/07/2017	530.813	515.287	522.197	527.564	520.840
AVERAGE UNIT OVER/(UNDER) RECOVERY 30/06/2017- 11/07/2017	(0.643)	2.258	(14.067)	(15.034)	(13.337)

ANALYSIS MOVEMENT OF AVERAGE OVER/(UNDER) RECOVERY

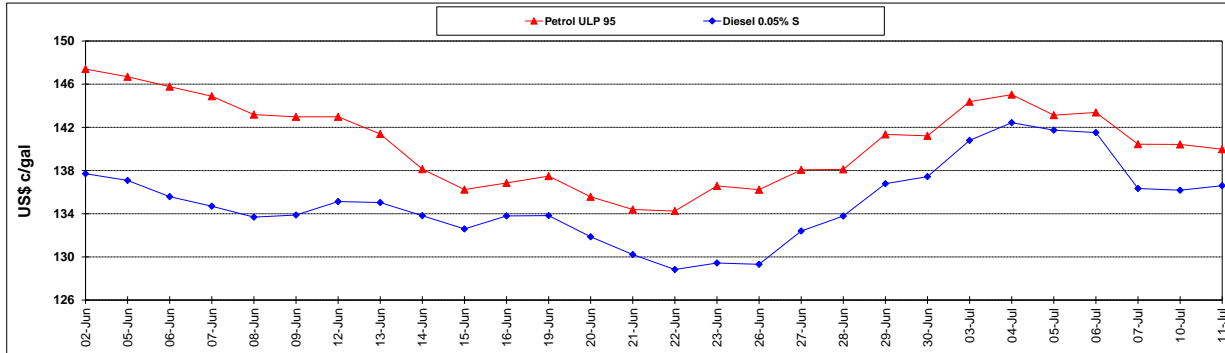
	PETROL 95	PETROL 93	DIESEL 0.05%	DIESEL 0.005%	ILL. PAR.
- MOVEMENT IN INTERNATIONAL PRODUCT PRICES	16.496	18.896	2.794	2.000	3.480
- MOVEMENT IN EXCHANGE RATE	(17.139)	(16.638)	(16.861)	(17.034)	(16.817)
AVERAGE UNIT OVER/(UNDER) RECOVERY 30/06/2017 - 11/07/2017	(0.643)	2.258	(14.067)	(15.034)	(13.337)

R/\$ EXCHANGE RATE - (R/\$ 13.5750 - 11/07/2017)

EXCHANGE RATE USED IN BASIC FUEL PRICE



INTERNATIONAL PRODUCT PRICES OF BASKET USED IN BASIC FUEL PRICE



BASIC FUEL PRICE IN SA CENTS PER LITRE

