

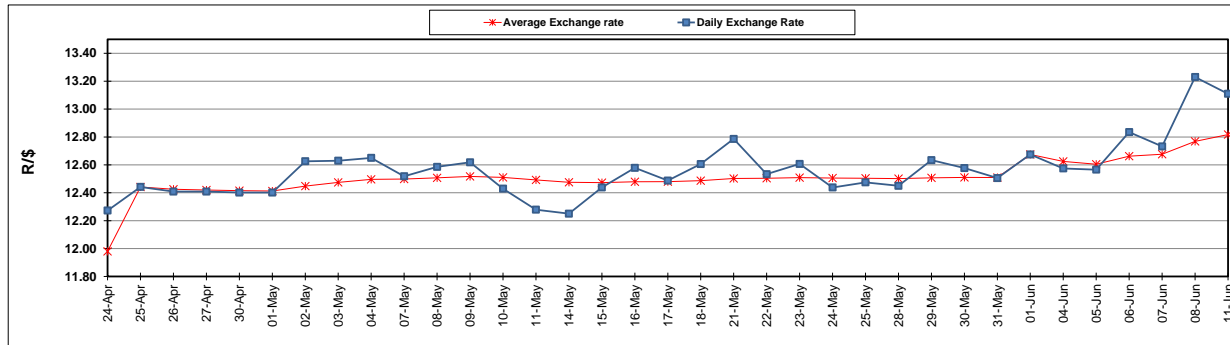
	PETROL 95 ULP	PETROL 93 ULP & LRP	DIESEL 0.05%	DIESEL 0.005%	ILL. PAR.
GAUTENG PUMP PRICE (SA c/l) AS FROM 06/06/2018	1 579.000	1 554.000	-	-	-
WHOLESALE PRICE (SA c/l) AS FROM 06/06/2018	-	-	1 418.830	1 425.230	927.088
SINGLE NATIONAL MAXIMUM RETAIL PRICE	-	-	-	-	1 198.000
BASIC FUEL PRICE - 11/06/2018 (SA c/l)	743.823	731.457	760.537	764.628	763.234
PRESS RELEASE CONTRIBUTION TO BFP 06/06/2018 - 11/06/2018 (SA c/l)	727.070	712.070	745.630	752.030	754.128
UNIT OVER/(UNDER) RECOVERY - 11/06/2018 (SA c/l)	(16.753)	(19.387)	(14.907)	(12.598)	(9.106)
AVERAGE BASIC FUEL PRICE 01/06/2018 - 11/06/2018	726.781	714.334	742.667	746.930	744.765
AVERAGE UNIT OVER/(UNDER) RECOVERY 01/06/2018 - 11/06/2018	(34.854)	(37.407)	(33.466)	(32.186)	(25.779)

ANALYSIS MOVEMENT OF AVERAGE OVER/(UNDER) RECOVERY

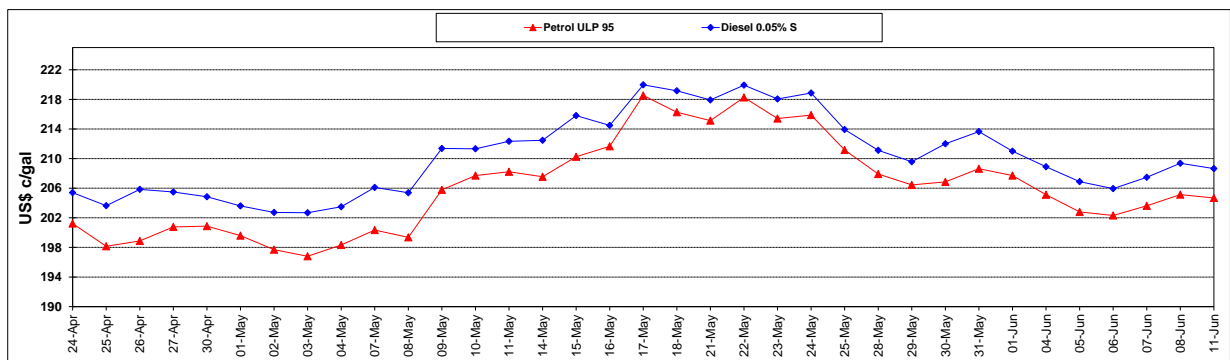
	PETROL 95	PETROL 93	DIESEL 0.05%	DIESEL 0.005%	ILL. PAR.
- MOVEMENT IN INTERNATIONAL PRODUCT PRICES	(17.423)	(20.275)	(15.654)	(14.272)	(7.918)
- MOVEMENT IN EXCHANGE RATE	(17.431)	(17.132)	(17.812)	(17.914)	(17.862)
AVERAGE UNIT OVER/(UNDER) RECOVERY 01/06/2018 - 11/06/2018	(34.854)	(37.407)	(33.466)	(32.186)	(25.779)

R/\$ EXCHANGE RATE - (R/\$13.1095 - 11/06/2018)

EXCHANGE RATE USED IN BASIC FUEL PRICE



INTERNATIONAL PRODUCT PRICES OF BASKET USED IN BASIC FUEL PRICE



BASIC FUEL PRICE IN SA CENTS PER LITRE

