

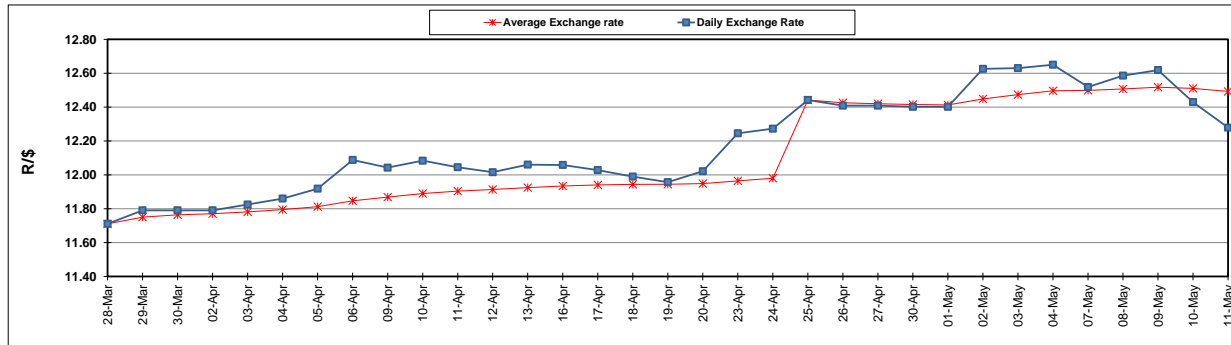
	PETROL 95 ULP	PETROL 93 ULP & LRP	DIESEL 0.05%	DIESEL 0.005%	ILL. PAR.
GAUTENG PUMP PRICE (SA c/l) AS FROM 02/05/2018	1 497.000	1 472.000	-	-	-
WHOLESALE PRICE (SA c/l) AS FROM 02/05/2018	-	-	1 333.830	1 338.230	845.088
SINGLE NATIONAL MAXIMUM RETAIL PRICE	-	-	-	-	1 089.000
BASIC FUEL PRICE - 11/05/2018 (SA c/l)	710.105	698.720	726.395	732.435	733.793
PRESS RELEASE CONTRIBUTION TO BFP 02/05/2018 - 11/05/2018 (SA c/l)	645.070	630.070	660.630	665.030	672.128
UNIT OVER/(UNDER) RECOVERY - 11/05/2018 (SA c/l)	(65.035)	(68.650)	(65.765)	(67.405)	(61.665)
AVERAGE BASIC FUEL PRICE 25/04/2018 - 11/05/2018	698.657	685.565	718.492	724.279	730.793
AVERAGE UNIT OVER/(UNDER) RECOVERY 25/04/2018 - 11/05/2018	(72.433)	(74.341)	(80.554)	(81.557)	(78.665)

### ANALYSIS MOVEMENT OF AVERAGE OVER/(UNDER) RECOVERY

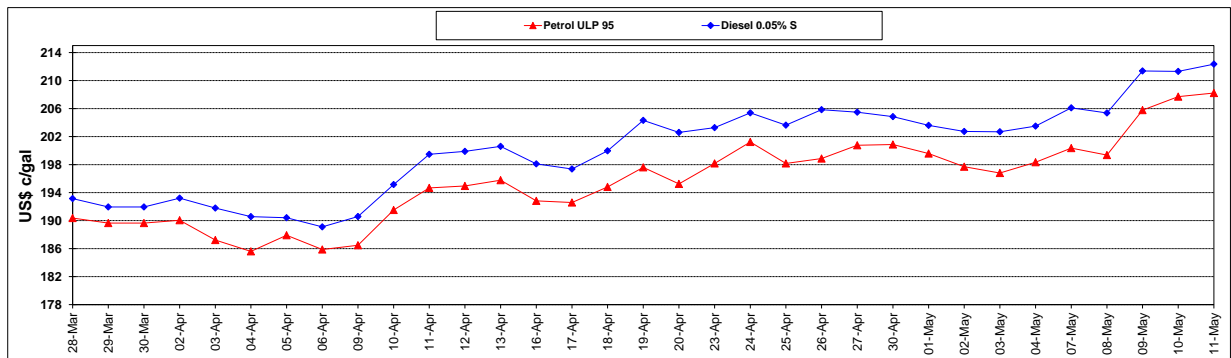
	PETROL 95	PETROL 93	DIESEL 0.05%	DIESEL 0.005%	ILL. PAR.
- MOVEMENT IN INTERNATIONAL PRODUCT PRICES	(43.765)	(46.210)	(51.072)	(51.837)	(48.678)
- MOVEMENT IN EXCHANGE RATE	(28.668)	(28.131)	(29.482)	(29.720)	(29.987)
AVERAGE UNIT OVER/(UNDER) RECOVERY 25/04/2018 - 11/05/2018	(72.433)	(74.341)	(80.554)	(81.557)	(78.665)

### R/\$ EXCHANGE RATE - (R/\$12.2790 - 11/05/2018)

#### EXCHANGE RATE USED IN BASIC FUEL PRICE



#### INTERNATIONAL PRODUCT PRICES OF BASKET USED IN BASIC FUEL PRICE



#### BASIC FUEL PRICE IN SA CENTS PER LITRE

