

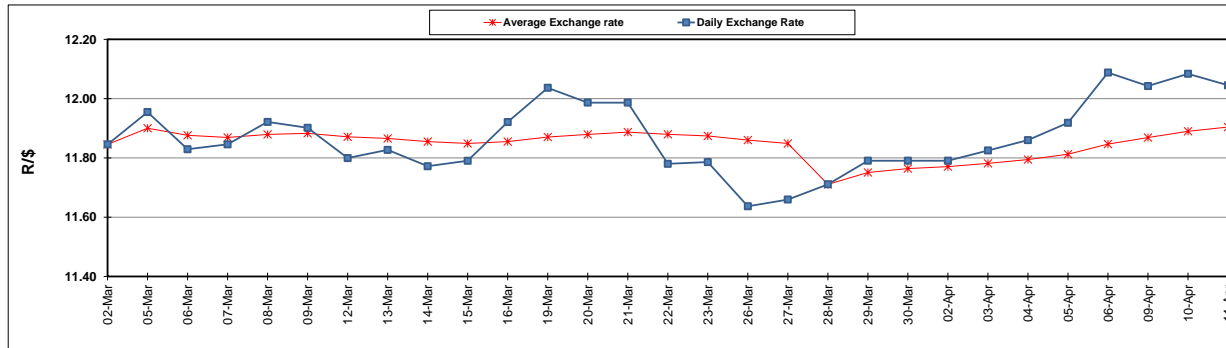
	PETROL 95 ULP	PETROL 93 ULP & LRP	DIESEL 0.05%	DIESEL 0.005%	ILL. PAR.
GAUTENG PUMP PRICE (SA c/l) AS FROM 07/03/2018	1 448.000	1 423.000	-	-	-
WHOLESALE PRICE (SA c/l) AS FROM 07/03/2018	-	-	1 274.830	1 280.230	793.088
SINGLE NATIONAL MAXIMUM RETAIL PRICE	-	-	-	-	1 026.000
BASIC FUEL PRICE - 11/04/2018 (SA c/l)	654.911	638.561	673.166	678.604	689.579
PRESS RELEASE CONTRIBUTION TO BFP 04/04/2018 - 11/04/2018 (SA c/l)	596.070	581.070	601.630	607.030	620.128
UNIT OVER/(UNDER) RECOVERY - 11/04/2018 (SA c/l)	(58.841)	(57.491)	(71.536)	(71.574)	(69.451)
AVERAGE BASIC FUEL PRICE 28/03/2018 - 11/04/2018	629.503	614.573	643.344	648.555	654.684
AVERAGE UNIT OVER/(UNDER) RECOVERY 28/03/2018 - 11/04/2018	(37.933)	(36.639)	(43.078)	(42.888)	(32.284)

ANALYSIS MOVEMENT OF AVERAGE OVER/(UNDER) RECOVERY

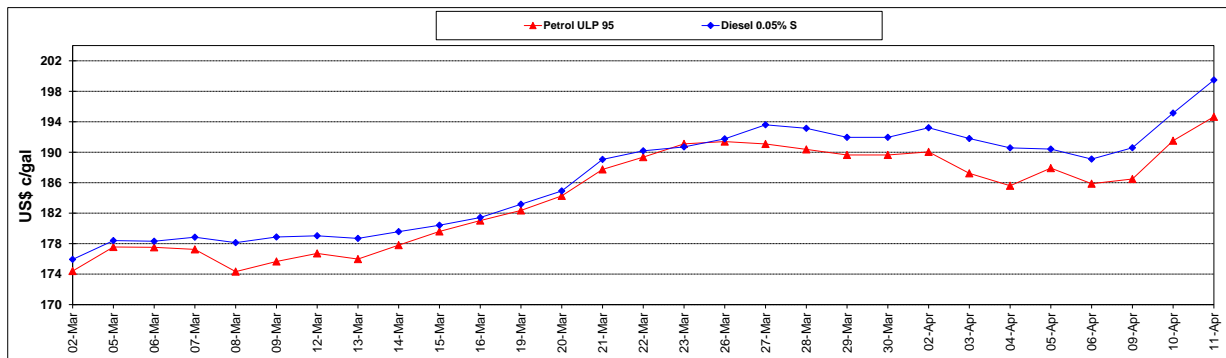
	PETROL 95	PETROL 93	DIESEL 0.05%	DIESEL 0.005%	ILL. PAR.
- MOVEMENT IN INTERNATIONAL PRODUCT PRICES	(35.014)	(33.789)	(40.095)	(39.882)	(29.247)
- MOVEMENT IN EXCHANGE RATE	(2.919)	(2.850)	(2.983)	(3.007)	(3.036)
AVERAGE UNIT OVER/(UNDER) RECOVERY 28/03/2018 - 11/04/2018	(37.933)	(36.639)	(43.078)	(42.888)	(32.284)

R/\$ EXCHANGE RATE - (R/\$12.0450 - 11/04/2018)

EXCHANGE RATE USED IN BASIC FUEL PRICE



INTERNATIONAL PRODUCT PRICES OF BASKET USED IN BASIC FUEL PRICE



BASIC FUEL PRICE IN SA CENTS PER LITRE

