

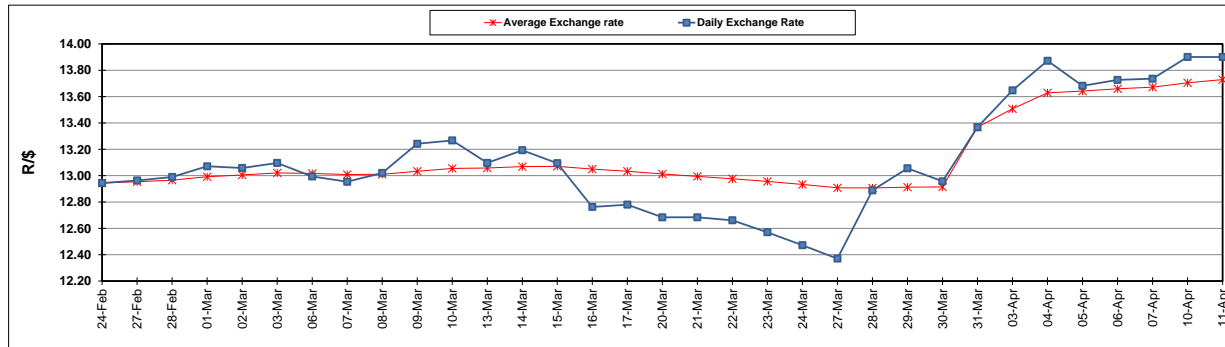
	PETROL 95 ULP	PETROL 93 ULP & LRP	DIESEL 0.05%	DIESEL 0.005%	ILL. PAR.
GAUTENG PUMP PRICE (SA c/l) AS FROM 05/04/2017	1 330.000	1 308.000	-	-	-
WHOLESALE PRICE (SA c/l) AS FROM 05/04/2017	-	-	1 150.330	1 152.730	702.088
SINGLE NATIONAL MAXIMUM RETAIL PRICE	-	-	-	-	901.000
BASIC FUEL PRICE - 11/04/2017 (SA c/l)	637.442	620.448	607.645	611.606	603.505
PRESS RELEASE CONTRIBUTION TO BFP 05/04/2017 - 11/04/2017 (SA c/l)	548.670	536.670	538.630	541.030	531.128
UNIT OVER/(UNDER) RECOVERY (SA c/l) - 11/04/2017	(88.772)	(83.778)	(69.015)	(70.576)	(72.377)
AVERAGE BASIC FUEL PRICE 31/03/2017 - 11/04/2017	616.969	599.804	583.659	587.690	581.793
AVERAGE UNIT OVER/(UNDER) RECOVERY 31/03/2017- 11/04/2017	(44.224)	(39.809)	(26.279)	(27.910)	(31.165)

ANALYSIS MOVEMENT OF AVERAGE OVER/(UNDER) RECOVERY

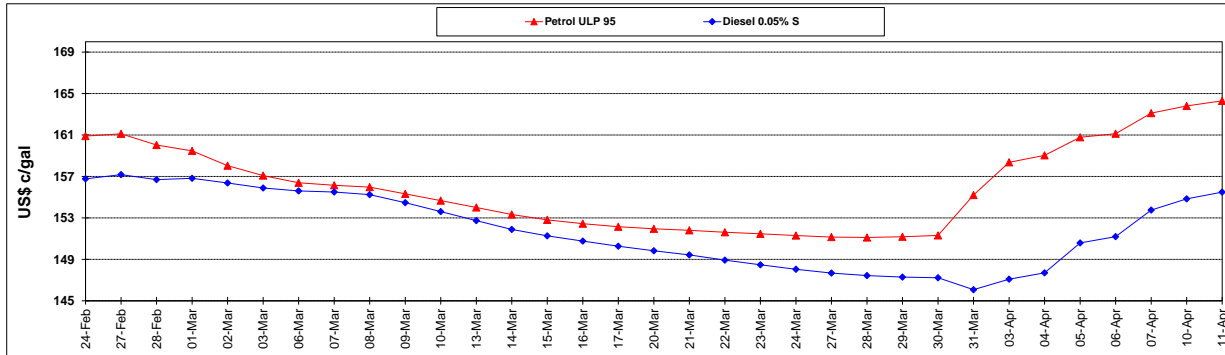
	PETROL 95	PETROL 93	DIESEL 0.05%	DIESEL 0.005%	ILL. PAR.
- MOVEMENT IN INTERNATIONAL PRODUCT PRICES	(7.626)	(4.229)	8.343	6.951	3.346
- MOVEMENT IN EXCHANGE RATE	(36.598)	(35.580)	(34.622)	(34.861)	(34.511)
AVERAGE UNIT OVER/(UNDER) RECOVERY 31/03/2017 - 11/04/2017	(44.224)	(39.809)	(26.279)	(27.910)	(31.165)

R/\$ EXCHANGE RATE - (R/\$ 13.9005 - 11/04/2017)

EXCHANGE RATE USED IN BASIC FUEL PRICE



INTERNATIONAL PRODUCT PRICES OF BASKET USED IN BASIC FUEL PRICE



BASIC FUEL PRICE IN SA CENTS PER LITRE

