

UPDATE OF THE BASIC FUEL PRICE

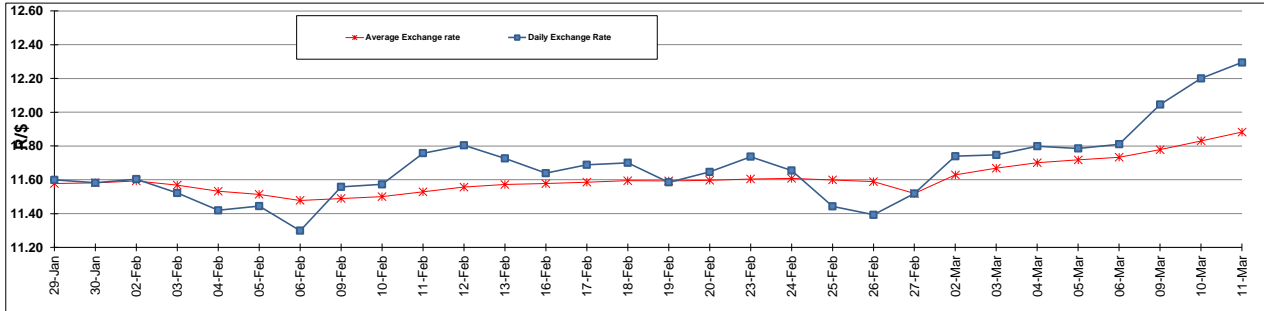
	PETROL 95 ULP	PETROL 93 ULP & LRP	DIESEL 0.05%	DIESEL 0.005%	ILL. PAR.
GAUTENG PUMP PRICE (SA c/l) AS FROM 04/03/2015	1,127.000	1,105.000	-	-	-
WHOLESALE PRICE (SA c/l) AS FROM 04/03/2015	-	-	1,000.090	1,004.490	718.928
SINGLE NATIONAL MAXIMUM RETAIL PRICE	-	-	-	-	931.000
BASIC FUEL PRICE - 11/03/2015 (SA c/l)	612.053	593.348	597.049	602.139	583.706
PRESS RELEASE CONTRIBUTION TO BFP 04/03/2015 - 11/03/2015 (SA c/l)	536.250	524.250	554.630	559.030	564.128
UNIT OVER/(UNDER) RECOVERY (SA c/l) - 11/03/2015	(75.803)	(69.098)	(42.419)	(43.109)	(19.578)
AVERAGE BASIC FUEL PRICE 27/02/2015 - 11/03/2015	608.077	591.195	599.174	604.158	588.408
AVERAGE UNIT OVER/(UNDER) RECOVERY 27/02/2015 - 11/03/2015	(103.827)	(98.945)	(69.210)	(69.794)	(48.613)

ANALYSIS MOVEMENT OF AVERAGE OVER/(UNDER) RECOVERY

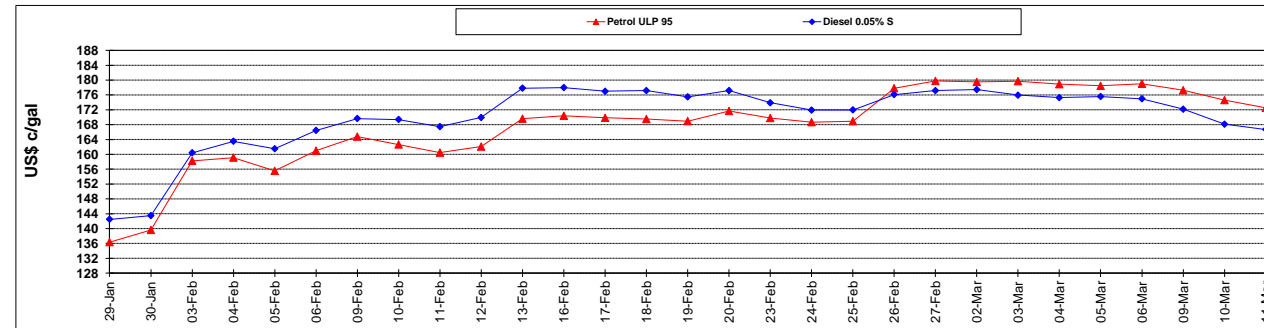
	PETROL 95	PETROL 93	DIESEL 0.05%	DIESEL 0.005%	ILL. PAR.
- MOVEMENT IN INTERNATIONAL PRODUCT PRICES	(88.812)	(84.347)	(54.416)	(54.877)	(34.084)
- MOVEMENT IN EXCHANGE RATE	(15.015)	(14.598)	(14.795)	(14.918)	(14.529)
AVERAGE UNIT OVER/(UNDER) RECOVERY 27/02/2015 - 11/03/2015	(103.827)	(98.945)	(69.210)	(69.794)	(48.614)

R/\$ EXCHANGE RATE - (R/\$ 12.2945 - 11/03/2015)

EXCHANGE RATE USED IN BASIC FUEL PRICE



INTERNATIONAL PRODUCT PRICES OF BASKET USED IN BASIC FUEL PRICE



BASIC FUEL PRICE IN SA CENTS PER LITRE

