

UPDATE OF THE BASIC FUEL PRICE

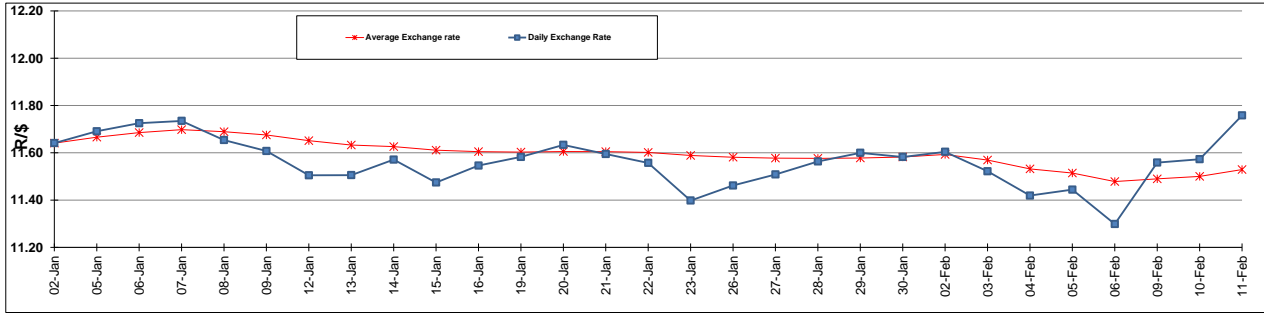
	PETROL 95 ULP	PETROL 93 ULP & LRP	DIESEL 0.05%	DIESEL 0.005%	ILL. PAR.
GAUTENG PUMP PRICE (SA c/l) AS FROM 04/02/2015	1,031.000	1,009.000	-	-	-
WHOLESALE PRICE (SA c/l) AS FROM 04/02/2015	-	-	926.090	930.490	645.928
SINGLE NATIONAL MAXIMUM RETAIL PRICE	-	-	-	-	833.000
BASIC FUEL PRICE - 11/02/2015 (SA c/l)	547.986	532.187	573.739	576.884	582.599
PRESS RELEASE CONTRIBUTION TO BFP 04/02/2015 - 11/02/2015 (SA c/l)	440.250	428.250	480.630	485.030	491.128
UNIT OVER/(UNDER) RECOVERY (SA c/l) - 11/02/2015	(107.736)	(103.937)	(93.109)	(91.854)	(91.471)
AVERAGE BASIC FUEL PRICE 30/01/2015 - 11/02/2015	526.128	509.949	544.369	548.065	559.426
AVERAGE UNIT OVER/(UNDER) RECOVERY 30/01/2015 - 11/02/2015	(54.878)	(50.699)	(29.739)	(29.035)	(34.298)

ANALYSIS MOVEMENT OF AVERAGE OVER/(UNDER) RECOVERY

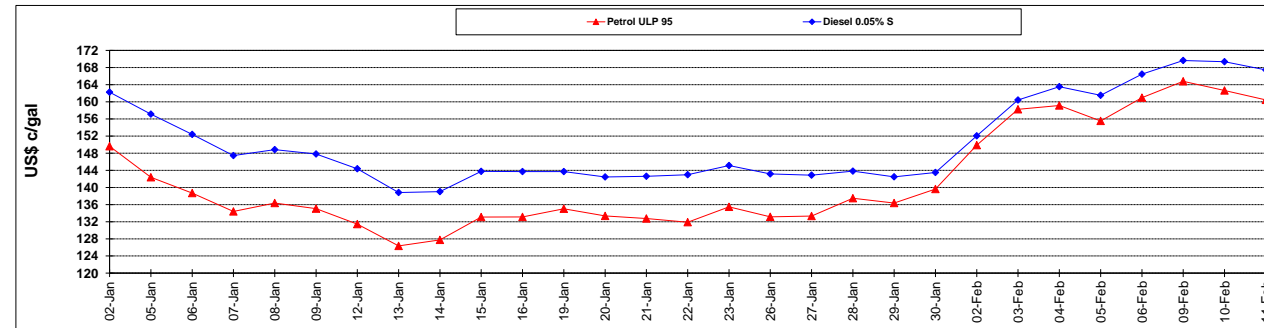
	PETROL 95	PETROL 93	DIESEL 0.05%	DIESEL 0.005%	ILL. PAR.
- MOVEMENT IN INTERNATIONAL PRODUCT PRICES	(57.105)	(52.858)	(32.043)	(31.355)	(36.666)
- MOVEMENT IN EXCHANGE RATE	2.227	2.159	2.304	2.320	2.368
AVERAGE UNIT OVER/(UNDER) RECOVERY 30/01/2015 - 11/02/2015	(54.878)	(50.699)	(29.739)	(29.035)	(34.298)

R/\$ EXCHANGE RATE - (R/\$ 11.7579 - 11/02/2015)

EXCHANGE RATE USED IN BASIC FUEL PRICE



INTERNATIONAL PRODUCT PRICES OF BASKET USED IN BASIC FUEL PRICE



BASIC FUEL PRICE IN SA CENTS PER LITRE

