

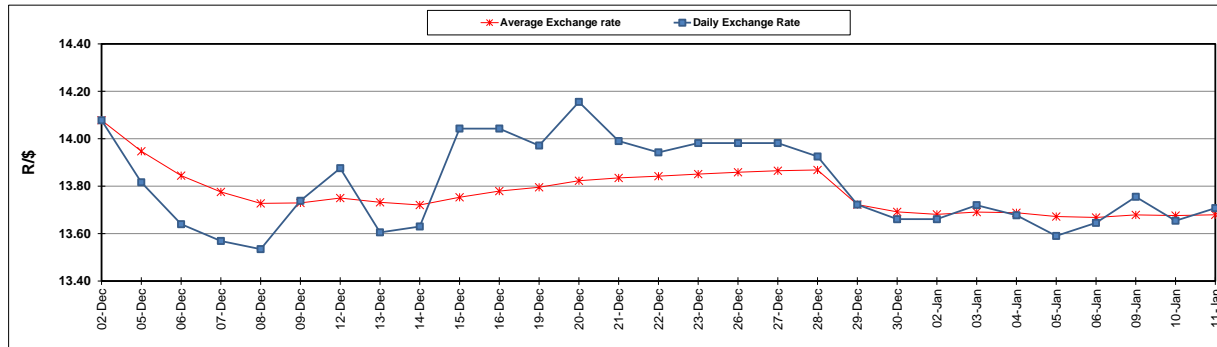
	PETROL 95 ULP	PETROL 93 ULP & LRP	DIESEL 0.05%	DIESEL 0.005%	ILL. PAR.
GAUTENG PUMP PRICE (SA c/l) AS FROM 04/01/2017	1 333.000	1 309.000	-	-	-
WHOLESALE PRICE (SA c/l) AS FROM 04/01/2017	-	-	1 141.830	1 144.230	741.588
SINGLE NATIONAL MAXIMUM RETAIL PRICE	-	-	-	-	954.000
BASIC FUEL PRICE - 11/01/2017 (SA c/l)	606.660	592.685	585.862	588.854	583.231
PRESS RELEASE CONTRIBUTION TO BFP 04/01/2017 - 11/01/2017 (SA c/l)	591.870	577.870	569.630	572.030	574.128
UNIT OVER/(UNDER) RECOVERY (SA c/l) - 11/01/2017	(14.790)	(14.815)	(16.232)	(16.824)	(9.103)
AVERAGE BASIC FUEL PRICE 29/12/2016 - 11/01/2017	618.413	602.844	593.797	596.373	591.697
AVERAGE UNIT OVER/(UNDER) RECOVERY 29/12/2016- 11/01/2017	(45.743)	(44.974)	(39.767)	(39.143)	(34.769)

ANALYSIS MOVEMENT OF AVERAGE OVER/(UNDER) RECOVERY

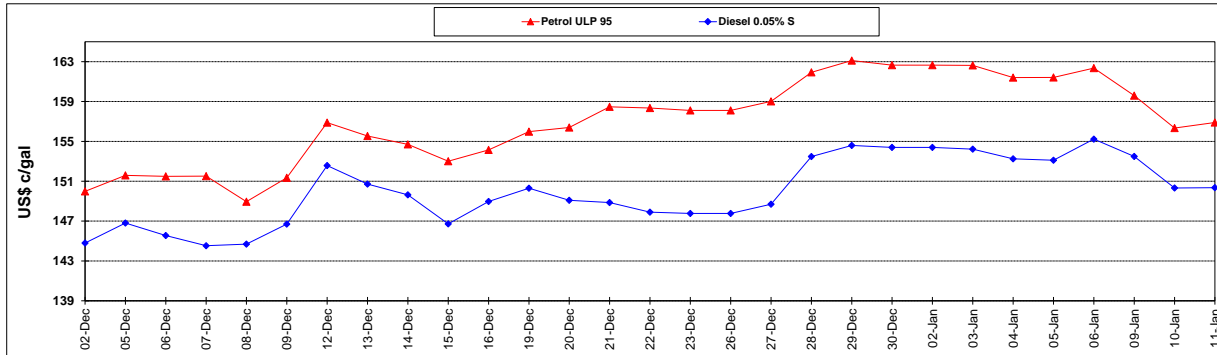
	PETROL 95	PETROL 93	DIESEL 0.05%	DIESEL 0.005%	ILL. PAR.
- MOVEMENT IN INTERNATIONAL PRODUCT PRICES	(54.296)	(53.312)	(47.980)	(47.391)	(42.953)
- MOVEMENT IN EXCHANGE RATE	8.553	8.338	8.213	8.248	8.184
AVERAGE UNIT OVER/(UNDER) RECOVERY 29/12/2016 - 11/01/2017	(45.743)	(44.974)	(39.767)	(39.143)	(34.769)

R/\$ EXCHANGE RATE - (R/\$ 13.7075 - 11/01/2017)

EXCHANGE RATE USED IN BASIC FUEL PRICE



INTERNATIONAL PRODUCT PRICES OF BASKET USED IN BASIC FUEL PRICE



BASIC FUEL PRICE IN SA CENTS PER LITRE

