

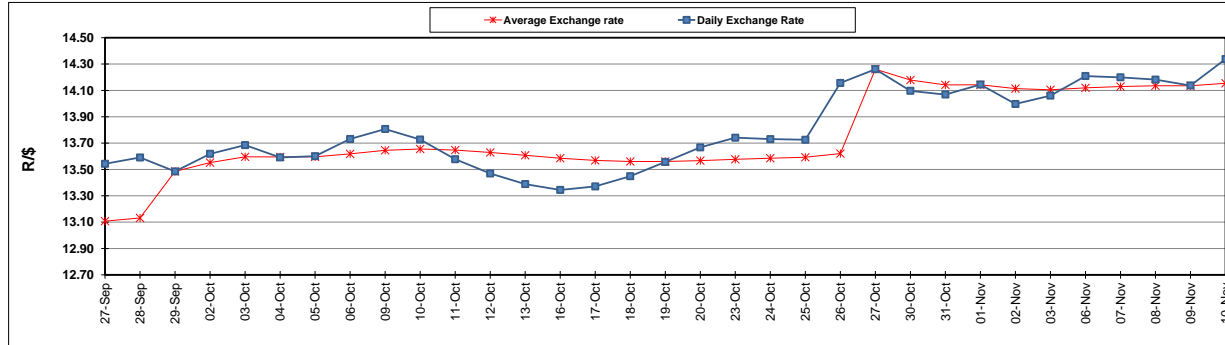
	PETROL 95 ULP	PETROL 93 ULP & LRP	DIESEL 0.05%	DIESEL 0.005%	ILL. PAR.
GAUTENG PUMP PRICE (SA c/l) AS FROM 01/11/2017	1 405.000	1 378.000	-	-	-
WHOLESALE PRICE (SA c/l) AS FROM 01/11/2017	-	-	1 235.330	1 244.730	792.088
SINGLE NATIONAL MAXIMUM RETAIL PRICE	-	-	-	-	1 021.000
BASIC FUEL PRICE - 10/11/2017 (SA c/l)	720.322	703.579	702.073	708.127	716.867
PRESS RELEASE CONTRIBUTION TO BFP 01/11/2017 - 10/11/2017 (SA c/l)	619.070	602.070	623.630	633.030	621.128
UNIT OVER/(UNDER) RECOVERY (SA c/l) - 10/11/2017	(101.252)	(101.509)	(78.443)	(75.097)	(95.739)
AVERAGE BASIC FUEL PRICE 27/10/2017 - 10/11/2017	688.245	672.008	677.285	684.814	687.537
AVERAGE UNIT OVER/(UNDER) RECOVERY 27/10/2017 - 10/11/2017	(70.266)	(71.029)	(59.928)	(59.148)	(72.136)

ANALYSIS MOVEMENT OF AVERAGE OVER/(UNDER) RECOVERY

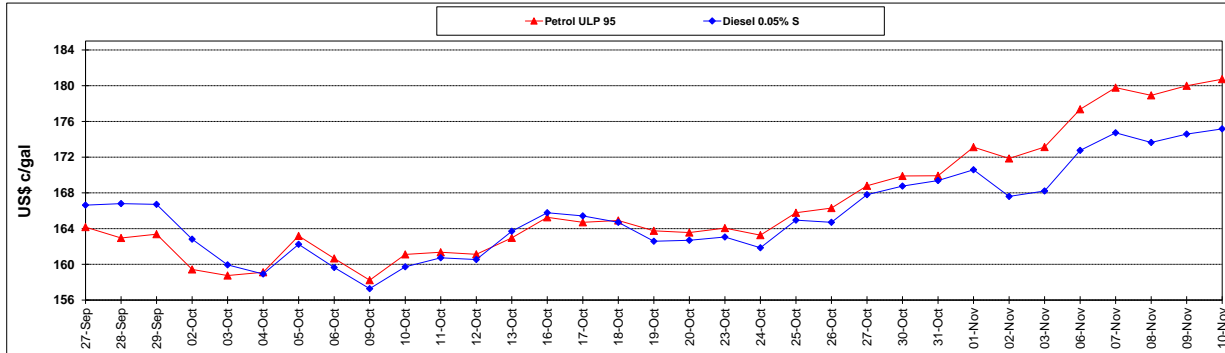
	PETROL 95	PETROL 93	DIESEL 0.05%	DIESEL 0.005%	ILL. PAR.
- MOVEMENT IN INTERNATIONAL PRODUCT PRICES	(44.358)	(45.732)	(34.433)	(33.369)	(46.255)
- MOVEMENT IN EXCHANGE RATE	(25.908)	(25.297)	(25.495)	(25.779)	(25.881)
AVERAGE UNIT OVER/(UNDER) RECOVERY 27/10/2017 - 10/11/2017	(70.266)	(71.029)	(59.928)	(59.148)	(72.136)

R/\$ EXCHANGE RATE - (R/\$ 14.3378 - 10/11/2017)

EXCHANGE RATE USED IN BASIC FUEL PRICE



INTERNATIONAL PRODUCT PRICES OF BASKET USED IN BASIC FUEL PRICE



BASIC FUEL PRICE IN SA CENTS PER LITRE

