

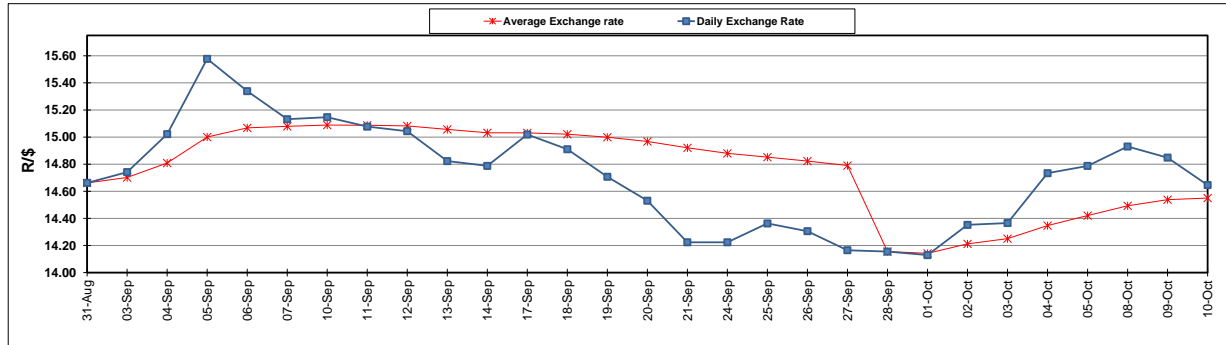
	PETROL 95 ULP	PETROL 93 ULP & LRP	DIESEL 0.05%	DIESEL 0.005%	ILL. PAR.
GAUTENG PUMP PRICE (SA c/l) AS FROM 03/10/2018	1 708.000	1 685.000	-	-	-
WHOLESALE PRICE (SA c/l) AS FROM 03/10/2018	-	-	1 564.830	1 569.230	1 057.088
SINGLE NATIONAL MAXIMUM RETAIL PRICE	-	-	-	-	1 372.000
BASIC FUEL PRICE - 10/10/2018 (SA c/l)	864.738	851.337	935.704	943.928	934.207
PRESS RELEASE CONTRIBUTION TO BFP 03/10/2018 - 10/10/2018 (SA c/l)	851.170	838.170	891.630	896.030	884.128
UNIT OVER/(UNDER) RECOVERY - 10/10/2018 (SA c/l)	(13.568)	(13.167)	(44.074)	(47.898)	(50.079)
AVERAGE BASIC FUEL PRICE 28/09/2018 - 10/10/2018	871.080	857.713	928.578	935.704	924.224
AVERAGE UNIT OVER/(UNDER) RECOVERY 28/09/2018 - 10/10/2018	(53.243)	(52.543)	(78.281)	(81.007)	(74.763)

ANALYSIS MOVEMENT OF AVERAGE OVER/(UNDER) RECOVERY

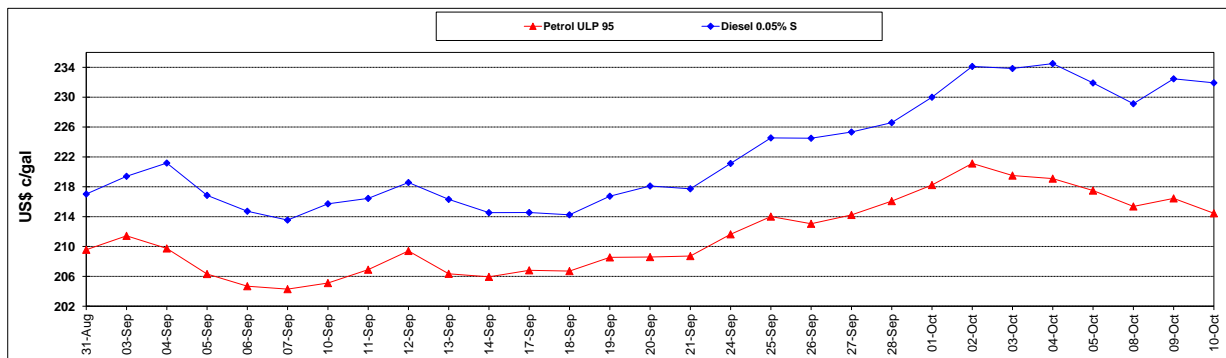
	PETROL 95	PETROL 93	DIESEL 0.05%	DIESEL 0.005%	ILL. PAR.
- MOVEMENT IN INTERNATIONAL PRODUCT PRICES	(67.624)	(66.703)	(93.611)	(96.454)	(90.021)
- MOVEMENT IN EXCHANGE RATE	14.381	14.160	15.330	15.447	15.258
AVERAGE UNIT OVER/(UNDER) RECOVERY 28/09/2018 - 10/10/2018	(53.243)	(52.543)	(78.281)	(81.007)	(74.763)

R/\$ EXCHANGE RATE - (R/\$14.6458 - 10/10/2018)

EXCHANGE RATE USED IN BASIC FUEL PRICE



INTERNATIONAL PRODUCT PRICES OF BASKET USED IN BASIC FUEL PRICE



BASIC FUEL PRICE IN SA CENTS PER LITRE

