

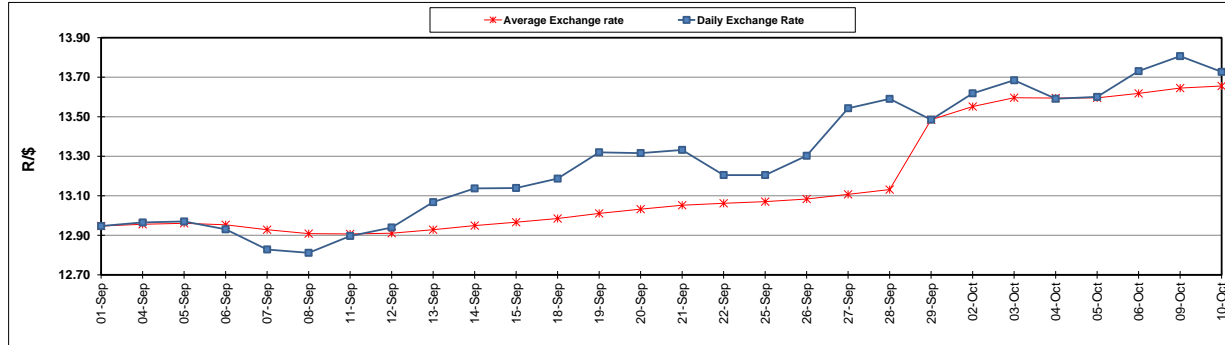
	PETROL 95 ULP	PETROL 93 ULP & LRP	DIESEL 0.05%	DIESEL 0.005%	ILL. PAR.
GAUTENG PUMP PRICE (SA c/l) AS FROM 04/10/2017	1 401.000	1 374.000	-	-	-
WHOLESALE PRICE (SA c/l) AS FROM 04/10/2017	-	-	1 212.330	1 217.730	771.088
SINGLE NATIONAL MAXIMUM RETAIL PRICE	-	-	-	-	992.000
BASIC FUEL PRICE - 10/10/2017 (SA c/l)	615.115	598.503	612.518	622.836	608.226
PRESS RELEASE CONTRIBUTION TO BFP 04/10/2017 - 10/10/2017 (SA c/l)	615.070	598.070	600.630	606.030	600.128
UNIT OVER/(UNDER) RECOVERY (SA c/l) - 10/10/2017	(0.045)	(0.433)	(11.888)	(16.806)	(8.098)
AVERAGE BASIC FUEL PRICE 29/09/2017 - 10/10/2017	609.749	593.411	613.732	623.766	610.862
AVERAGE UNIT OVER/(UNDER) RECOVERY 29/09/2017 - 10/10/2017	(5.554)	(4.716)	(28.852)	(33.486)	(25.359)

### ANALYSIS MOVEMENT OF AVERAGE OVER/(UNDER) RECOVERY

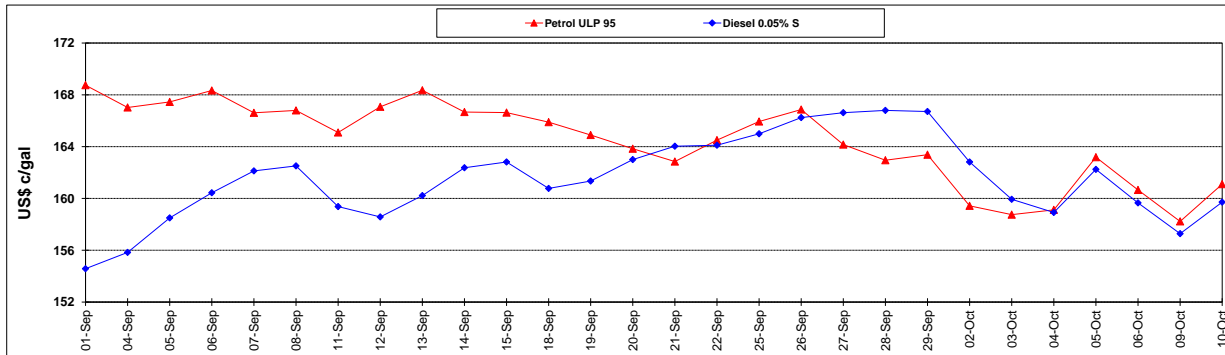
	PETROL 95	PETROL 93	DIESEL 0.05%	DIESEL 0.005%	ILL. PAR.
- MOVEMENT IN INTERNATIONAL PRODUCT PRICES	17.835	18.046	(5.310)	(9.559)	(1.927)
- MOVEMENT IN EXCHANGE RATE	(23.389)	(22.762)	(23.542)	(23.927)	(23.432)
AVERAGE UNIT OVER/(UNDER) RECOVERY 29/09/2017 - 10/10/2017	(5.554)	(4.716)	(28.852)	(33.486)	(25.359)

**R/\$ EXCHANGE RATE - (R/\$ 13.7270 - 10/10/2017)**

### EXCHANGE RATE USED IN BASIC FUEL PRICE



### INTERNATIONAL PRODUCT PRICES OF BASKET USED IN BASIC FUEL PRICE



### BASIC FUEL PRICE IN SA CENTS PER LITRE

