

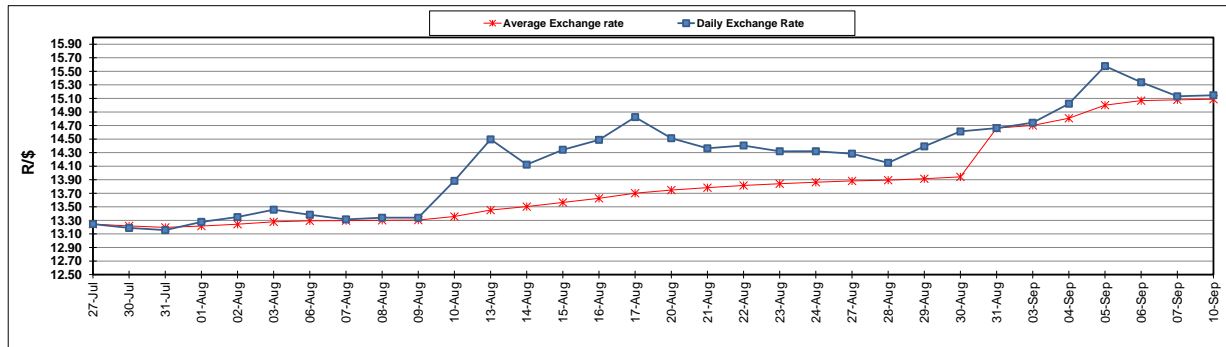
	PETROL 95 ULP	PETROL 93 ULP & LRP	DIESEL 0.05%	DIESEL 0.005%	ILL. PAR.
GAUTENG PUMP PRICE (SA c/l) AS FROM 05/09/2018	1 608.000	1 586.000	-	-	-
WHOLESALE PRICE (SA c/l) AS FROM 05/09/2018	-	-	1 440.830	1 445.230	953.088
SINGLE NATIONAL MAXIMUM RETAIL PRICE	-	-	-	-	1 233.000
BASIC FUEL PRICE - 10/09/2018 (SA c/l)	857.376	846.390	903.155	908.204	897.287
PRESS RELEASE CONTRIBUTION TO BFP 05/09/2018 - 10/09/2018 (SA c/l)	751.170	739.170	767.630	772.030	780.128
UNIT OVER/(UNDER) RECOVERY - 10/09/2018 (SA c/l)	(106.206)	(107.220)	(135.525)	(136.174)	(117.159)
AVERAGE BASIC FUEL PRICE 31/08/2018 - 10/09/2018	862.863	850.188	904.599	909.418	896.195
AVERAGE UNIT OVER/(UNDER) RECOVERY 31/08/2018 - 10/09/2018	(111.736)	(111.061)	(136.969)	(137.388)	(116.067)

ANALYSIS MOVEMENT OF AVERAGE OVER/(UNDER) RECOVERY

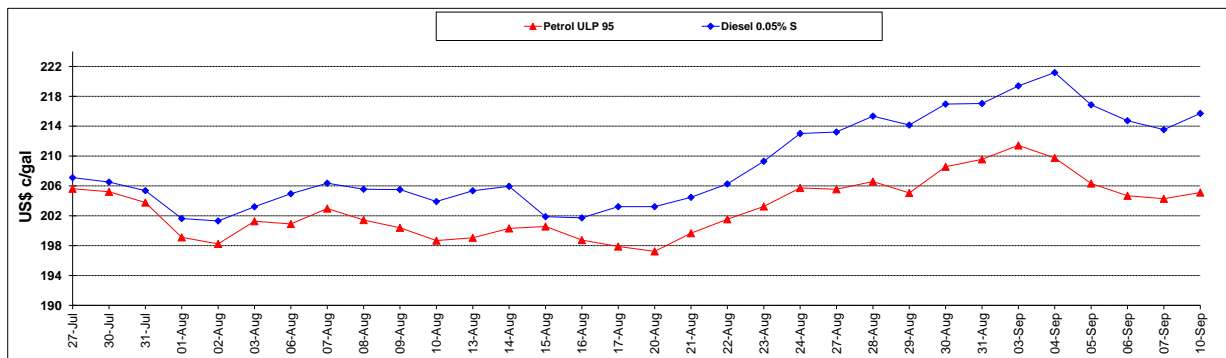
	PETROL 95	PETROL 93	DIESEL 0.05%	DIESEL 0.005%	ILL. PAR.
- MOVEMENT IN INTERNATIONAL PRODUCT PRICES	(46.223)	(46.511)	(68.287)	(68.341)	(48.024)
- MOVEMENT IN EXCHANGE RATE	(65.513)	(64.550)	(68.682)	(69.047)	(68.043)
AVERAGE UNIT OVER/(UNDER) RECOVERY 31/08/2018 - 10/09/2018	(111.736)	(111.061)	(136.969)	(137.388)	(116.067)

R/\$ EXCHANGE RATE - (R/\$15.1468 - 10/09/2018)

EXCHANGE RATE USED IN BASIC FUEL PRICE



INTERNATIONAL PRODUCT PRICES OF BASKET USED IN BASIC FUEL PRICE



BASIC FUEL PRICE IN SA CENTS PER LITRE

