

## UPDATE OF THE BASIC FUEL PRICE

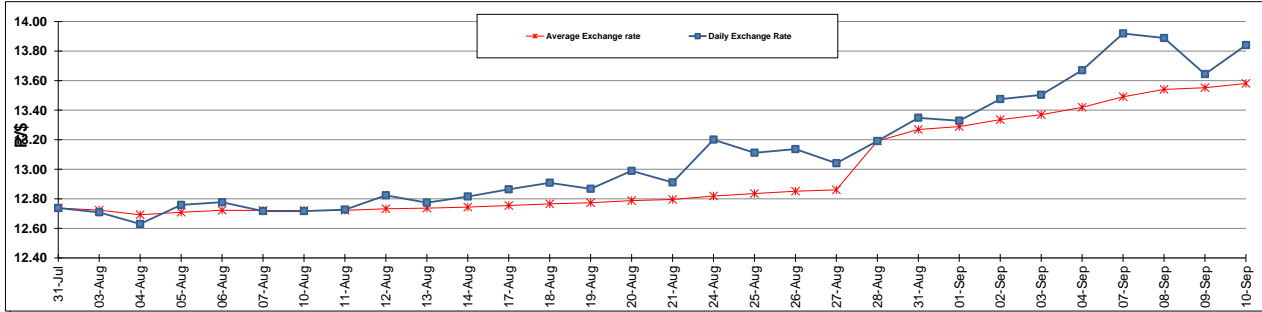
	PETROL 95 ULP	PETROL 93 ULP & LRP	DIESEL 0.05%	DIESEL 0.005%	ILL. PAR.
GAUTENG PUMP PRICE (SA c/l) AS FROM 02/09/2015	1,257.000	1,232.000	-	-	-
WHOLESALE PRICE (SA c/l) AS FROM 02/09/2015	-	-	1,040.970	1,049.370	661.828
SINGLE NATIONAL MAXIMUM RETAIL PRICE	-	-	-	-	847.000
BASIC FUEL PRICE - 10/09/2015 (SA c/l)	606.271	585.212	583.892	590.098	571.964
PRESS RELEASE CONTRIBUTION TO BFP 02/09/2015 - 10/09/2015 (SA c/l)	578.870	563.870	512.630	521.030	504.128
UNIT OVER/(UNDER) RECOVERY (SA c/l) - 10/09/2015	(27.401)	(21.342)	(71.262)	(69.068)	(67.836)
AVERAGE BASIC FUEL PRICE 28/08/2015 - 10/09/2015	601.257	577.899	578.678	585.681	567.346
AVERAGE UNIT OVER/(UNDER) RECOVERY 28/08/2015 - 10/09/2015	(0.307)	8.051	(49.848)	(49.351)	(46.718)

### ANALYSIS MOVEMENT OF AVERAGE OVER/(UNDER) RECOVERY

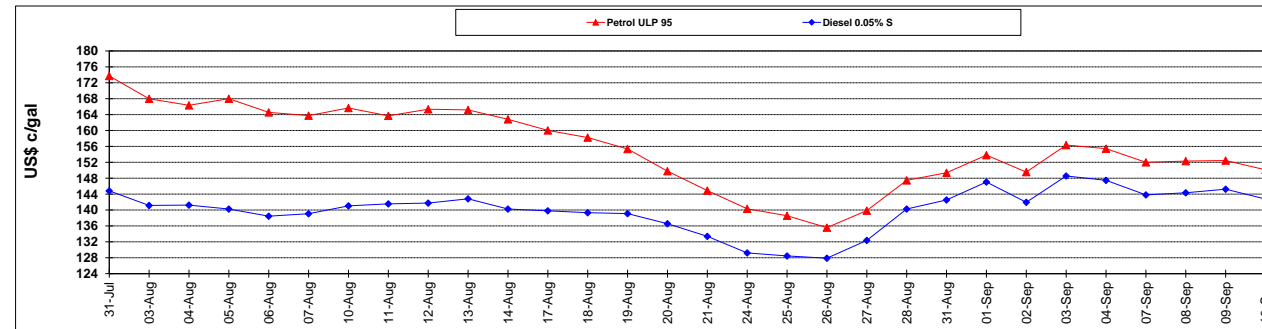
	PETROL 95	PETROL 93	DIESEL 0.05%	DIESEL 0.005%	ILL. PAR.
- MOVEMENT IN INTERNATIONAL PRODUCT PRICES	31.565	38.685	(19.173)	(18.305)	(16.644)
- MOVEMENT IN EXCHANGE RATE	(31.872)	(30.634)	(30.675)	(31.046)	(30.074)
AVERAGE UNIT OVER/(UNDER) RECOVERY 28/08/2015 - 10/09/2015	(0.307)	8.051	(49.848)	(49.351)	(46.718)

**R/\$ EXCHANGE RATE - (R/\$ 13.8400 - 10/09/2015)**

### EXCHANGE RATE USED IN BASIC FUEL PRICE



### INTERNATIONAL PRODUCT PRICES OF BASKET USED IN BASIC FUEL PRICE



### BASIC FUEL PRICE IN SA CENTS PER LITRE

