

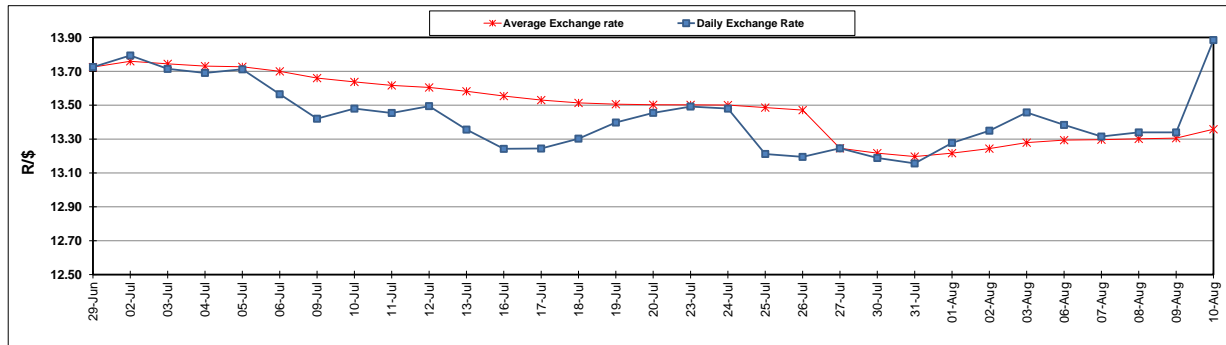
	PETROL 95 ULP	PETROL 93 ULP & LRP	DIESEL 0.05%	DIESEL 0.005%	ILL. PAR.
GAUTENG PUMP PRICE (SA c/l) AS FROM 04/08/2018	1 603.000	1 582.000	-	-	-
WHOLESALE PRICE (SA c/l) AS FROM 04/08/2018	-	-	1 440.830	1 445.230	953.088
SINGLE NATIONAL MAXIMUM RETAIL PRICE	-	-	-	-	1 233.000
BASIC FUEL PRICE - 10/08/2018 (SA c/l)	763.535	748.207	785.741	790.312	785.442
PRESS RELEASE CONTRIBUTION TO BFP 01/08/2018 - 10/08/2018 (SA c/l)	751.070	739.070	767.630	772.030	780.128
UNIT OVER/(UNDER) RECOVERY - 10/08/2018 (SA c/l)	(12.465)	(9.137)	(18.111)	(18.282)	(5.314)
AVERAGE BASIC FUEL PRICE 27/07/2018 - 10/08/2018	745.603	732.514	759.349	763.538	766.051
AVERAGE UNIT OVER/(UNDER) RECOVERY 27/06/2018 - 10/08/2018	5.194	6.283	9.372	9.583	12.987

ANALYSIS MOVEMENT OF AVERAGE OVER/(UNDER) RECOVERY

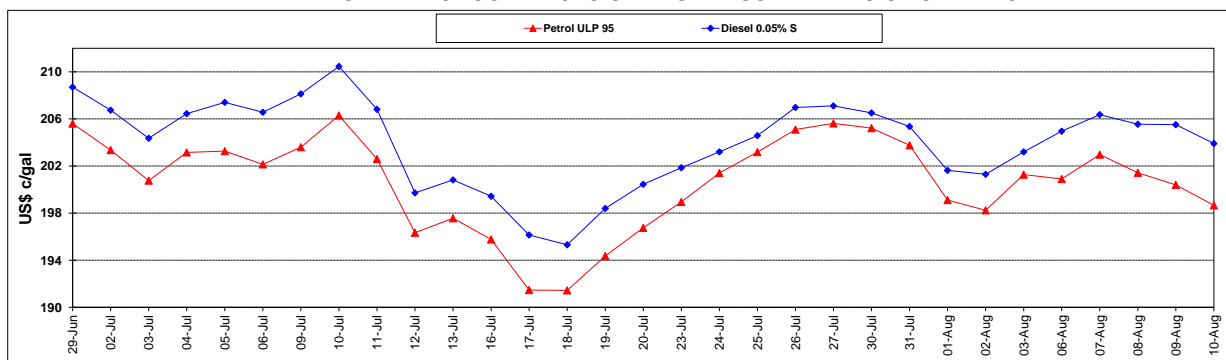
	PETROL 95	PETROL 93	DIESEL 0.05%	DIESEL 0.005%	ILL. PAR.
- MOVEMENT IN INTERNATIONAL PRODUCT PRICES	(1.136)	0.064	2.926	3.101	6.483
- MOVEMENT IN EXCHANGE RATE	6.330	6.219	6.446	6.482	6.503
AVERAGE UNIT OVER/(UNDER) RECOVERY 27/07/2018 - 10/08/2018	5.194	6.283	9.372	9.583	12.987

R/\$ EXCHANGE RATE - (R/\$13.8843 - 10/08/2018)

EXCHANGE RATE USED IN BASIC FUEL PRICE



INTERNATIONAL PRODUCT PRICES OF BASKET USED IN BASIC FUEL PRICE



BASIC FUEL PRICE IN SA CENTS PER LITRE

