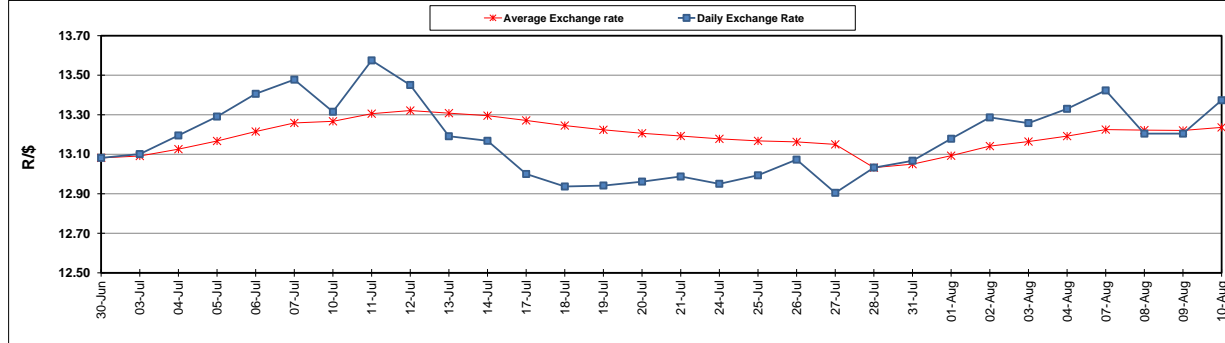


	PETROL 95 ULP	PETROL 93 ULP & LRP	DIESEL 0.05%	DIESEL 0.005%	ILL. PAR.
GAUTENG PUMP PRICE (SA c/l) AS FROM 02/08/2017	1 305.000	1 282.000	-	-	-
WHOLESALE PRICE (SA c/l) AS FROM 02/08/2017	-	-	1 126.330	1 131.730	683.088
SINGLE NATIONAL MAXIMUM RETAIL PRICE	-	-	-	-	876.000
BASIC FUEL PRICE - 10/08/2017 (SA c/l)	590.110	573.709	568.312	574.906	571.431
PRESS RELEASE CONTRIBUTION TO BFP 02/08/2017 - 10/08/2017 (SA c/l)	523.670	510.670	514.630	520.030	512.128
UNIT OVER/(UNDER) RECOVERY (SA c/l) - 10/08/2017	(66.440)	(63.039)	(53.682)	(54.876)	(59.303)
AVERAGE BASIC FUEL PRICE 28/07/2017 - 10/08/2017	580.618	565.070	562.229	568.932	562.755
AVERAGE UNIT OVER/(UNDER) RECOVERY 28/07/2017- 10/08/2017	(62.648)	(60.100)	(56.299)	(57.902)	(58.427)

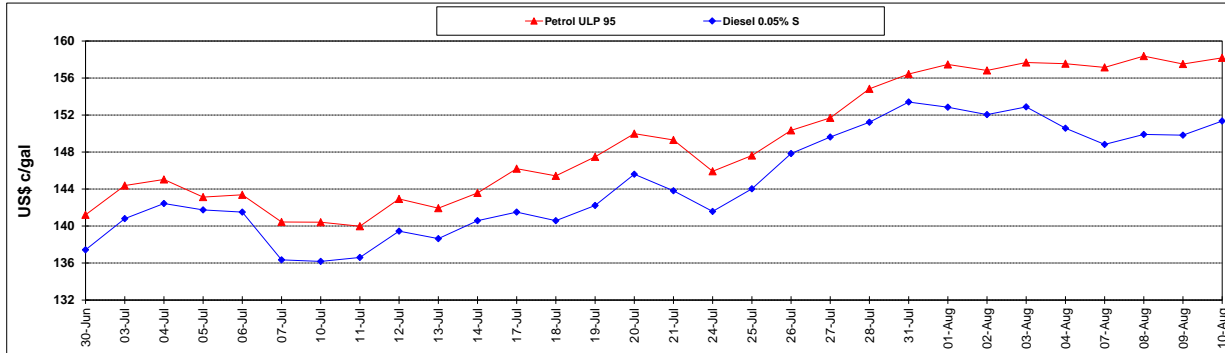
ANALYSIS MOVEMENT OF AVERAGE OVER/(UNDER) RECOVERY					
	PETROL 95	PETROL 93	DIESEL 0.05%	DIESEL 0.005%	ILL. PAR.
- MOVEMENT IN INTERNATIONAL PRODUCT PRICES	(58.884)	(56.437)	(52.654)	(54.214)	(54.779)
- MOVEMENT IN EXCHANGE RATE	(3.764)	(3.663)	(3.645)	(3.688)	(3.648)
AVERAGE UNIT OVER/(UNDER) RECOVERY 28/07/2017 - 10/08/2017	(62.648)	(60.100)	(56.299)	(57.902)	(58.427)

R/\$ EXCHANGE RATE - (R/\$ 13.37535- 10/08/2017)

EXCHANGE RATE USED IN BASIC FUEL PRICE



INTERNATIONAL PRODUCT PRICES OF BASKET USED IN BASIC FUEL PRICE



BASIC FUEL PRICE IN SA CENTS PER LITRE

