

## UPDATE OF THE BASIC FUEL PRICE

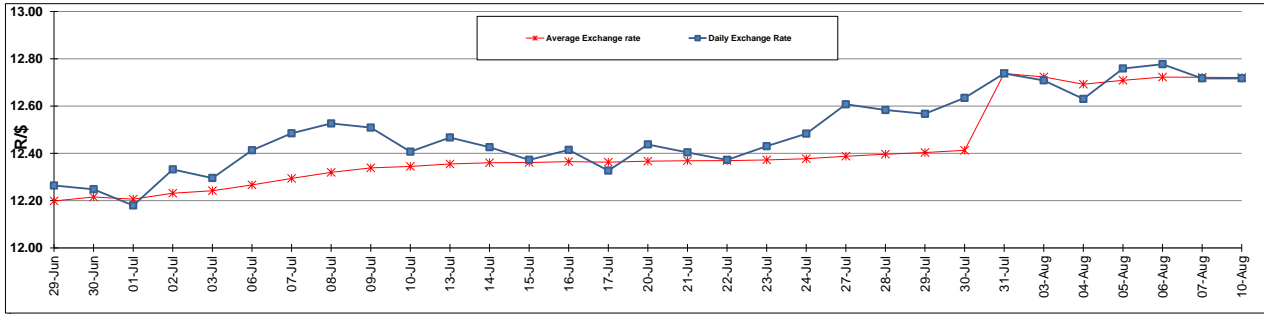
	PETROL 95 ULP	PETROL 93 ULP & LRP	DIESEL 0.05%	DIESEL 0.005%	ILL. PAR.
GAUTENG PUMP PRICE (SA c/l) AS FROM 05/08/2015	1,326.000	1,301.000	-	-	-
WHOLESALE PRICE (SA c/l) AS FROM 05/08/2015	-	-	1,094.970	1,100.370	716.828
SINGLE NATIONAL MAXIMUM RETAIL PRICE	-	-	-	-	921.000
BASIC FUEL PRICE - 10/08/2015 (SA c/l)	608.892	586.549	529.795	538.309	516.088
PRESS RELEASE CONTRIBUTION TO BFP 05/08/2015 - 10/08/2015 (SA c/l)	652.470	637.470	566.630	572.030	559.128
UNIT OVER/(UNDER) RECOVERY (SA c/l) - 10/08/2015	43.578	50.921	36.835	33.721	43.040
AVERAGE BASIC FUEL PRICE 31/07/2015 - 10/08/2015	613.213	590.517	528.447	536.510	517.264
AVERAGE UNIT OVER/(UNDER) RECOVERY 31/07/2015 - 10/08/2015	61.191	68.888	70.754	67.234	71.864

## ANALYSIS MOVEMENT OF AVERAGE OVER/(UNDER) RECOVERY

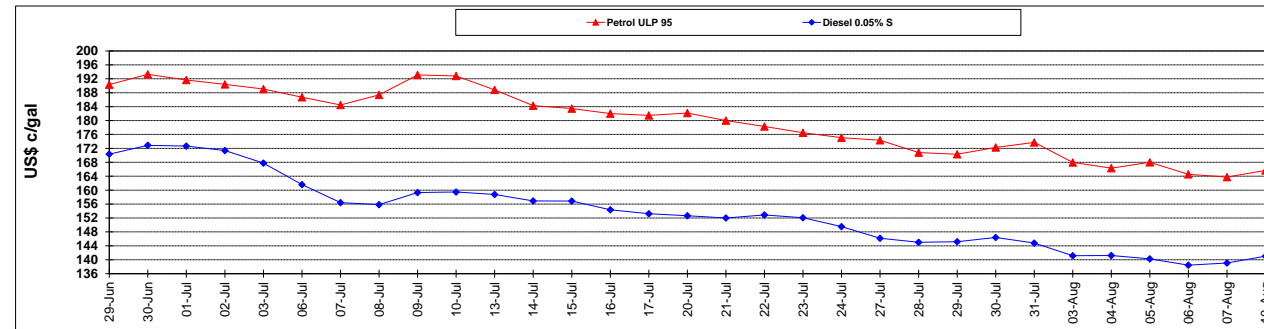
	PETROL 95	PETROL 93	DIESEL 0.05%	DIESEL 0.005%	ILL. PAR.
- MOVEMENT IN INTERNATIONAL PRODUCT PRICES	80.536	87.516	87.425	84.159	88.182
- MOVEMENT IN EXCHANGE RATE	(19.345)	(18.629)	(16.671)	(16.925)	(16.318)
AVERAGE UNIT OVER/(UNDER) RECOVERY 31/07/2015 - 10/08/2015	61.191	68.888	70.754	67.234	71.864

**R/\$ EXCHANGE RATE - (R/\$ 12.7170 - 10/08/2015)**

## EXCHANGE RATE USED IN BASIC FUEL PRICE



## INTERNATIONAL PRODUCT PRICES OF BASKET USED IN BASIC FUEL PRICE



## BASIC FUEL PRICE IN SA CENTS PER LITRE

