

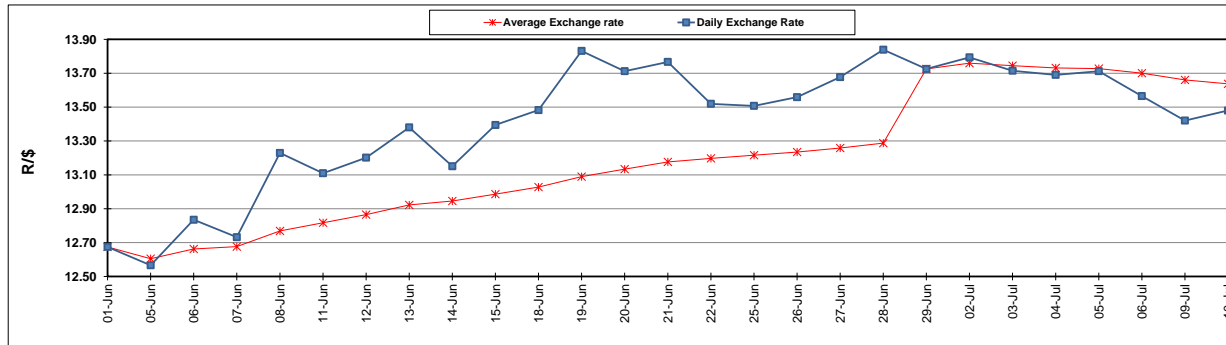
	PETROL 95 ULP	PETROL 93 ULP & LRP	DIESEL 0.05%	DIESEL 0.005%	ILL. PAR.
GAUTENG PUMP PRICE (SA c/l) AS FROM 04/07/2018	1 602.000	1 581.000	-	-	-
WHOLESALE PRICE (SA c/l) AS FROM 04/07/2018	-	-	1 444.830	1 449.230	949.088
SINGLE NATIONAL MAXIMUM RETAIL PRICE	-	-	-	-	1 228.000
BASIC FUEL PRICE - 10/07/2018 (SA c/l)	769.907	760.418	787.716	792.903	803.946
PRESS RELEASE CONTRIBUTION TO BFP 04/07/2018 - 10/07/2018 (SA c/l)	750.070	739.070	771.630	776.030	776.128
UNIT OVER/(UNDER) RECOVERY - 10/07/2018 (SA c/l)	(19.837)	(21.348)	(16.086)	(16.873)	(27.818)
AVERAGE BASIC FUEL PRICE 29/06/2018 - 10/07/2018	768.808	758.130	785.611	790.634	800.198
AVERAGE UNIT OVER/(UNDER) RECOVERY 29/06/2018 - 10/07/2018	(27.363)	(29.185)	(23.731)	(23.604)	(32.320)

ANALYSIS MOVEMENT OF AVERAGE OVER/(UNDER) RECOVERY

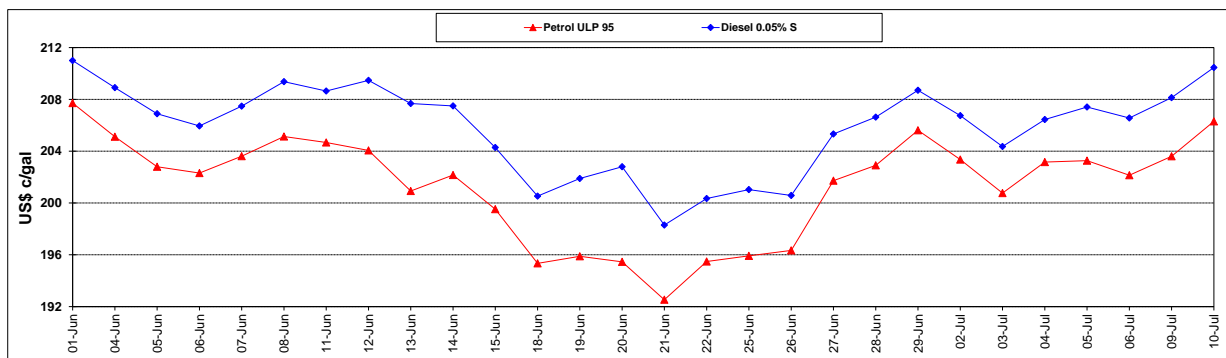
	PETROL 95	PETROL 93	DIESEL 0.05%	DIESEL 0.005%	ILL. PAR.
- MOVEMENT IN INTERNATIONAL PRODUCT PRICES	(7.604)	(9.700)	(3.540)	(3.284)	(11.754)
- MOVEMENT IN EXCHANGE RATE	(19.759)	(19.485)	(20.191)	(20.320)	(20.566)
AVERAGE UNIT OVER/(UNDER) RECOVERY 29/06/2018 - 10/07/2018	(27.363)	(29.185)	(23.731)	(23.604)	(32.320)

R/\$ EXCHANGE RATE - (R/\$13.4800 - 10/07/2018)

EXCHANGE RATE USED IN BASIC FUEL PRICE



INTERNATIONAL PRODUCT PRICES OF BASKET USED IN BASIC FUEL PRICE



BASIC FUEL PRICE IN SA CENTS PER LITRE

