

UPDATE OF THE BASIC FUEL PRICE

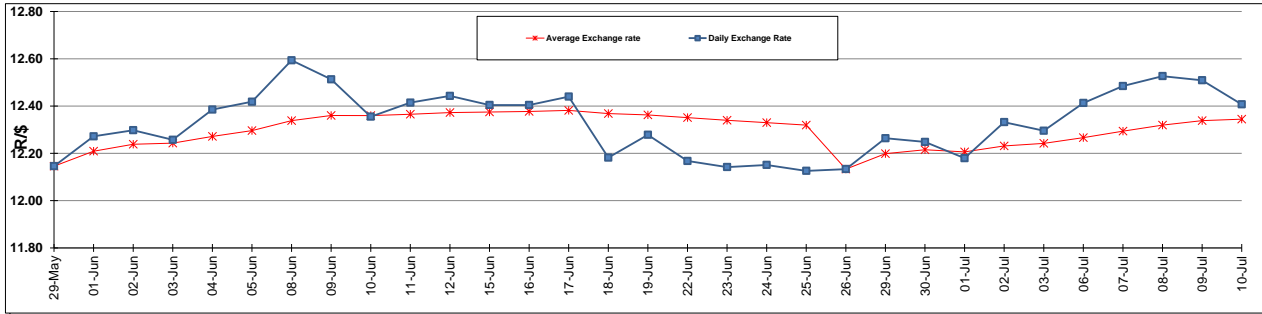
	PETROL 95 ULP	PETROL 93 ULP & LRP	DIESEL 0.05%	DIESEL 0.005%	ILL. PAR.
GAUTENG PUMP PRICE (SA c/l) AS FROM 01/07/2015	1,377.000	1,352.000	-	-	-
WHOLESALE PRICE (SA c/l) AS FROM 01/07/2015	-	-	1,170.790	1,174.190	786.828
SINGLE NATIONAL MAXIMUM RETAIL PRICE	-	-	-	-	1,014.000
BASIC FUEL PRICE - 10/07/2015 (SA c/l)	677.895	660.122	571.655	576.150	558.114
PRESS RELEASE CONTRIBUTION TO BFP 01/07/2015 - 10/07/2015 (SA c/l)	703.650	688.650	642.630	646.030	629.128
UNIT OVER/(UNDER) RECOVERY (SA c/l) - 10/07/2015	25.755	28.528	70.975	69.880	71.014
AVERAGE BASIC FUEL PRICE 26/06/2015 - 10/07/2015	666.780	651.019	589.800	595.958	579.109
AVERAGE UNIT OVER/(UNDER) RECOVERY 26/06/2015 - 10/07/2015	25.688	25.631	51.739	48.981	48.383

ANALYSIS MOVEMENT OF AVERAGE OVER/(UNDER) RECOVERY

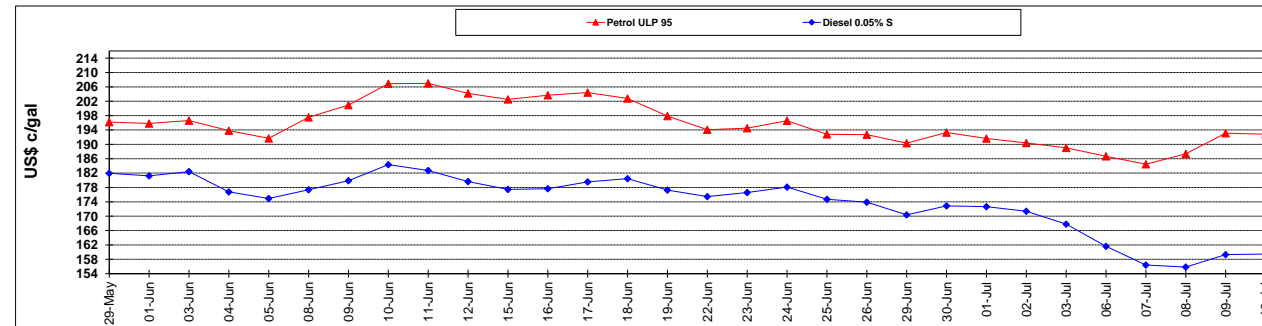
	PETROL 95	PETROL 93	DIESEL 0.05%	DIESEL 0.005%	ILL. PAR.
- MOVEMENT IN INTERNATIONAL PRODUCT PRICES	27.049	26.960	52.943	50.198	49.565
- MOVEMENT IN EXCHANGE RATE	(1.361)	(1.329)	(1.204)	(1.217)	(1.182)
AVERAGE UNIT OVER/(UNDER) RECOVERY 26/06/2015 - 10/07/2015	25.688	25.631	51.739	48.981	48.383

R/\$ EXCHANGE RATE - (R/\$ 12.4071 - 10/07/2015)

EXCHANGE RATE USED IN BASIC FUEL PRICE



INTERNATIONAL PRODUCT PRICES OF BASKET USED IN BASIC FUEL PRICE



BASIC FUEL PRICE IN SA CENTS PER LITRE

