

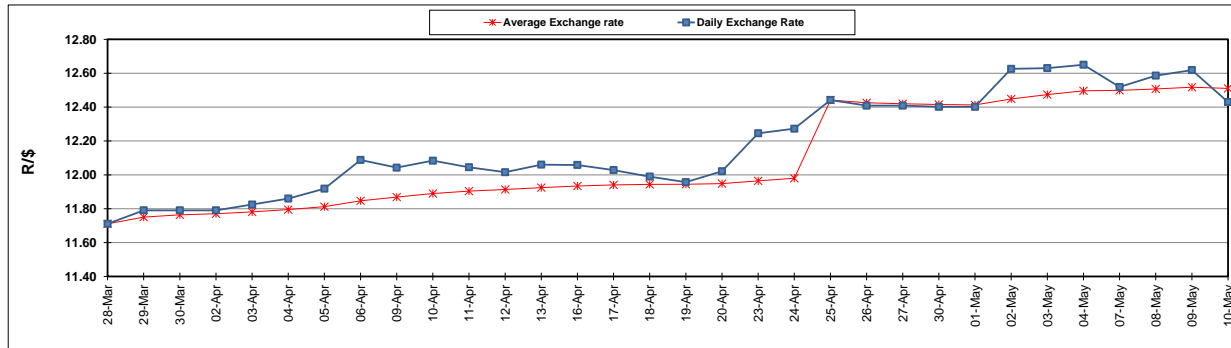
	PETROL 95 ULP	PETROL 93 ULP & LRP	DIESEL 0.05%	DIESEL 0.005%	ILL. PAR.
GAUTENG PUMP PRICE (SA c/l) AS FROM 02/05/2018	1 497.000	1 472.000	-	-	-
WHOLESALE PRICE (SA c/l) AS FROM 02/05/2018	-	-	1 333.830	1 338.230	845.088
SINGLE NATIONAL MAXIMUM RETAIL PRICE	-	-	-	-	1 089.000
BASIC FUEL PRICE - 10/05/2018 (SA c/l)	717.025	704.509	731.793	737.970	740.500
PRESS RELEASE CONTRIBUTION TO BFP 02/05/2018 - 10/05/2018 (SA c/l)	645.070	630.070	660.630	665.030	672.128
UNIT OVER/(UNDER) RECOVERY - 10/05/2018 (SA c/l)	(71.955)	(74.439)	(71.163)	(72.940)	(68.372)
AVERAGE BASIC FUEL PRICE 25/04/2018 - 10/05/2018	697.703	684.468	717.833	723.599	730.543
AVERAGE UNIT OVER/(UNDER) RECOVERY 25/04/2018 - 10/05/2018	(73.050)	(74.815)	(81.787)	(82.736)	(80.082)

ANALYSIS MOVEMENT OF AVERAGE OVER/(UNDER) RECOVERY

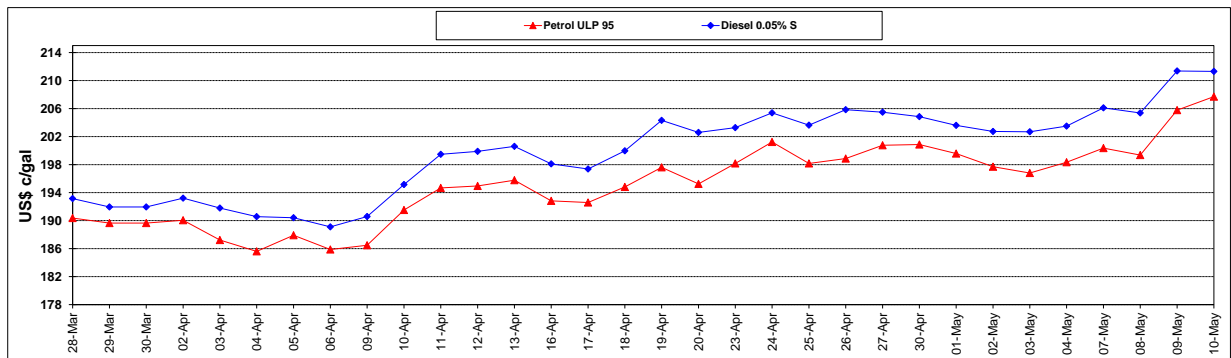
	PETROL 95	PETROL 93	DIESEL 0.05%	DIESEL 0.005%	ILL. PAR.
- MOVEMENT IN INTERNATIONAL PRODUCT PRICES	(43.469)	(45.795)	(51.352)	(52.057)	(49.109)
- MOVEMENT IN EXCHANGE RATE	(29.581)	(29.020)	(30.434)	(30.679)	(30.973)
AVERAGE UNIT OVER/(UNDER) RECOVERY 25/04/2018 - 10/05/2018	(73.050)	(74.815)	(81.787)	(82.736)	(80.082)

R/\$ EXCHANGE RATE - (R/\$12.4295 - 10/05/2018)

EXCHANGE RATE USED IN BASIC FUEL PRICE



INTERNATIONAL PRODUCT PRICES OF BASKET USED IN BASIC FUEL PRICE



BASIC FUEL PRICE IN SA CENTS PER LITRE

