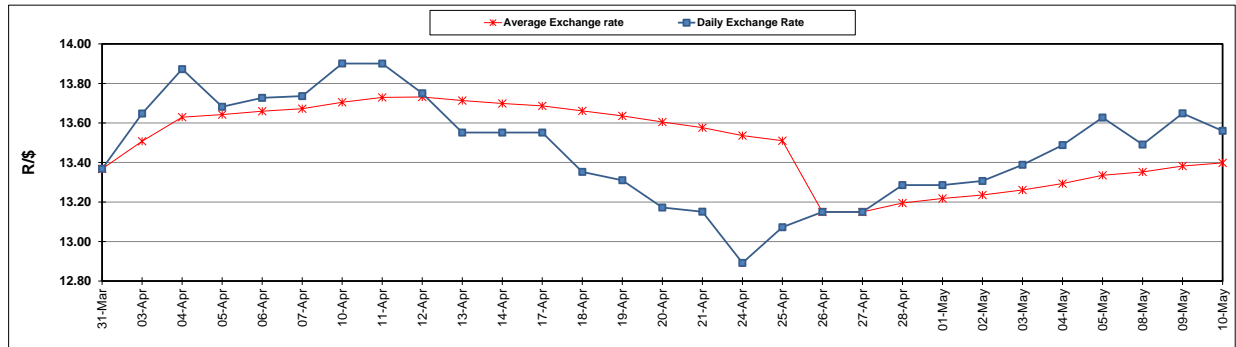


	PETROL 95 ULP	PETROL 93 ULP & LRP	DIESEL 0.05%	DIESEL 0.005%	ILL. PAR.
GAUTENG PUMP PRICE (SA c/l) AS FROM 03/05/2017	1 379.000	1 357.000	-	-	-
WHOLESALE PRICE (SA c/l) AS FROM 03/05/2017	-	-	1 180.330	1 184.730	736.088
SINGLE NATIONAL MAXIMUM RETAIL PRICE	-	-	-	-	947.000
BASIC FUEL PRICE - 10/05/2017 (SA c/l)	560.549	543.905	538.220	541.317	531.473
PRESS RELEASE CONTRIBUTION TO BFP 03/05/2017 - 10/05/2017 (SA c/l)	597.670	585.670	568.630	573.030	565.128
UNIT OVER/(UNDER) RECOVERY (SA c/l) - 10/05/2017	37.121	41.765	30.410	31.713	33.655
AVERAGE BASIC FUEL PRICE 26/04/2017 - 10/05/2017	558.260	541.701	536.116	539.776	530.095
AVERAGE UNIT OVER/(UNDER) RECOVERY 26/04/2017- 10/05/2017	17.138	21.696	18.878	18.709	19.579

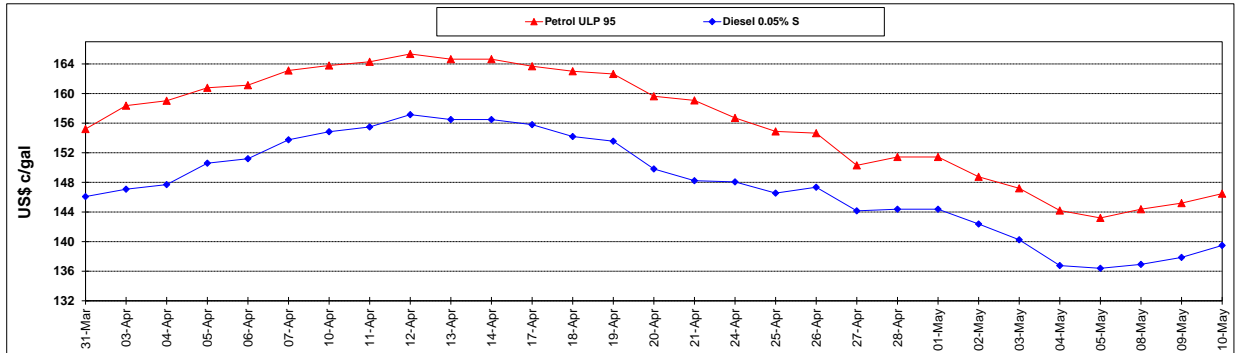
ANALYSIS MOVEMENT OF AVERAGE OVER/(UNDER) RECOVERY					
	PETROL 95	PETROL 93	DIESEL 0.05%	DIESEL 0.005%	ILL. PAR.
- MOVEMENT IN INTERNATIONAL PRODUCT PRICES	12.458	17.156	14.384	14.185	15.135
- MOVEMENT IN EXCHANGE RATE	4.679	4.540	4.494	4.524	4.443
AVERAGE UNIT OVER/(UNDER) RECOVERY 26/04/2017 - 10/05/2017	17.138	21.696	18.878	18.709	19.579

R/\$ EXCHANGE RATE - (R/\$ 13.5600 - 10/05/2017)

EXCHANGE RATE USED IN BASIC FUEL PRICE



INTERNATIONAL PRODUCT PRICES OF BASKET USED IN BASIC FUEL PRICE



BASIC FUEL PRICE IN SA CENTS PER LITRE

