

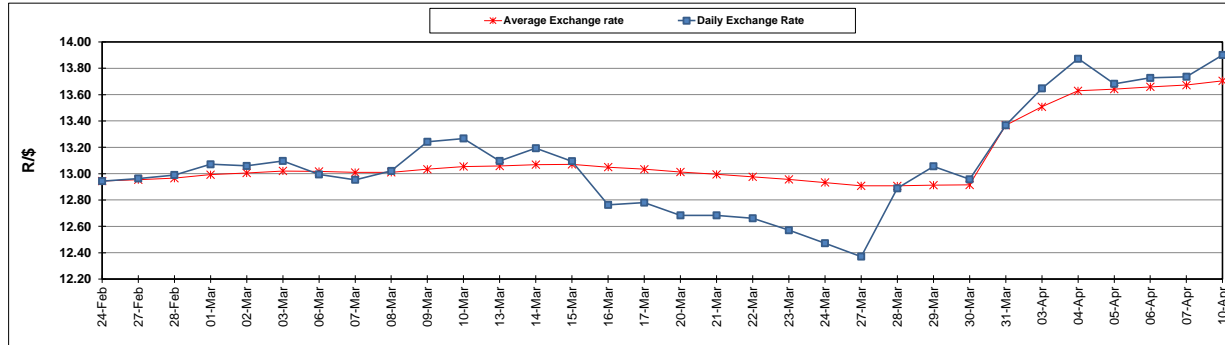
	PETROL 95 ULP	PETROL 93 ULP & LRP	DIESEL 0.05%	DIESEL 0.005%	ILL. PAR.
GAUTENG PUMP PRICE (SA c/l) AS FROM 05/04/2017	1 330.000	1 308.000	-	-	-
WHOLESALE PRICE (SA c/l) AS FROM 05/04/2017	-	-	1 150.330	1 152.730	702.088
SINGLE NATIONAL MAXIMUM RETAIL PRICE	-	-	-	-	901.000
BASIC FUEL PRICE - 10/04/2017 (SA c/l)	635.602	618.608	605.243	609.260	601.425
PRESS RELEASE CONTRIBUTION TO BFP 05/04/2017 - 10/04/2017 (SA c/l)	548.670	536.670	538.630	541.030	531.128
UNIT OVER/(UNDER) RECOVERY (SA c/l) - 10/04/2017	(86.932)	(81.938)	(66.613)	(68.230)	(70.297)
AVERAGE BASIC FUEL PRICE 31/03/2017 - 10/04/2017	614.045	596.855	580.233	584.273	578.691
AVERAGE UNIT OVER/(UNDER) RECOVERY 31/03/2017- 10/04/2017	(37.860)	(33.527)	(20.174)	(21.815)	(25.277)

ANALYSIS MOVEMENT OF AVERAGE OVER/(UNDER) RECOVERY

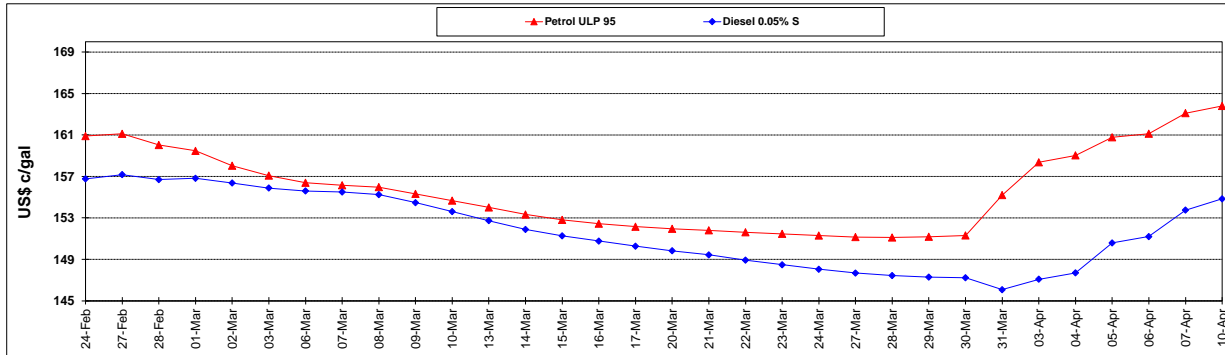
	PETROL 95	PETROL 93	DIESEL 0.05%	DIESEL 0.005%	ILL. PAR.
- MOVEMENT IN INTERNATIONAL PRODUCT PRICES	(2.465)	0.877	13.273	11.866	8.081
- MOVEMENT IN EXCHANGE RATE	(35.396)	(34.405)	(33.447)	(33.680)	(33.358)
AVERAGE UNIT OVER/(UNDER) RECOVERY 31/03/2017 - 10/04/2017	(37.860)	(33.527)	(20.174)	(21.815)	(25.277)

R/\$ EXCHANGE RATE - (R/\$ 13.9008 - 10/04/2017)

EXCHANGE RATE USED IN BASIC FUEL PRICE



INTERNATIONAL PRODUCT PRICES OF BASKET USED IN BASIC FUEL PRICE



BASIC FUEL PRICE IN SA CENTS PER LITRE

