

UPDATE OF THE BASIC FUEL PRICE

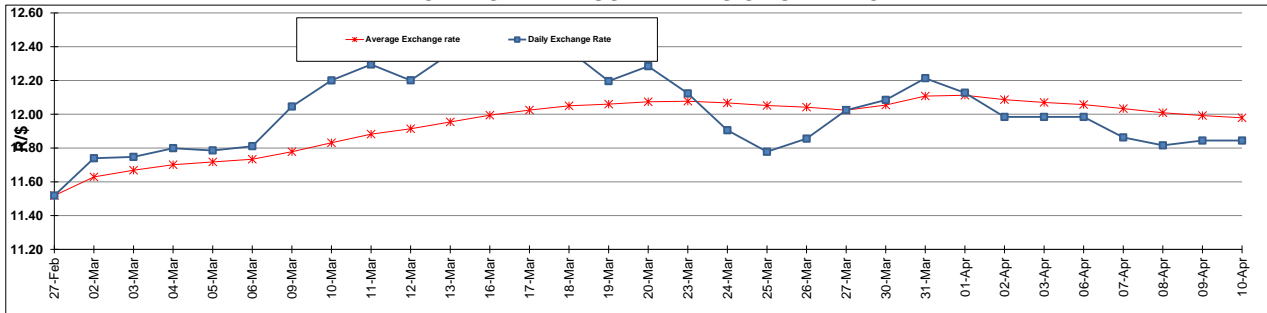
	PETROL 95 ULP	PETROL 93 ULP & LRP	DIESEL 0.05%	DIESEL 0.005%	ILL. PAR.
GAUTENG PUMP PRICE (SA c/l) AS FROM 03/04/2015	1,289.000	1,261.000	-	-	-
WHOLESALE PRICE (SA c/l) AS FROM 03/04/2015	-	-	1,122.790	1,129.190	743.828
SINGLE NATIONAL MAXIMUM RETAIL PRICE	-	-	-	-	957.000
BASIC FUEL PRICE - 10/04/2015 (SA c/l)	563.957	553.041	553.372	560.318	546.113
PRESS RELEASE CONTRIBUTION TO BFP 10/04/2015 - 10/04/2015 (SA c/l)	615.650	597.650	594.630	601.030	586.128
UNIT OVER/(UNDER) RECOVERY (SA c/l) - 10/04/2015	51.693	44.609	41.258	40.712	40.015
AVERAGE BASIC FUEL PRICE 27/03/2015 - 10/04/2015	576.178	561.353	560.328	566.457	555.870
AVERAGE UNIT OVER/(UNDER) RECOVERY 27/03/2015 - 10/04/2015	17.817	16.278	23.393	23.118	24.258

ANALYSIS MOVEMENT OF AVERAGE OVER/(UNDER) RECOVERY

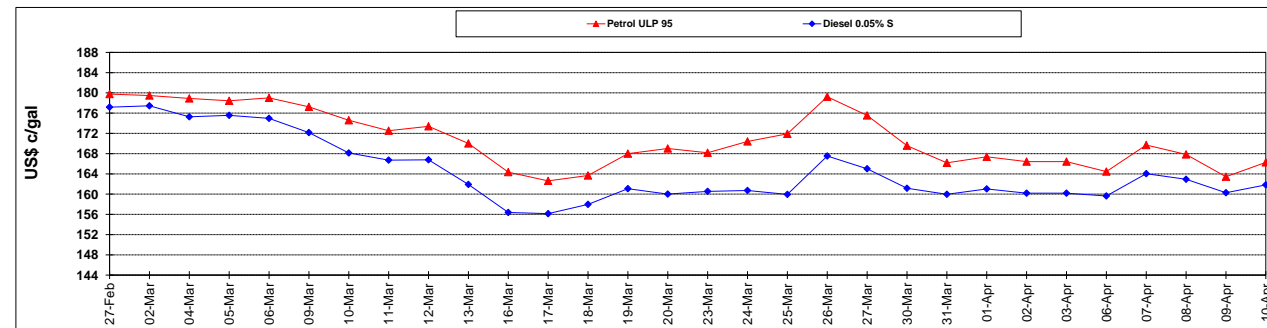
	PETROL 95	PETROL 93	DIESEL 0.05%	DIESEL 0.005%	ILL. PAR.
- MOVEMENT IN INTERNATIONAL PRODUCT PRICES	14.772	13.313	20.432	20.125	21.321
- MOVEMENT IN EXCHANGE RATE	3.045	2.966	2.961	2.993	2.937
AVERAGE UNIT OVER/(UNDER) RECOVERY 27/03/2015 - 10/04/2015	17.817	16.278	23.393	23.118	24.258

R/\$ EXCHANGE RATE - (R/\$ 12.0007 - 10/04/2015)

EXCHANGE RATE USED IN BASIC FUEL PRICE



INTERNATIONAL PRODUCT PRICES OF BASKET USED IN BASIC FUEL PRICE



BASIC FUEL PRICE IN SA CENTS PER LITRE

