

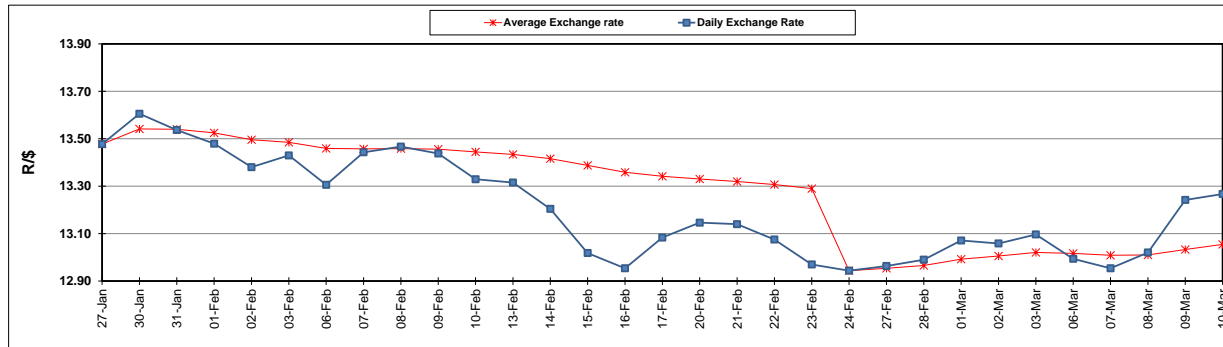
	PETROL 95 ULP	PETROL 93 ULP & LRP	DIESEL 0.05%	DIESEL 0.005%	ILL. PAR.
GAUTENG PUMP PRICE (SA c/l) AS FROM 01/03/2017	1 354.000	1 330.000	-	-	-
WHOLESALE PRICE (SA c/l) AS FROM 01/03/2017	-	-	1 160.830	1 163.230	750.588
SINGLE NATIONAL MAXIMUM RETAIL PRICE	-	-	-	-	966.000
BASIC FUEL PRICE - 10/03/2017 (SA c/l)	554.010	539.251	545.618	548.272	538.788
PRESS RELEASE CONTRIBUTION TO BFP 01/03/2017 - 10/03/2017 (SA c/l)	612.870	598.870	588.630	591.030	583.128
UNIT OVER/(UNDER) RECOVERY (SA c/l) - 10/03/2017	58.860	59.619	43.012	42.758	44.340
AVERAGE BASIC FUEL PRICE 24/02/2017 - 10/03/2017	567.783	556.089	566.859	569.803	558.805
AVERAGE UNIT OVER/(UNDER) RECOVERY 24/02/2017- 10/03/2017	47.269	44.963	22.317	21.773	26.505

### ANALYSIS MOVEMENT OF AVERAGE OVER/(UNDER) RECOVERY

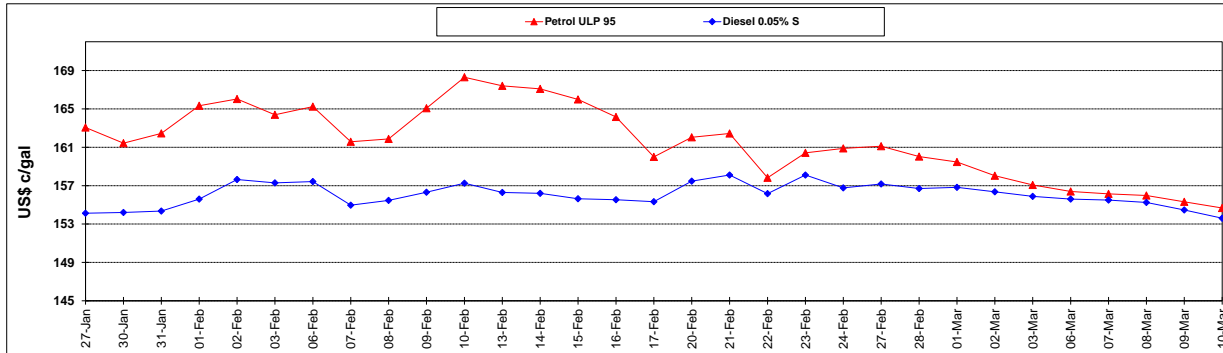
	PETROL 95	PETROL 93	DIESEL 0.05%	DIESEL 0.005%	ILL. PAR.
- MOVEMENT IN INTERNATIONAL PRODUCT PRICES	50.949	48.567	25.990	25.465	30.126
- MOVEMENT IN EXCHANGE RATE	(3.680)	(3.604)	(3.674)	(3.693)	(3.621)
AVERAGE UNIT OVER/(UNDER) RECOVERY 24/02/2017 - 10/03/2017	47.269	44.963	22.317	21.773	26.505

R/\$ EXCHANGE RATE - (R/\$ 13.2673 - 10/03/2017)

### EXCHANGE RATE USED IN BASIC FUEL PRICE



### INTERNATIONAL PRODUCT PRICES OF BASKET USED IN BASIC FUEL PRICE



### BASIC FUEL PRICE IN SA CENTS PER LITRE

