

UPDATE OF THE BASIC FUEL PRICE

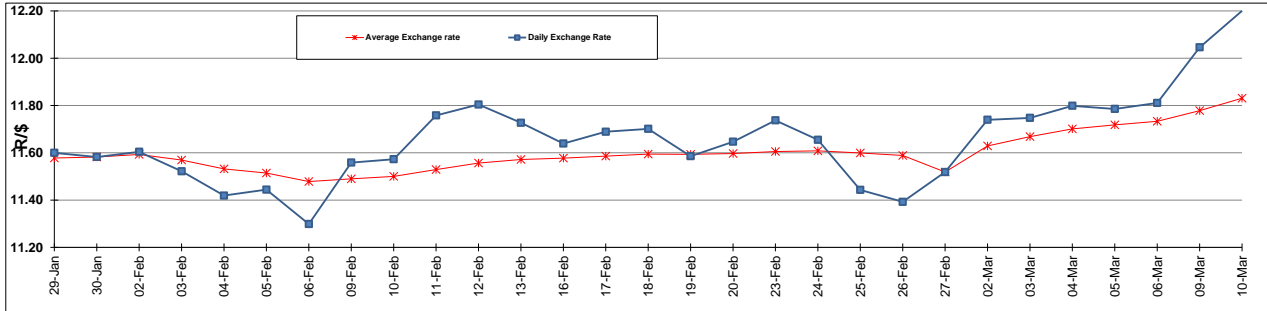
	PETROL 95 ULP	PETROL 93 ULP & LRP	DIESEL 0.05%	DIESEL 0.005%	ILL. PAR.
GAUTENG PUMP PRICE (SA c/l) AS FROM 04/03/2015	1,127.000	1,105.000	-	-	-
WHOLESALE PRICE (SA c/l) AS FROM 04/03/2015	-	-	1,000.090	1,004.490	718.928
SINGLE NATIONAL MAXIMUM RETAIL PRICE	-	-	-	-	931.000
BASIC FUEL PRICE - 10/03/2015 (SA c/l)	614.099	596.426	597.117	602.166	583.948
PRESS RELEASE CONTRIBUTION TO BFP 04/03/2015 - 10/03/2015 (SA c/l)	536.250	524.250	554.630	559.030	564.128
UNIT OVER/(UNDER) RECOVERY (SA c/l) - 10/03/2015	(77.849)	(72.176)	(42.487)	(43.136)	(19.820)
AVERAGE BASIC FUEL PRICE 27/02/2015 - 10/03/2015	607.581	590.925	599.439	604.410	585.630
AVERAGE UNIT OVER/(UNDER) RECOVERY 27/02/2015 - 10/03/2015	(107.331)	(102.675)	(72.559)	(73.130)	(48.877)

ANALYSIS MOVEMENT OF AVERAGE OVER/(UNDER) RECOVERY

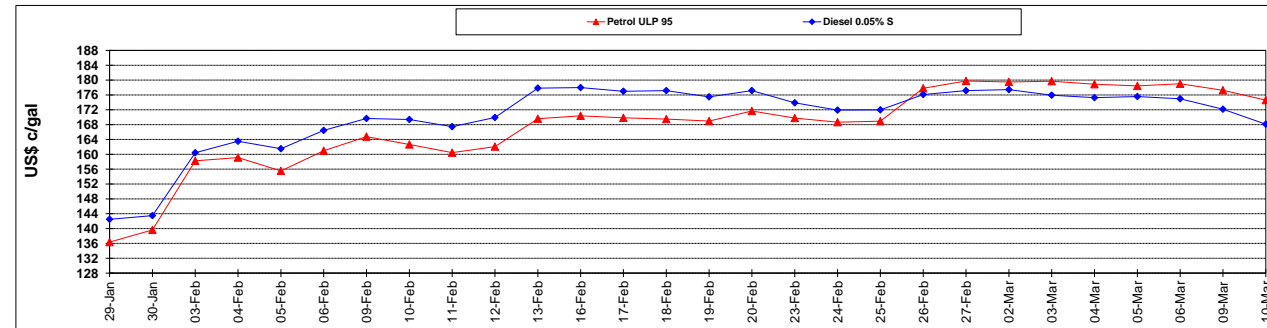
	PETROL 95	PETROL 93	DIESEL 0.05%	DIESEL 0.005%	ILL. PAR.
- MOVEMENT IN INTERNATIONAL PRODUCT PRICES	(94.908)	(90.593)	(60.303)	(60.772)	(36.903)
- MOVEMENT IN EXCHANGE RATE	(12.423)	(12.082)	(12.256)	(12.358)	(11.974)
AVERAGE UNIT OVER/(UNDER) RECOVERY 27/02/2015 - 10/03/2015	(107.331)	(102.675)	(72.559)	(73.130)	(48.877)

R/\$ EXCHANGE RATE - (R/\$ 12.2004 - 10/03/2015)

EXCHANGE RATE USED IN BASIC FUEL PRICE



INTERNATIONAL PRODUCT PRICES OF BASKET USED IN BASIC FUEL PRICE



BASIC FUEL PRICE IN SA CENTS PER LITRE

