

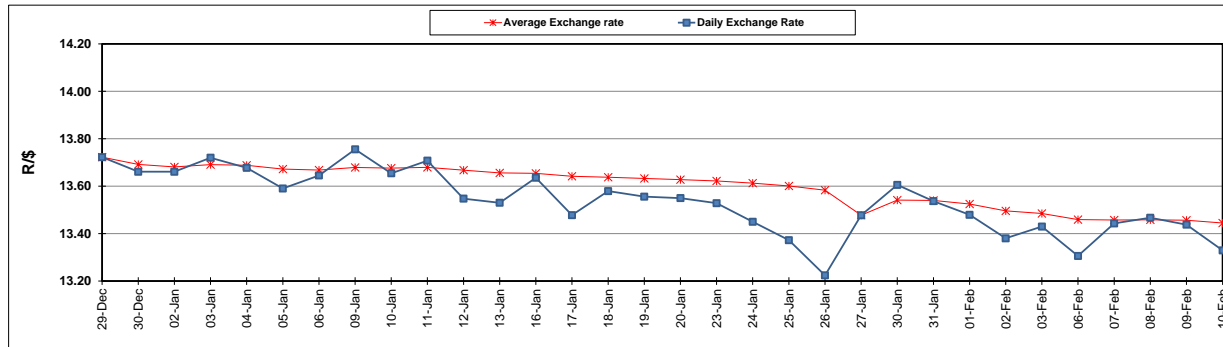
	PETROL 95 ULP	PETROL 93 ULP & LRP	DIESEL 0.05%	DIESEL 0.005%	ILL. PAR.
GAUTENG PUMP PRICE (SA c/l) AS FROM 01/02/2017	1 362.000	1 338.000	-	-	-
WHOLESALE PRICE (SA c/l) AS FROM 01/02/2017	-	-	1 162.830	1 165.230	758.588
SINGLE NATIONAL MAXIMUM RETAIL PRICE	-	-	-	-	976.000
BASIC FUEL PRICE - 10/02/2017 (SA c/l)	628.284	613.000	592.062	594.944	586.519
PRESS RELEASE CONTRIBUTION TO BFP 01/02/2017 - 10/02/2017 (SA c/l)	620.870	606.870	590.630	593.030	591.128
UNIT OVER/(UNDER) RECOVERY (SA c/l) - 10/02/2017	(7.414)	(6.130)	(1.432)	(1.914)	4.609
AVERAGE BASIC FUEL PRICE 27/01/2017 - 10/02/2017	617.429	602.084	590.983	593.236	584.647
AVERAGE UNIT OVER/(UNDER) RECOVERY 27/01/2017- 10/02/2017	(4.468)	(3.123)	(6.081)	(5.934)	1.845

ANALYSIS MOVEMENT OF AVERAGE OVER/(UNDER) RECOVERY

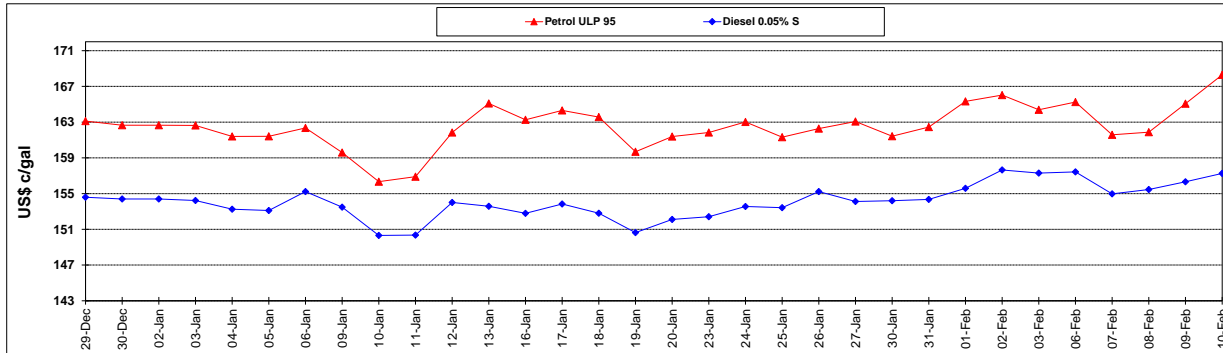
	PETROL 95	PETROL 93	DIESEL 0.05%	DIESEL 0.005%	ILL. PAR.
- MOVEMENT IN INTERNATIONAL PRODUCT PRICES	(10.819)	(9.316)	(12.159)	(12.035)	(4.169)
- MOVEMENT IN EXCHANGE RATE	6.351	6.193	6.079	6.102	6.014
AVERAGE UNIT OVER/(UNDER) RECOVERY 27/01/2017 - 10/02/2017	(4.468)	(3.123)	(6.081)	(5.934)	1.845

R/\$ EXCHANGE RATE - (R/\$ 13.3293 - 10/02/2017)

EXCHANGE RATE USED IN BASIC FUEL PRICE



INTERNATIONAL PRODUCT PRICES OF BASKET USED IN BASIC FUEL PRICE



BASIC FUEL PRICE IN SA CENTS PER LITRE

