

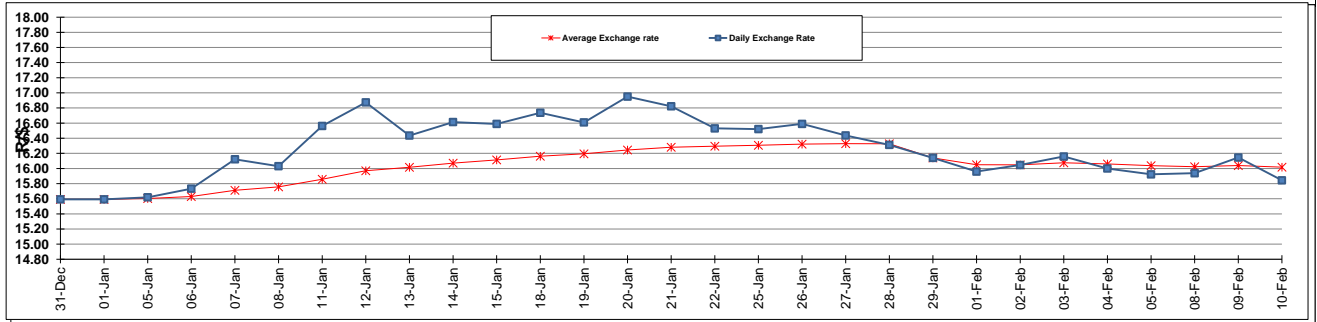
	PETROL 95 ULP	PETROL 93 ULP & LRP	DIESEL 0.05%	DIESEL 0.005%	ILL. PAR.
GAUTENG PUMP PRICE (SA c/l) AS FROM 03/02/2016	1 243.000	1 215.000	-	-	-
WHOLESALE PRICE (SA c/l) AS FROM 03/02/2016	-	-	943.170	947.570	588.028
SINGLE NATIONAL MAXIMUM RETAIL PRICE	-	-	-	-	749.000
BASIC FUEL PRICE - 10/02/2016 (SA c/l)	447.026	432.670	407.874	412.580	421.190
PRESS RELEASE CONTRIBUTION TO BFP 03/02/2016 - 10/02/2016 (SA c/l)	556.970	538.970	412.630	417.030	428.128
UNIT OVER/(UNDER) RECOVERY (SA c/l) - 10/02/2016	109.944	106.300	4.756	4.450	6.938
AVERAGE BASIC FUEL PRICE 29/01/2016 - 10/02/2016	506.932	485.707	436.557	440.922	456.453
AVERAGE UNIT OVER/(UNDER) RECOVERY 29/01/2016 - 10/02/2016	48.038	51.263	(3.260)	(2.892)	(8.658)

ANALYSIS MOVEMENT OF AVERAGE OVER/(UNDER) RECOVERY

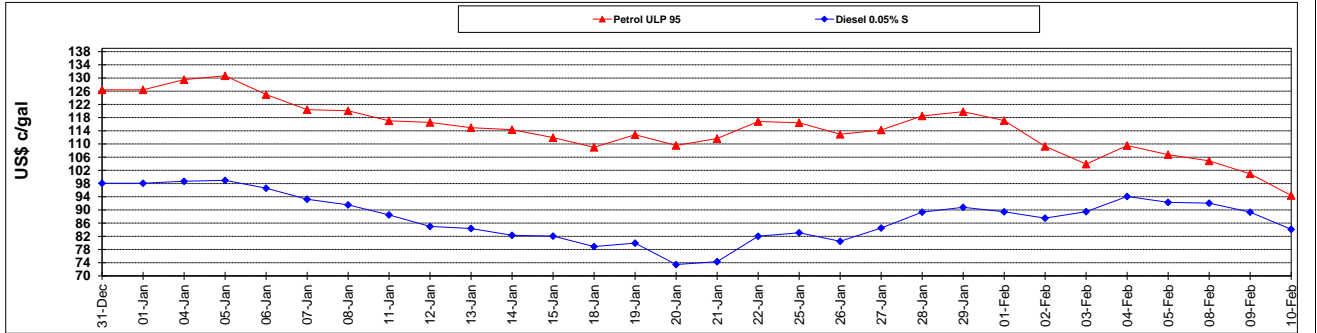
	PETROL 95	PETROL 93	DIESEL 0.05%	DIESEL 0.005%	ILL. PAR.
- MOVEMENT IN INTERNATIONAL PRODUCT PRICES	38.214	41.850	(11.720)	(11.437)	(17.504)
- MOVEMENT IN EXCHANGE RATE	9.824	9.413	8.460	8.545	8.846
AVERAGE UNIT OVER/(UNDER) RECOVERY 29/01/2016 - 10/02/2016	48.038	51.263	(3.260)	(2.892)	(8.658)

R/\$ EXCHANGE RATE - (R/\$ 15.8441 - 10/02/2016)

EXCHANGE RATE USED IN BASIC FUEL PRICE



INTERNATIONAL PRODUCT PRICES OF BASKET USED IN BASIC FUEL PRICE



BASIC FUEL PRICE IN SA CENTS PER LITRE

