

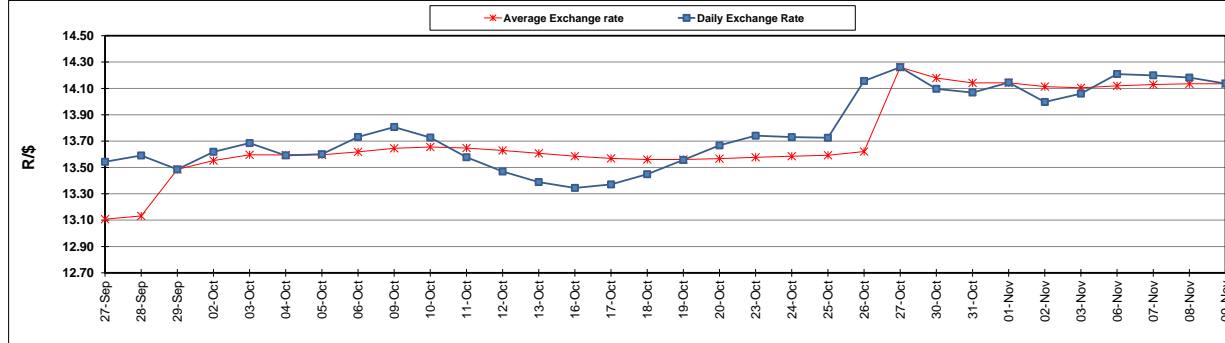
	PETROL 95 ULP	PETROL 93 ULP & LRP	DIESEL 0.05%	DIESEL 0.005%	ILL. PAR.
GAUTENG PUMP PRICE (SA c/l) AS FROM 01/11/2017	1 405.000	1 378.000	-	-	-
WHOLESALE PRICE (SA c/l) AS FROM 01/11/2017	-	-	1 235.330	1 244.730	792.088
SINGLE NATIONAL MAXIMUM RETAIL PRICE	-	-	-	-	1 021.000
BASIC FUEL PRICE - 09/11/2017 (SA c/l)	707.564	691.069	690.186	696.012	704.813
PRESS RELEASE CONTRIBUTION TO BFP 01/11/2017 - 09/11/2017 (SA c/l)	619.070	602.070	623.630	633.030	621.128
UNIT OVER/(UNDER) RECOVERY (SA c/l) - 09/11/2017	(88.494)	(88.999)	(66.556)	(62.982)	(83.685)
AVERAGE BASIC FUEL PRICE 27/10/2017 - 09/11/2017	685.038	668.851	674.806	682.483	684.604
AVERAGE UNIT OVER/(UNDER) RECOVERY 27/10/2017 - 09/11/2017	(67.168)	(67.981)	(58.076)	(57.553)	(69.776)

### ANALYSIS MOVEMENT OF AVERAGE OVER/(UNDER) RECOVERY

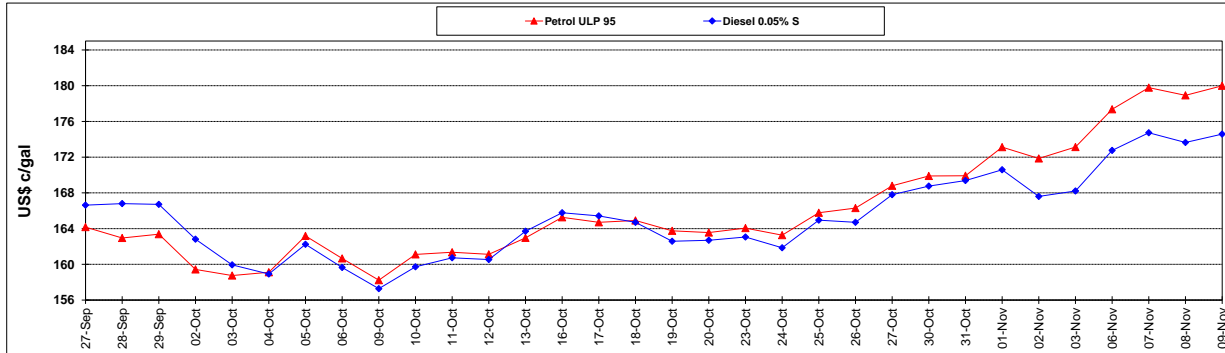
	PETROL 95	PETROL 93	DIESEL 0.05%	DIESEL 0.005%	ILL. PAR.
- MOVEMENT IN INTERNATIONAL PRODUCT PRICES	(42.239)	(43.641)	(33.519)	(32.717)	(44.863)
- MOVEMENT IN EXCHANGE RATE	(24.929)	(24.340)	(24.557)	(24.836)	(24.913)
AVERAGE UNIT OVER/(UNDER) RECOVERY 27/10/2017 - 09/11/2017	(67.168)	(67.981)	(58.076)	(57.553)	(69.776)

**R/\$ EXCHANGE RATE - (R/\$ 14.1370 - 09/11/2017)**

### EXCHANGE RATE USED IN BASIC FUEL PRICE



### INTERNATIONAL PRODUCT PRICES OF BASKET USED IN BASIC FUEL PRICE



### BASIC FUEL PRICE IN SA CENTS PER LITRE

