

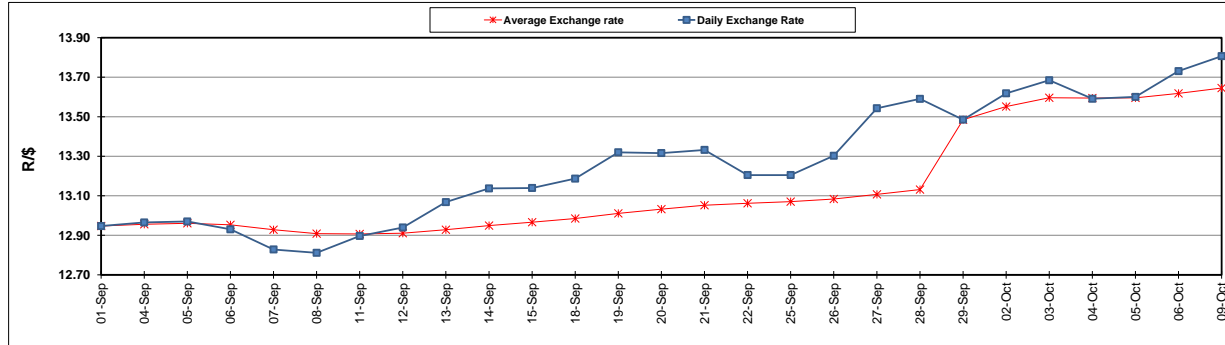
	PETROL 95 ULP	PETROL 93 ULP & LRP	DIESEL 0.05%	DIESEL 0.005%	ILL. PAR.
GAUTENG PUMP PRICE (SA c/l) AS FROM 04/10/2017	1 401.000	1 374.000	-	-	-
WHOLESALE PRICE (SA c/l) AS FROM 04/10/2017	-	-	1 212.330	1 217.730	771.088
SINGLE NATIONAL MAXIMUM RETAIL PRICE	-	-	-	-	992.000
BASIC FUEL PRICE - 09/10/2017 (SA c/l)	608.072	591.364	607.065	617.024	604.894
PRESS RELEASE CONTRIBUTION TO BFP 04/10/2017 - 09/10/2017 (SA c/l)	615.070	598.070	600.630	606.030	600.128
UNIT OVER/(UNDER) RECOVERY (SA c/l) - 09/10/2017	6.998	6.706	(6.435)	(10.994)	(4.766)
AVERAGE BASIC FUEL PRICE 29/09/2017 - 09/10/2017	608.982	592.684	613.905	623.899	611.238
AVERAGE UNIT OVER/(UNDER) RECOVERY 29/09/2017 - 09/10/2017	(6.341)	(5.328)	(31.275)	(35.869)	(27.824)

ANALYSIS MOVEMENT OF AVERAGE OVER/(UNDER) RECOVERY

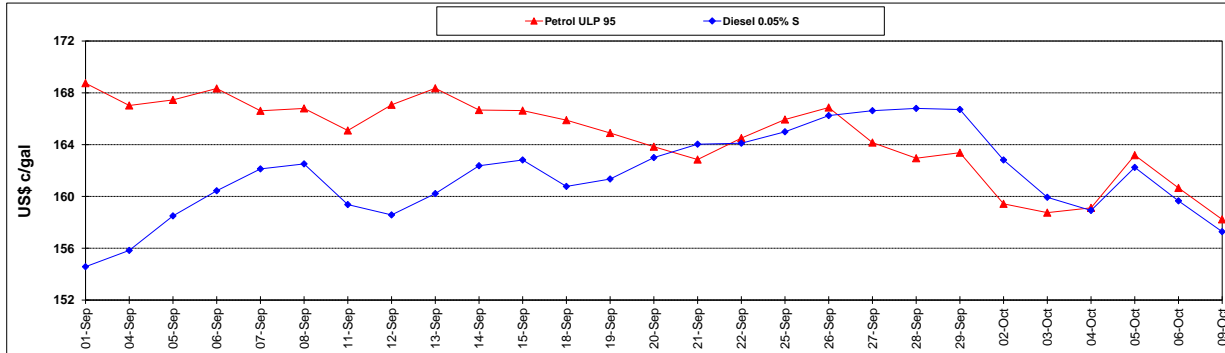
	PETROL 95	PETROL 93	DIESEL 0.05%	DIESEL 0.005%	ILL. PAR.
- MOVEMENT IN INTERNATIONAL PRODUCT PRICES	16.581	16.980	(8.168)	(12.386)	(4.817)
- MOVEMENT IN EXCHANGE RATE	(22.922)	(22.308)	(23.107)	(23.483)	(23.007)
AVERAGE UNIT OVER/(UNDER) RECOVERY 29/09/2017 - 09/10/2017	(6.341)	(5.328)	(31.275)	(35.869)	(27.824)

R/\$ EXCHANGE RATE - (R/\$ 13.8065 - 09/10/2017)

EXCHANGE RATE USED IN BASIC FUEL PRICE



INTERNATIONAL PRODUCT PRICES OF BASKET USED IN BASIC FUEL PRICE



BASIC FUEL PRICE IN SA CENTS PER LITRE

