

UPDATE OF THE BASIC FUEL PRICE

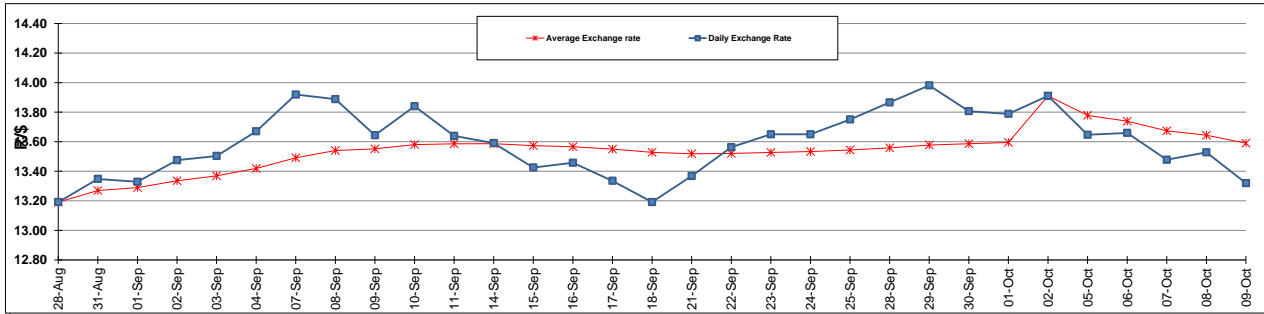
	PETROL 95 ULP	PETROL 93 ULP & LRP	DIESEL 0.05%	DIESEL 0.005%	ILL. PAR.
GAUTENG PUMP PRICE (SA c/l) AS FROM 07/10/2015	1,261.000	1,230.000	-	-	-
WHOLESALE PRICE (SA c/l) AS FROM 07/10/2015	-	-	1,093.970	1,100.370	711.828
SINGLE NATIONAL MAXIMUM RETAIL PRICE	-	-	-	-	914.000
BASIC FUEL PRICE - 09/10/2015 (SA c/l)	576.315	560.594	573.764	578.510	560.763
PRESS RELEASE CONTRIBUTION TO BFP 09/10/2015 - 09/10/2015 (SA c/l)	582.870	561.870	565.630	572.030	554.128
UNIT OVER/(UNDER) RECOVERY (SA c/l) - 09/10/2015	6.555	1.276	(8.134)	(6.480)	(6.635)
AVERAGE BASIC FUEL PRICE 02/10/2015 - 09/10/2015	587.177	570.761	572.398	577.514	562.466
AVERAGE UNIT OVER/(UNDER) RECOVERY 02/10/2015 - 09/10/2015	(6.307)	(7.891)	(33.268)	(30.984)	(33.338)

ANALYSIS MOVEMENT OF AVERAGE OVER/(UNDER) RECOVERY

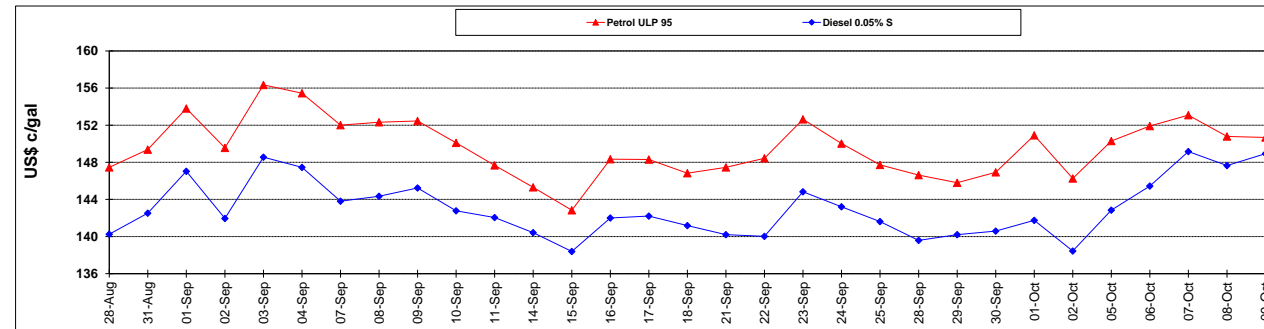
	PETROL 95	PETROL 93	DIESEL 0.05%	DIESEL 0.005%	ILL. PAR.
- MOVEMENT IN INTERNATIONAL PRODUCT PRICES	(6.501)	(8.080)	(33.458)	(31.175)	(33.524)
- MOVEMENT IN EXCHANGE RATE	0.194	0.189	0.190	0.191	0.186
AVERAGE UNIT OVER/(UNDER) RECOVERY 02/10/2015 - 09/10/2015	(6.307)	(7.891)	(33.268)	(30.984)	(33.338)

R/\$ EXCHANGE RATE - (R/\$ 13.3196 - 09/10/2015)

EXCHANGE RATE USED IN BASIC FUEL PRICE



INTERNATIONAL PRODUCT PRICES OF BASKET USED IN BASIC FUEL PRICE



BASIC FUEL PRICE IN SA CENTS PER LITRE

