

UPDATE OF THE BASIC FUEL PRICE

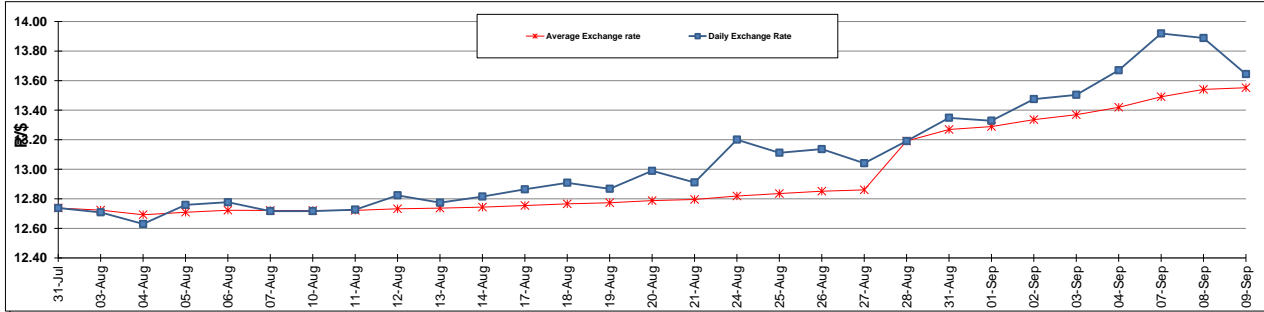
	PETROL 95 ULP	PETROL 93 ULP & LRP	DIESEL 0.05%	DIESEL 0.005%	ILL. PAR.
GAUTENG PUMP PRICE (SA c/l) AS FROM 02/09/2015	1,257.000	1,232.000	-	-	-
WHOLESALE PRICE (SA c/l) AS FROM 02/09/2015	-	-	1,040.970	1,049.370	661.828
SINGLE NATIONAL MAXIMUM RETAIL PRICE	-	-	-	-	847.000
BASIC FUEL PRICE - 09/09/2015 (SA c/l)	606.328	583.281	584.680	590.769	573.596
PRESS RELEASE CONTRIBUTION TO BFP 02/09/2015 - 09/09/2015 (SA c/l)	578.870	563.870	512.630	521.030	504.128
UNIT OVER/(UNDER) RECOVERY (SA c/l) - 09/09/2015	(27.458)	(19.411)	(72.050)	(69.739)	(69.468)
AVERAGE BASIC FUEL PRICE 28/08/2015 - 09/09/2015	600.699	577.086	578.099	585.191	566.862
AVERAGE UNIT OVER/(UNDER) RECOVERY 28/08/2015 - 09/09/2015	2.704	11.317	(47.469)	(47.161)	(44.400)

ANALYSIS MOVEMENT OF AVERAGE OVER/(UNDER) RECOVERY

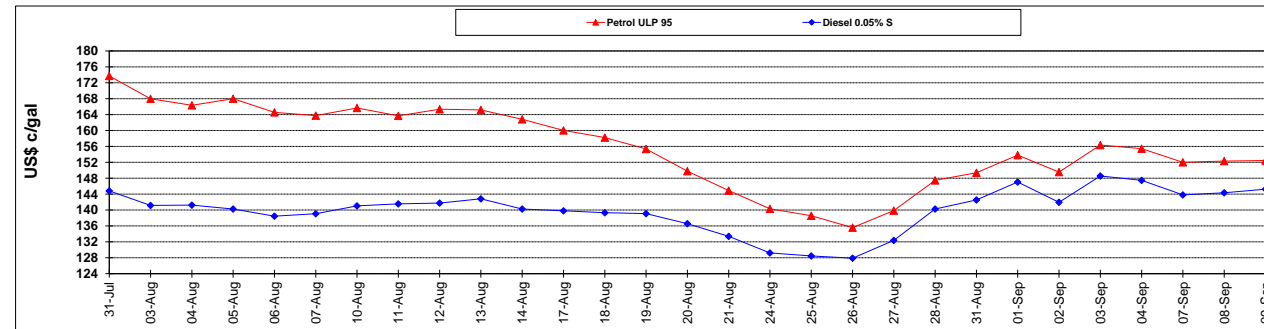
	PETROL 95	PETROL 93	DIESEL 0.05%	DIESEL 0.005%	ILL. PAR.
- MOVEMENT IN INTERNATIONAL PRODUCT PRICES	33.333	40.742	(17.992)	(17.323)	(15.497)
- MOVEMENT IN EXCHANGE RATE	(30.629)	(29.425)	(29.477)	(29.838)	(28.904)
AVERAGE UNIT OVER/(UNDER) RECOVERY 28/08/2015 - 09/09/2015	2.704	11.317	(47.469)	(47.161)	(44.400)

R/\$ EXCHANGE RATE - (R/\$ 13.6439 - 09/09/2015)

EXCHANGE RATE USED IN BASIC FUEL PRICE



INTERNATIONAL PRODUCT PRICES OF BASKET USED IN BASIC FUEL PRICE



BASIC FUEL PRICE IN SA CENTS PER LITRE

